



Property Description

Welcome to Lansdowne Place, a contemporary 2 bedroom 2 bathroom first floor apartment, constructed in 2017 and offering residents the perfect blend of comfort, convenience, and style.

Positioned within a short stroll from Taplow train station, recently integrated into the newly opened Elizabeth Line, commuting has never been more effortless. Whether you're heading into London for work or leisure, this prime location ensures seamless connectivity to various destinations.

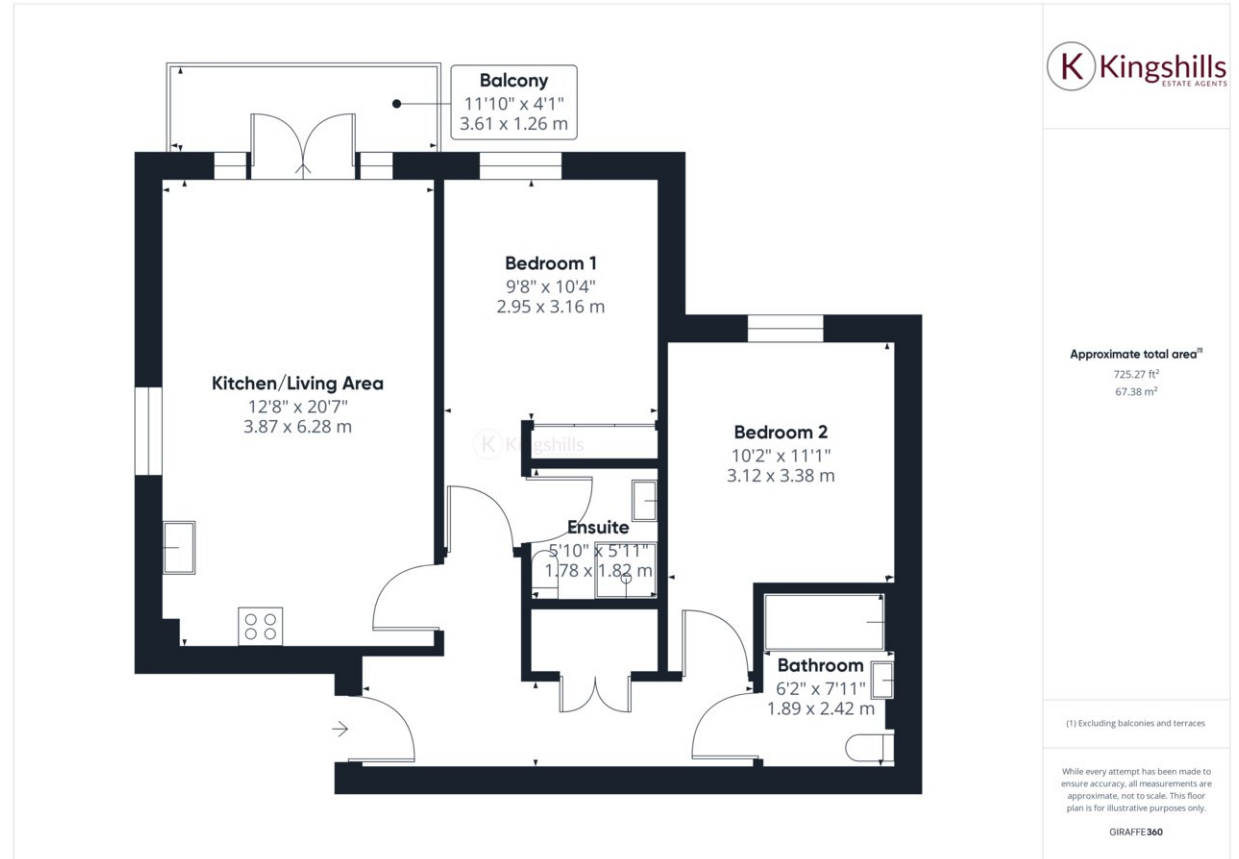
Position on the 1st floor, this immaculately maintained apartment presents an inviting entrance hall that sets the tone for the rest of the property. Upon entry, you're greeted by an open-plan living and kitchen area, where modernity meets functionality. The kitchen is equipped with sleek appliances and adorned with stone worktops.

The accommodation comprises two generously sized bedrooms, offering ample space and comfort. Bedroom 1 enjoys the luxury of an ensuite bathroom. Additionally, a well-appointed bathroom serves bedroom 2, ensuring convenience for occupants and guests alike.

Beyond the confines of the apartment, residents can relish in the well-maintained communal gardens. Furthermore, allocated parking adds to the convenience and peace of mind for residents with vehicles.

In summary, Lansdowne Place presents a rare opportunity to embrace contemporary living in a sought-after location. Whether you're a professional seeking proximity to transport links or a discerning homeowner in search of modern comforts, this property encapsulates the essence of luxurious urban living.

TENURE Leasehold



Kingshills Estate Agents
Comet Studios
Amersham
Buckinghamshire
HP7 0PX

01494 939868
hello@kingshills.co.uk
kingshills.co.uk

Agents Note: Whilst every care has been taken to prepare these particulars, they are for guidance purposes only. All measurements are for general guidance purposes only and whilst every care has been taken to ensure accuracy, they should not be relied upon and potential buyers/tenants are advised to recheck the measurements