



Flat 69, Aspen Court, Freer Crescent, High Wycombe, Buckinghamshire, HP13 7YG

Asking Price | £240,000

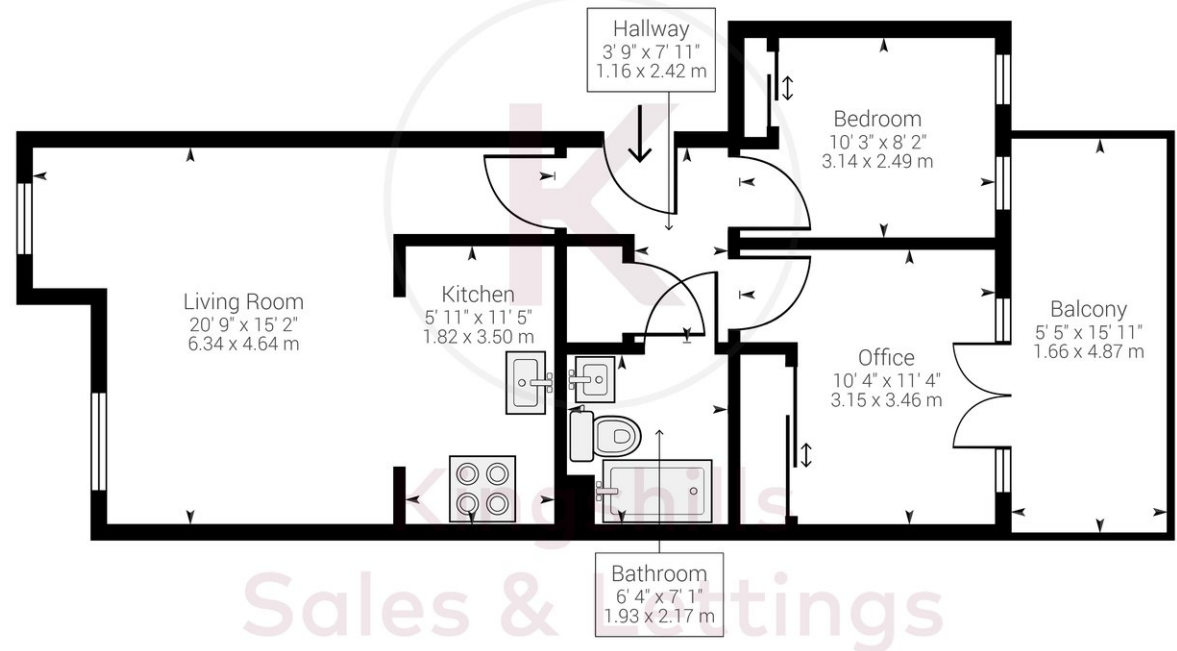
Property Description

A modern two-bedroom apartment located to the east side of High Wycombe, close to transport links and High Wycombe Town Centre.

The apartment benefits from a modern kitchen and bathroom. Internally the property offers; entrance hallway; two double bedrooms with fitted mirrored wardrobes; large balcony; bathroom; lounge with space for a dining area and kitchen with appliances. Further benefits from underfloor heating and undercover parking.

This property comes with No Onward Chain

Please note that the property is currently tenanted and the photographs shown were taken prior to this tenancy in 2021.



Approximate net internal area: 591.79 ft² (681.58 ft²) / 54.98 m² (63.32 m²)
While every attempt has been made to ensure accuracy, all measurements are approximate, not to scale. This floor plan is for illustrative purpose only and should be used as such by any prospective tenant or purchaser.

Powered by Giraffe360

Kingshills Estate Agents
Comet Studios
Amersham
Buckinghamshire
HP7 0PX

01494 939868
hello@kingshills.co.uk
kingshills.co.uk

Agents Note: Whilst every care has been taken to prepare these particulars, they are for guidance purposes only. All measurements are for general guidance purposes only and whilst every care has been taken to ensure accuracy, they should not be relied upon and potential buyers/tenants are advised to recheck the measurements