



24 Castlemoat Place Corporation Street, Taunton TA1 4BB

£115,000

robert
cooney



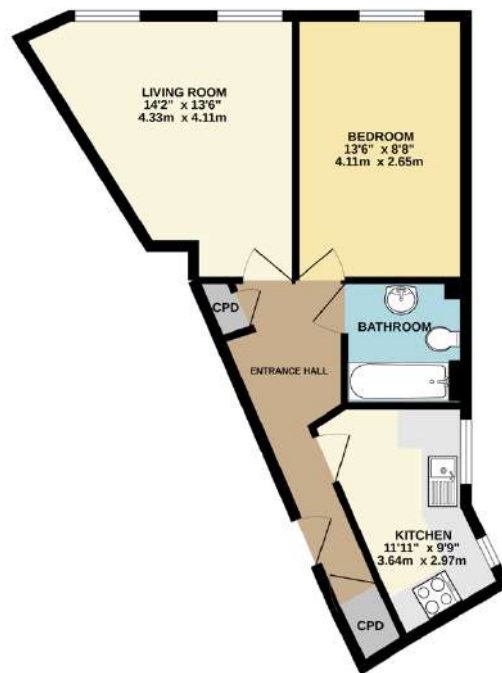
A well presented South facing 1 double bed roomed apartment situated in the original part of this popular town centre building above Bath Place, with lift to all floors and communal terrace. Ideal for investors with tenant in situ. Rent £750 pcm including utilities.



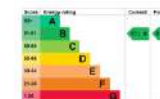
Features

- Entrance Hall
- Living Room
- Separate fitted Kitchen
- Double Bedroom
- Bathroom
- Communal roof terrace
- Lift to all floors
- Bike store
- Lease term 125 years from 2010
- Current service charge £1873.16 pa
- Current ground rent £100 pa
- No onward chain
- Council tax band A

GROUND FLOOR
438 sq.ft. (40.7 sq.m.) approx.



TOTAL FLOOR AREA: 438 sq ft (40.7 sq.m.) approx.
Whilst every attempt has been made to create the accuracy of the floorplan (outlined) line, measurements of doors, windows, rooms and other items are approximate and no responsibility is taken for any errors, omissions or misstatements. This plan is for illustrative purposes only and should be used as a guide only by prospective purchasers. The services, systems and appliances shown here are not tested and no guarantee is given as to their operability or efficiency. Can be given in accordance with the Energy Rating (2007).



Viewing strictly through the selling agents:
Robert Cooney
Corporation Street, Taunton,
Somerset TA1 4AW
Telephone 01823 230 230
E-mail taunton@robertcooney.co.uk
Website www.robertcooney.co.uk

**robert
cooney**