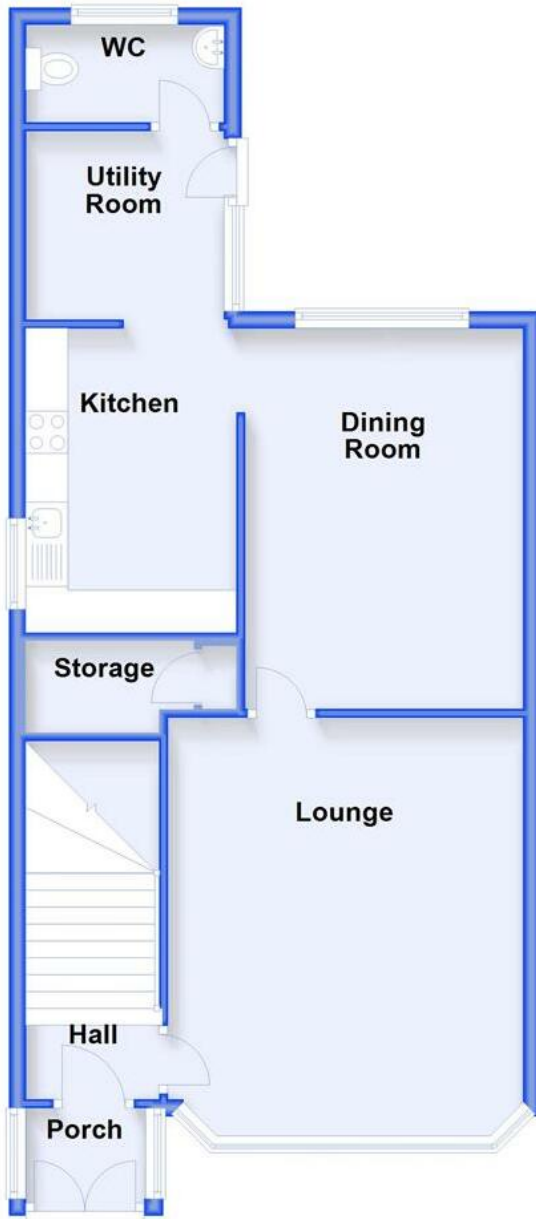


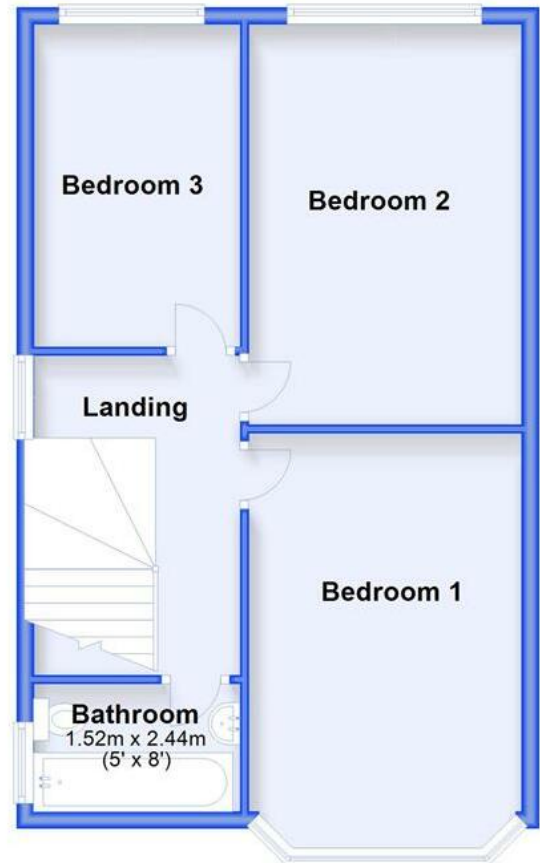
Ground Floor

Approx. 60.7 sq. metres (653.7 sq. feet)



First Floor

Approx. 55.1 sq. metres (592.9 sq. feet)



Total area: approx. 115.8 sq. metres (1246.6 sq. feet)

This plan is for illustration only and may not be representative of the property. Plan not to scale.
Plan produced using PlanUp.