



43 Wayfarers End, Longwick, Princes Risborough, Buckinghamshire, HP27 9FT

Asking Price | £460,000

Property Features

- Stylish modern house
- Surrounded by countryside and fronting onto a green
- Contemporary Kitchen/diner
- Three bedrooms with fitted wardrobes to the main bedroom
- Cloakroom and ample storage cupboards
- Modern bathroom and en-suite
- Good size living room
- Car port for 2 vehicles.
- Landscaped rear garden
- EPC 85 B / Council Tax Band E

Full Description

Situated in the idyllic village of Longwick, Buckinghamshire, this semi-detached house offers a perfect blend of modern living and rural charm. Boasting a contemporary design and built just five years ago, this property presents an ideal opportunity for those seeking a tranquil lifestyle within easy reach of urban conveniences.

Step inside to discover a spacious and inviting interior, with the ground floor comprising a bright living room, perfect for relaxation and entertainment. The adjacent kitchen/diner is a chef's delight, featuring sleek countertops, modern appliances, and ample storage for everyday living and social gatherings.

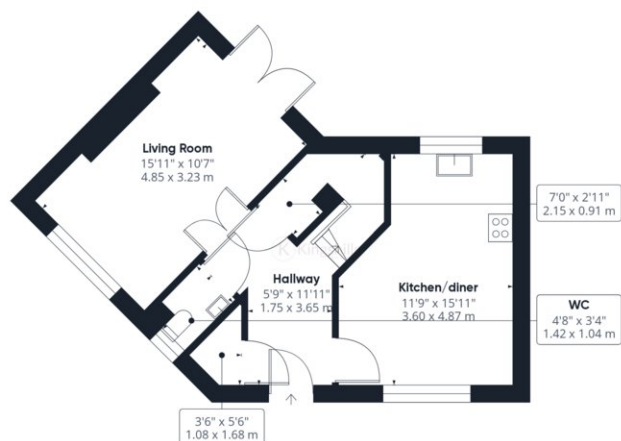
Ascending the stairs, you'll find three well-proportioned bedrooms, offering comfortable accommodation for the entire family. The main bedroom benefits from fitted wardrobes, en-suite bathroom along with additional stylish family bathroom serving the remaining bedrooms, ensuring convenience for all.

One of the standout features of this property is its outdoor spaces. As well as fronting onto a spacious green there is also a beautifully landscaped garden, offering a private retreat where you can enjoy al fresco dining, gardening, or simply to relax after a days work. The presence of a carport provides sheltered parking for two vehicles.

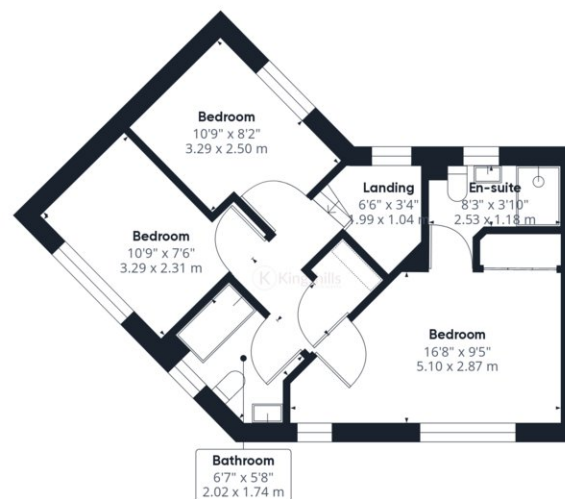
Surrounded by the scenic beauty of the Buckinghamshire countryside, residents of Longwick can enjoy a peaceful and picturesque setting while still benefiting from easy access to nearby amenities and attractions. With its modern amenities and rural charm, this semi-detached house offers an exceptional opportunity to embrace a relaxed and fulfilling lifestyle in the heart of the countryside.







Ground Floor



Floor 1

Approximate total area⁽¹⁾

917.71 ft²
85.26 m²

(1) Excluding balconies and terraces

While every attempt has been made to ensure accuracy, all measurements are approximate, not to scale. This floor plan is for illustrative purposes only.

GIRAFFE360