





## Property Features

---

- Semi Detached Family Home
- Good Order Throughout
- Potential to Extend (STPP)
- 3 Good sized Bedrooms
- Living Room, Dining Room and Conservatory
- Modern Kitchen
- Approx 100ft Rear Garden
- Carport, Garage and Outouses
- Double Glazing
- Gas Radiator Heating

## Full Description

---

Located on the west side of High Wycombe, this charming three-bedroom semi-detached home offers an excellent opportunity for families. With an abundance of potential for extension (subject to planning permission), this property is perfect for those looking to create their dream home.

Upon entering, you are welcomed by the entrance hall leading to the living room, which opens up to a delightful conservatory at the rear, providing a perfect spot to relax and enjoy views of the garden. The property also features a separate dining room complete with a fireplace. The modern kitchen is well-equipped with appliances, making it a functional and stylish space for cooking.

Upstairs, you will find three well-proportioned bedrooms (2 Double and 1 Single) and a family bathroom, all designed to cater to the needs of a growing family.

Externally, the property boasts impressive amenities. The front offers ample off-road parking for multiple vehicles, complemented by a car port and a single garage. The expansive rear garden, stretching approximately 100 feet in length, is a highlight of the property. It includes various sheds and outhouses, providing excellent storage and potential for a workshop or hobby space.

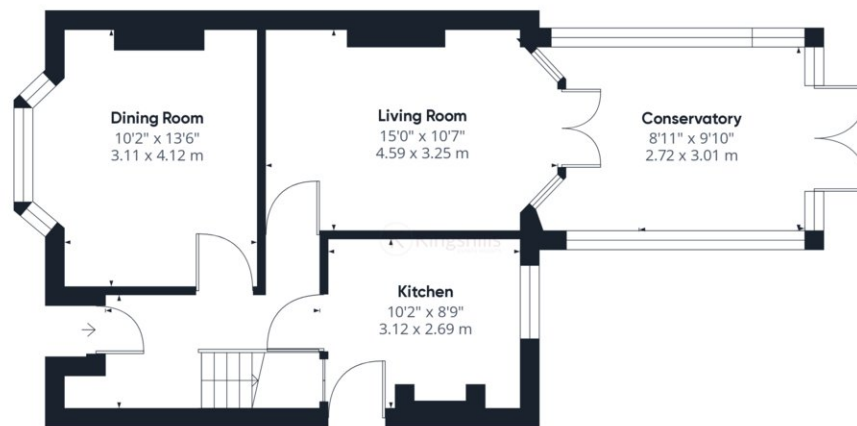
11 Mill End Road presents a fantastic opportunity to acquire a versatile home with substantial potential in a desirable location. Don't miss out on the chance to make this property your own and explore the possibilities it offers for future enhancements



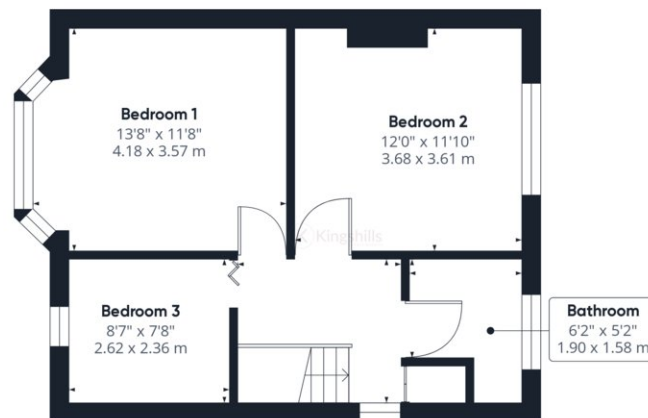








Ground Floor Building 1



Floor 1 Building 1

Approximate total area<sup>(1)</sup>

1091.01 ft<sup>2</sup>

101.36 m<sup>2</sup>

(1) Excluding balconies and terraces

While every attempt has been made to ensure accuracy, all measurements are approximate, not to scale. This floor plan is for illustrative purposes only.

GIRAFFE360