

Head Office:

1 Penn Court
Station Road
West Moors
Dorset
BH22 0JJ

Tel: 01202 877511

Email: info@dorsetparkhomes.com



DORSET PARK HOMES

Merley Court, Merley, Wimborne, Dorset



Computer generated image for identification purposes only

**Phase One of an outstanding new
Residential Park Home**

**Merley
Court**

Premier New Residential Development

Set on the outskirts of the historic town of Wimborne, this high quality **Residential Park Home** development is the proud concept of site owners Shorefields Holidays Limited, who wish to create a premier estate of bungalow style properties for the over 45's. Significant thought has gone into the design and infrastructure of this park which will eventually comprise of 99 luxury homes, all within a gated community.

A number of new homes are available for immediate occupation and potential buyers can be involved in 'bespoking' a new Park Home to their particular requirements. All plots have 'on-plot' parking for 2 cars. Some homes have far reaching views over 'greenbelt' fields and the Park Home designs will take full advantage of this special feature.

- **Full Residential Licence—essential for all year living**
- **Pet Friendly—simple conditions apply—please enquire for more information**
- **Parking—'On-Plot for 2 cars' —no commercial vehicles allowed**
- **Mains Electricity, Water & high speed fibreoptic broadband in each home. LPG Gas**
- **Council Tax Band 'A'**
- **Age Restriction 45 plus: Visitors under the age restriction can come to visit for days out & short holidays**
- **Pitch Fee £285 per month**
- **No Stamp Duty**
- **Merley Court—setting the standard for Park Home living!**

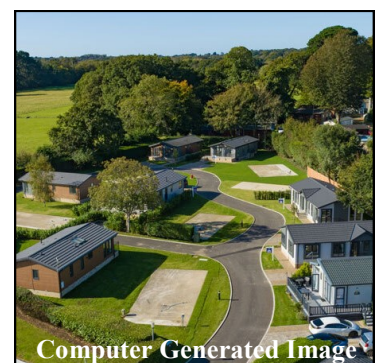
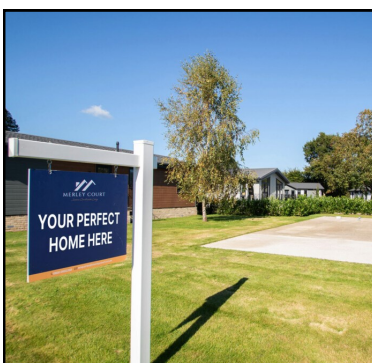
Home Exchange Scheme & Assisted Move Available

Subject to terms & conditions

A superb new Residential Park Home development, in circa 10 acres with reach of Wimborne Town Centre and easy access to the New Forest and the stunning Dorset coast making Merley Court a desirable location. All homes will be energy efficient, come with an outstanding specification, a 10 year warranty and complete with landscape plot.

Viewing by Appointment Only

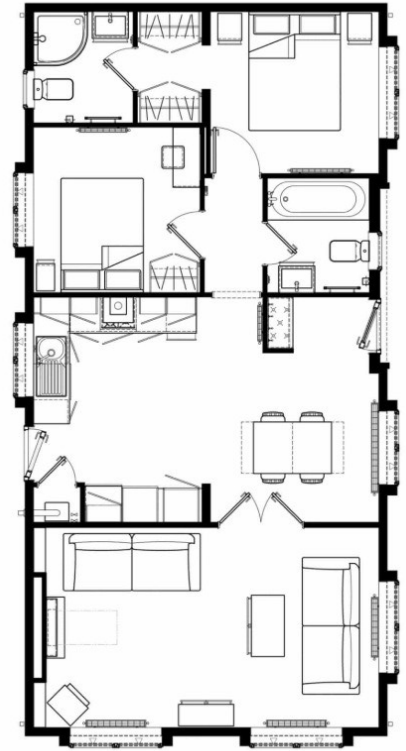
Telephone: 01202 877511





- **Superb Kitchen/Diner - including integrated appliances**
- **Large Lounge with vaulted ceiling**
- **2 Double Bedrooms**
- **En-Suite Shower Room**
- **Bathroom**
- **Gas Central Heating & Double-Glazing**
- **Parking on Plot**

Plot 35 £329,995



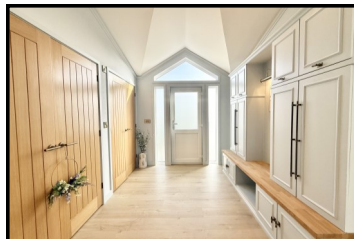
This drawing has been prepared for diagrammatic purposes only. Not to scale

Stylish Interior Designs & Fully Furnished



- **Spacious Hall with Laundry Cupboards**
- **Impressive 'Open-Plan' Living Space**
- **Superb Kitchen—Integrated appliances**
- **2 Double Bedrooms**
- **En-Suite Shower Room**
- **Luxury Bathroom**
- **Gas Central Heating & Double-Glazing**
- **Block Driveway & Large Terrace**

Price £479,995



This drawing has been prepared for diagrammatic purposes only. Not to scale

IMPORTANT NOTE: These particulars are believed to be correct but their accuracy is not guaranteed. They do not form part of any contract. Nothing in these particulars shall be deemed to be a statement that the property is in good structural condition or otherwise, nor that any of the services, appliances, equipment or facilities are in good working order or have been tested. Purchasers should satisfy themselves on such matters prior to purchase.



- **Superb Kitchen - including appliances**
- **Lounge/Dining Room, doors to Terrace**
- **2 Double Bedrooms (Bedroom 1 with walk-in wardrobe)**
- **En-Suite Shower Room**
- **Bathroom**
- **Good Position on Park**
- **Ready for immediate occupation**

Price: £299,995



This drawing has been prepared for diagrammatic purposes only. Not to scale

Stylish Interior Designs & Fully Furnished



- **Hall**
- **Spacious Lounge/Dining Room**
- **Kitchen—Integrated appliances**
- **2 Double Bedrooms**
- **En-Suite Shower Room**
- **Luxury Bathroom**
- **Gas Central Heating & Double-Glazing**
- **Block Driveway & Raised Terrace**

Plot 20: £374,995



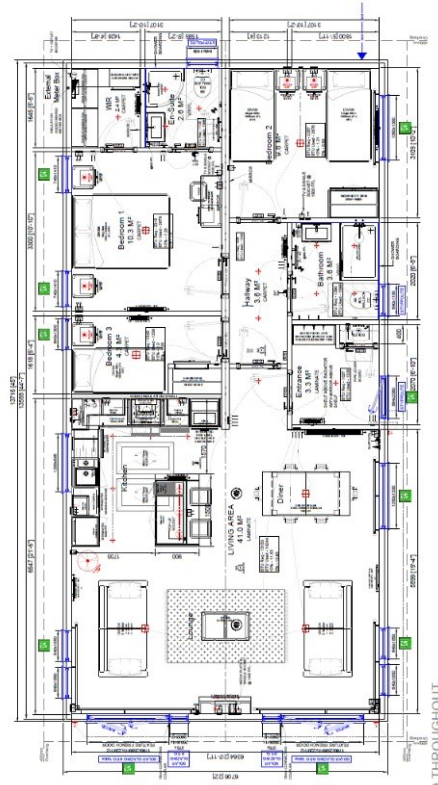
IMPORTANT NOTE: These particulars are believed to be correct but their accuracy is not guaranteed. They do not form part of any contract. Nothing in these particulars shall be deemed to be a statement that the property is in good structural condition or otherwise, nor that any of the services, appliances, equipment or facilities are in good working order or have been tested. Purchasers should satisfy themselves on such matters prior to purchase.



Plot 25 Willerby 'Acorn' 45' x 22'

- Superb 'Open-Plan' Living Space
- Stunning Kitchen with appliances
- 2 Double Bedrooms
- En-Suite Shower Room
- Bathroom
- Parking on Plot
- Ready for immediate occupation

Price: £424,995



VAULTED THROUGHOUT

This drawing has been prepared for diagrammatic purposes only. Not to scale

Stylish Interior Designs & Fully Furnished



'Merley Court'
Outstanding New Development
No Stamp Duty . Fully Furnished. Parking for 2 Cars. Low Council Tax.
HOMES READY FOR IMMEDIATE OCCUPATION!

IMPORTANT NOTE: These particulars are believed to be correct but their accuracy is not guaranteed. They do not form part of any contract. Nothing in these particulars shall be deemed to be a statement that the property is in good structural condition or otherwise, nor that any of the services, appliances, equipment or facilities are in good working order or have been tested. Purchasers should satisfy themselves on such matters prior to purchase.