

Head Office:
Dixon Kelley Estate Agents
1 Penn Court
Station Road, West Moors
Dorset. BH22 0JJ

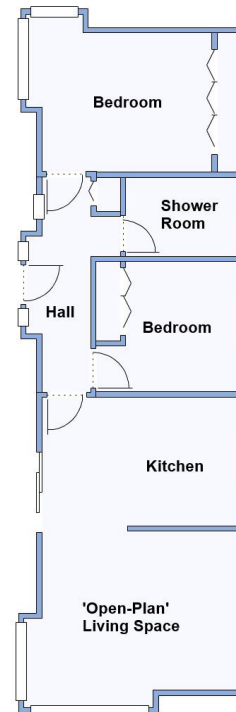
DORSET PARK HOMES

DRAFT

www.dorsetparkhomes.com

Telephone: 01202 877511

12 Cherry Blossom Drive, New Forest Glades, Hurn, Christchurch. BH23 6BY



This drawing has been prepared for diagrammatic purpose only. Not to scale.

High Quality Park Home on 'Pet Friendly' Park

2-Bedroom Park Home - approx 45' x 14'

Accommodation & approximate room dimensions:

- **Entrance Hall:** Linen cupboard.
- **'Open-Plan' Living Space:** approx 19'5" x 12'6" max. A bright space with vaulted ceiling having inset LED lighting. Tall feature window & Patio door to side terrace. Fitted kitchen with a range of floor and wall cupboards. Built-in oven, hob & hood. Integrated washing machine & fridge/freezer. Cupboard housing combination electric boiler. Water softener. Ample space for lounge & dining space. Feature fireplace.
- **Bedroom 1:** approx 10'2" x 10'2". Fitted wardrobes & corner dresser unit.
- **Bedroom 2:** approx 10'4" x 9'8". Fitted wardrobe.
- **Superb Shower Room:** Large shower cubicle with thermostatic shower. Vanity wash basin & WC.
- **Electric Central Heating & PVCu Double-Glazing**
- **Parking on Plot for 2 Cars**
- **Small Garden:** Laid lawn & patio. Metal Shed
- **Age Restriction 45+ Pets Considered**
- **Newly developed Residential Park** close to protected forestry walks and set between the popular towns of Ringwood & Christchurch

Stately Albion 'Wentwood' 2021



Price: £169,950

VIEWING STRICTLY BY APPOINTMENT WITH THE VENDOR'S AGENT Dorset Park Homes 01202 877511

IMPORTANT NOTE: These particulars are believed to be correct but their accuracy is not guaranteed. They do not form part of any contract. Nothing in these particulars shall be deemed to be a statement that the property is in good structural condition or otherwise, nor that any of the services, appliances, equipment or facilities are in good working order or have been tested. Purchasers should satisfy themselves on such matters prior to purchase. Ref.W04888

Pitch Fee: approx £283.16 pcm including Sewerage
Subject to Annual Review
Council Tax Band: 'A' Tenure: 1983 Mobile Homes Act Agreement

The recommended specialist in Park Home sales
Partner: Simon Dixon

