



Marys Mead, Hazlemere, High Wycombe, Buckinghamshire, HP15 7DY

Asking Price | £525,000

Property Features

- Extended Semi Detached Home
- Located on the Park Development
- 4 Bedrooms
- 2 Bathrooms
- Extended Dining Room
- Kitchen and Utility Room
- Approx 60 ft rear Gardens
- Off Road Parking and Garage
- NO ONWARD CHAIN
- EPC - TBC

Full Description

Located on the ever popular Park Development is this charming semi detached home that has been extended over the years to offer family accommodation and with a short distance of local and convenient amenities. Situated within the catchment area of the esteemed Cedar Park School, this residence presents an ideal opportunity for families seeking top-tier education for their children.

Boasting a thoughtful extension by the current owners, this home offers a spacious layout designed for modern living. Upon entering through the entrance porch, you are greeted by an inviting entrance hall. The ground floor features a comfortable living room, seamlessly flowing into the extended dining room, creating an ideal space for both relaxation and entertaining. The kitchen with a utility room ensures convenience and functionality.

Ascending to the first floor, you will find three generously sized bedrooms along with a family bathroom, providing ample space for family members or guests. Additionally, the converted loft accommodates another bedroom and bathroom, offering versatility and potential for various lifestyle needs.

Beyond the confines of this delightful abode lies the garden extending nearly 60ft in length. The patio area adjacent to the house offers the perfect spot for enjoying warm summer evenings with family and friends.

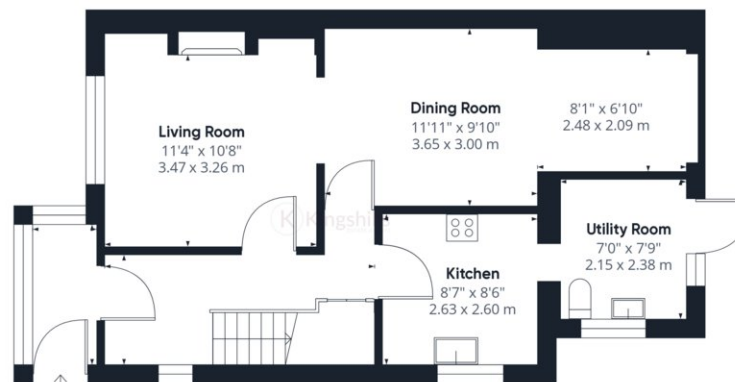
Furthermore, the property benefits from off-road parking and a shared driveway leading to the garage.

Embracing the best of both worlds, 98 Marys Mead is conveniently situated close to the open countryside, allowing residents to indulge in nature walks, outdoor pursuits, and scenic views just moments from their doorstep. Moreover, with Cedar Park School within easy reach, families can enjoy the peace of mind that comes with proximity to outstanding educational facilities.

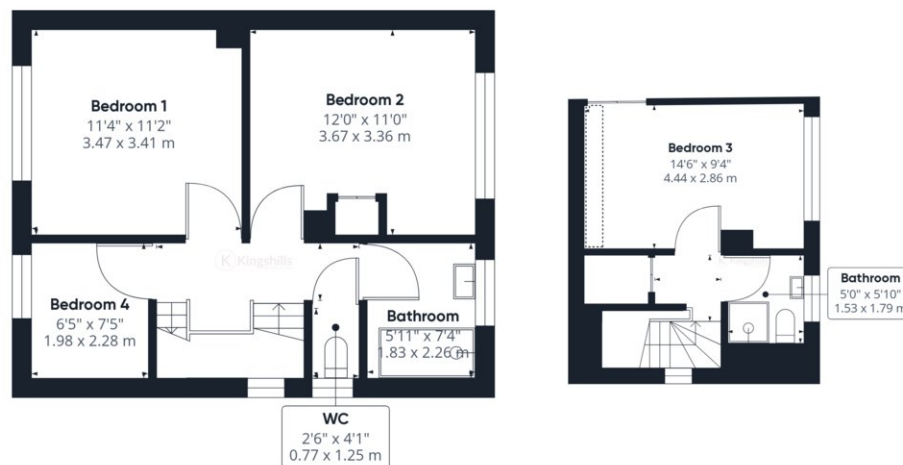
In summary, this extended property offers a harmonious blend of comfort, style, and practicality, making it the perfect place to call home for discerning buyers seeking a desirable lifestyle in Hazlemere. Schedule your viewing today and seize the opportunity to make this your own piece of paradise.







Ground Floor



Floor 1

Floor 2

Approximate total area⁽¹⁾
1210.45 ft²
112.45 m²

Reduced headroom
10.86 ft²
1.01 m²

(1) Excluding balconies and terraces

☒ Reduced headroom
(below 1.5m/4.92ft)

While every attempt has been made to ensure accuracy, all measurements are approximate, not to scale. This floor plan is for illustrative purposes only.

GIRAFFE360