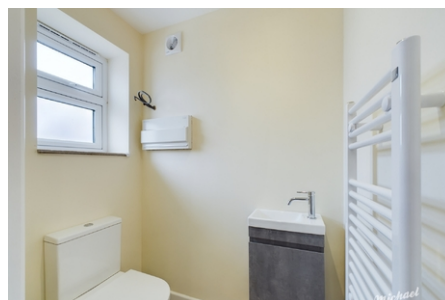


**38 Newman Close,  
Aylesbury, Buckinghamshire**

**£1,600 PCM**



Michael Anthony Aylesbury Lettings are pleased to present to the market a three bedroom semi-detached homes available to rent. The properties are situated in an exclusive cul-de-sac location comprising, entrance hallway, cloakroom WC, kitchen/diner with fitted appliances, lounge, three bedrooms and family bathroom. The properties also benefit from double glazing, solar panels, heat source pump heating, EV car charging point, block paved driveway parking for 2 vehicles and enclosed turfed rear garden with patio.



- \*\*Available Zero Deposit Guarantee\*\*
- UNFURNISHED
- NEW BUILD
- 3 BED SEMI-DETACHED
- KITCHEN
- LIVING ROOM