



20 Jeffreys Way Taunton TA1 5JJ

£425,000

robert  
cooney



A well-presented 4 double bedrooomed detached house in this ideally situated area just 2 miles to the West of the town centre and within Castle School catchment with enclosed established landscaped garden to rear, garage and driveway parking.





## Features

- Entrance Porch
- Entrance Hall
- Living Room with door to garden
- Dining Room
- Kitchen / Breakfast Room
- Utility Room with door to garden
- Cloakroom
- Master Bedroom with fitted wardrobe and vanity unit
- 3 further double bedrooms with fitted wardrobes, Bedroom 2 with vanity unit
- Bathroom
- Separate WC
  
- Larger than average enclosed landscaped garden to rear with mature apple, pear and plum trees, 2 greenhouses and shed
- Garage with door to front and full size garage door to rear
- Driveway parking
- Gas central heating
- Double glazing
  
- Council tax band F
  
- What3words: ///hedge.wished.chart

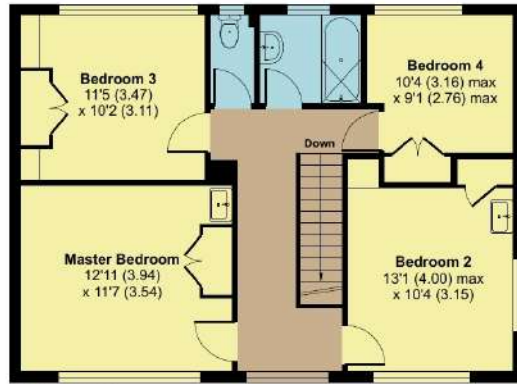
# 20 Jeffreys Way, Taunton, TA1 5JJ

Approximate Area = 1490 sq ft / 138.4 sq m

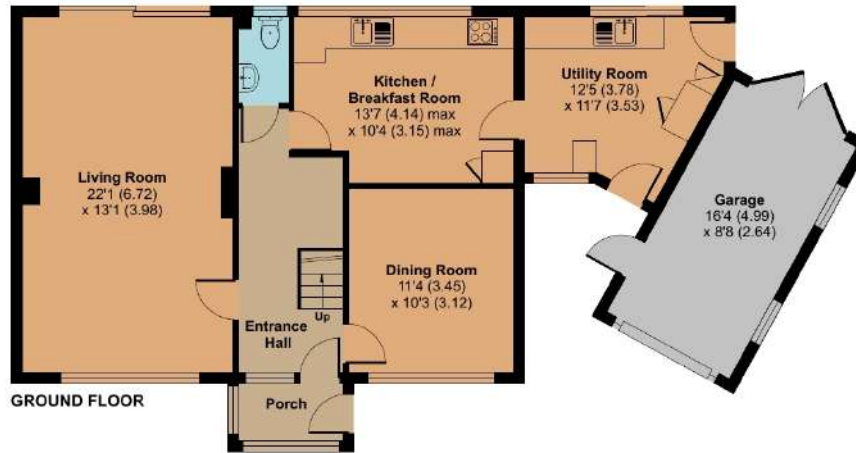
Garage = 142 sq ft / 13.1 sq m

Total = 1632 sq ft / 151.5 sq m

For identification only - Not to scale



FIRST FLOOR



GROUND FLOOR



Viewing strictly through the selling agents:

**Robert Cooney**

Corporation Street, Taunton,  
Somerset TA1 4AW

Telephone 01823 230 230

E-mail [taunton@robertcooney.co.uk](mailto:taunton@robertcooney.co.uk)

Website [www.robertcooney.co.uk](http://www.robertcooney.co.uk)



Floor plan produced in accordance with RICS Property Measurement Standards incorporating International Property Measurement Standards (IPMS2 Residential). © ricscom 2024. Produced for Robert Cooney. REF: 1180116



For clarification, we wish to inform prospective purchasers that: these particulars are set out as a general outline only for the guidance of intended purchasers, and do not constitute, nor constitute part of, an offer or contract; all descriptions, dimensions, references to condition and necessary permission for use and occupation, and other details, are given without responsibility and any intending purchasers should not rely on them as statements or representation of fact, but must satisfy themselves by inspection or otherwise as to the correctness of each of them; no person in the employment of Robert Cooney has any authority to make or give any representation or warranty whatever in relation to this property; we have not carried out a detailed survey nor tested the services, appliances and specific fittings.

**robert  
cooney**