



WESTWOOD
HOUSE
CHELSEA

<https://qinvestments.eu/>



WELCOME TO WESTWOOD HOUSE.

THIS IS THE LAST ADDITION TO
CHELSEA CREEK, ONE OF LONDON'S
MOST EXCLUSIVE NEIGHBOURHOODS,
JUST MOMENTS FROM THE KING'S ROAD
AND THE RIVER THAMES. WESTWOOD
HOUSE OFFERS BEAUTIFULLY DESIGNED
HOMES SET WITHIN AN ESTABLISHED
TRANQUIL WATERSIDE SETTING.



HYDE PARK

SLOANE SQUARE

CHELSEA BRIDGE

THE IMPERIAL

CHELSEA CREEK

BATTERSEA PARK

IMPERIAL WHARF STATION

HARRODS

KING'S ROAD

DUKE OF YORK SQUARE

THE CITY

WESTWOOD HOUSE

CANARY WHARF

CHELSEA HARBOUR

RIVER THAMES

WELCOME TO
WESTWOOD HOUSE

Bright, contemporary apartments that overlook restful canal waterways and tree-lined promenades offer a refreshingly unique urban lifestyle.



CGI is indicative only

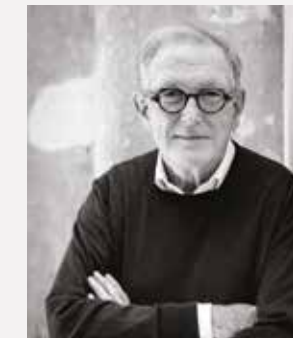
THE VISION

Chelsea Creek brings a characteristically European style of waterside living to central London. Award-winning architectural practice Squire and Partners looked to the waterways of Amsterdam and Copenhagen for inspiration.



BEAUTIFULLY LANDSCAPED **WATERWAYS**

Located a short distance from the famous annual Chelsea Flower Show, the gardens of Chelsea Creek have been exquisitely landscaped to mirror their aesthetic, with a focus on form, texture and colour. The planting has been thoughtfully considered to ensure that every season explodes with blooms and beauty. Peaceful pockets of green create space for calm contemplation, showcasing the priority for wellbeing and environmental quality that flows throughout Chelsea Creek.



MICHAEL SQUIRE
ARCHITECT

Our vision for Chelsea Creek was to bring a characteristically European feel of waterside living to London and we looked to Amsterdam and Copenhagen to inform the design. We replaced the traditional English garden with waterways and tree-lined promenades. It is a place of great character and charm.

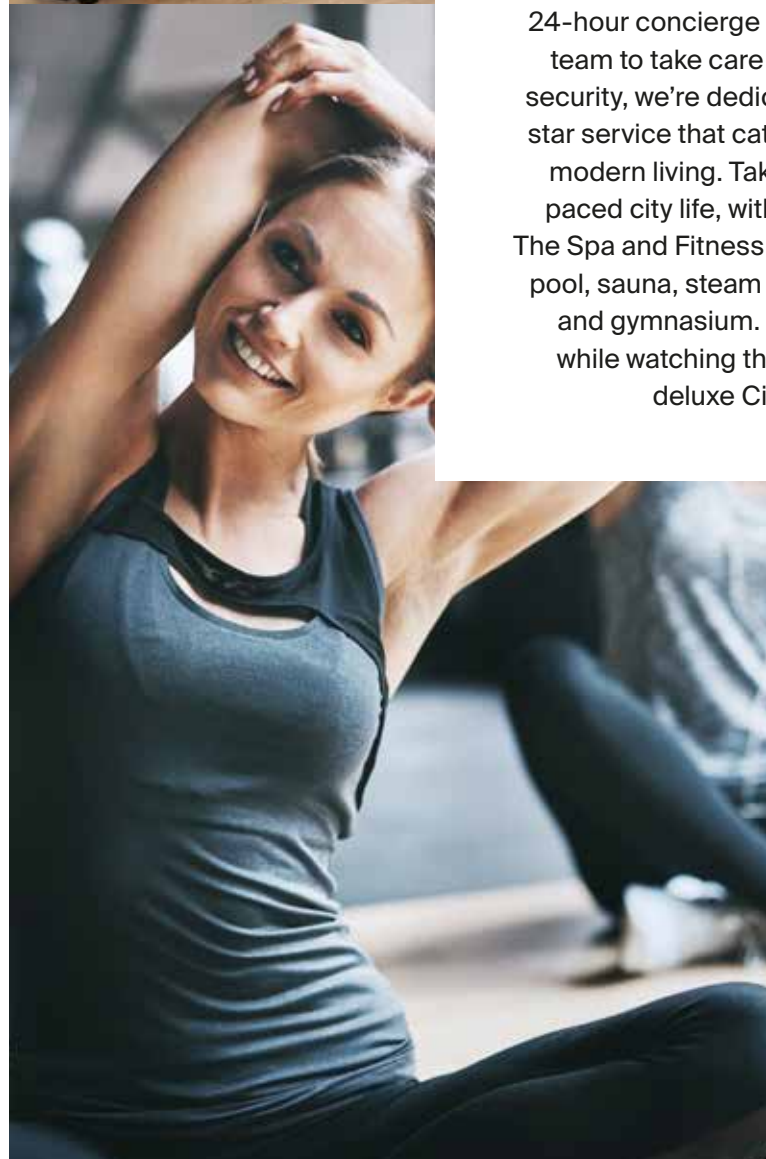


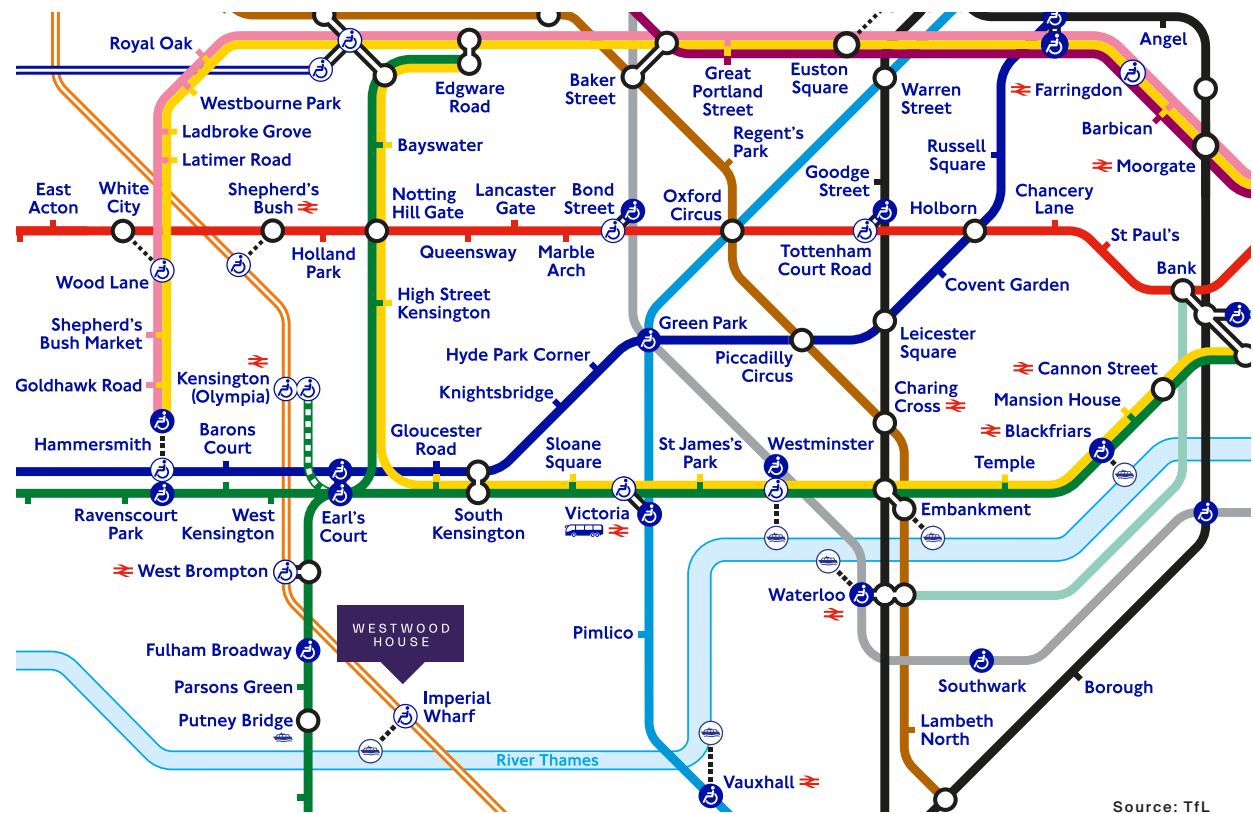
A serene waterside setting linking the River Thames from Imperial Wharf through to the neighbouring King's Road Park – a development by St William, a part of the Berkeley Group.





Chelsea Creek boasts luxury wellness amenities and concierge services onsite, to cater to your every lifestyle need. With a 24-hour concierge service and an on-site team to take care of management and security, we're dedicated to providing five-star service that caters to every nuance of modern living. Take time out from fast-paced city life, with exclusive access to The Spa and Fitness centre - with swimming pool, sauna, steam room, treatment room and gymnasium. Or relax and unwind while watching the latest movie in the deluxe Cinema room.





WALKING



DRIVING



PUBLIC TRANSPORT*



Imperial Wharf	4 Mins	Sloane Square	10 Mins	West Brompton	3 Mins
Chelsea Harbour	5 Mins	Chelsea & Westminster Hospital	10 Mins	Clapham Junction	5 Mins
King's Road	8 Mins	Knightsbridge	12 Mins	Kensington (Olympia)	6 Mins
Fulham Broadway	14 Mins	Westfield	14 Mins	Shepherd's Bush	8 Mins
Hurlingham Club	23 Mins	Hyde Park	16 Mins	Victoria	21 Mins
Battersea Park	35 Mins	Park Lane	16 Mins	High Street Kensington	23 Mins
South Kensington	41 Mins	Oxford Street	20 Mins	Bond Street	24 Mins
Saatchi Gallery	42 Mins	King's Cross	30 Mins	Oxford Circus	25 Mins
Sloane Square	46 Mins	Heathrow Airport	35 Mins	Imperial College	28 Mins
Design Museum	48 Mins	Gatwick Airport	45 Mins	Gatwick Airport	42 Mins
		London City Airport	60 Mins	Heathrow Airport	54 Mins
		Luton Airport	1 Hr 15 Mins		
		Stansted Airport	1 Hr 30 Mins		

LONDON HELIPORT



RIVER TAXI



CYCLING

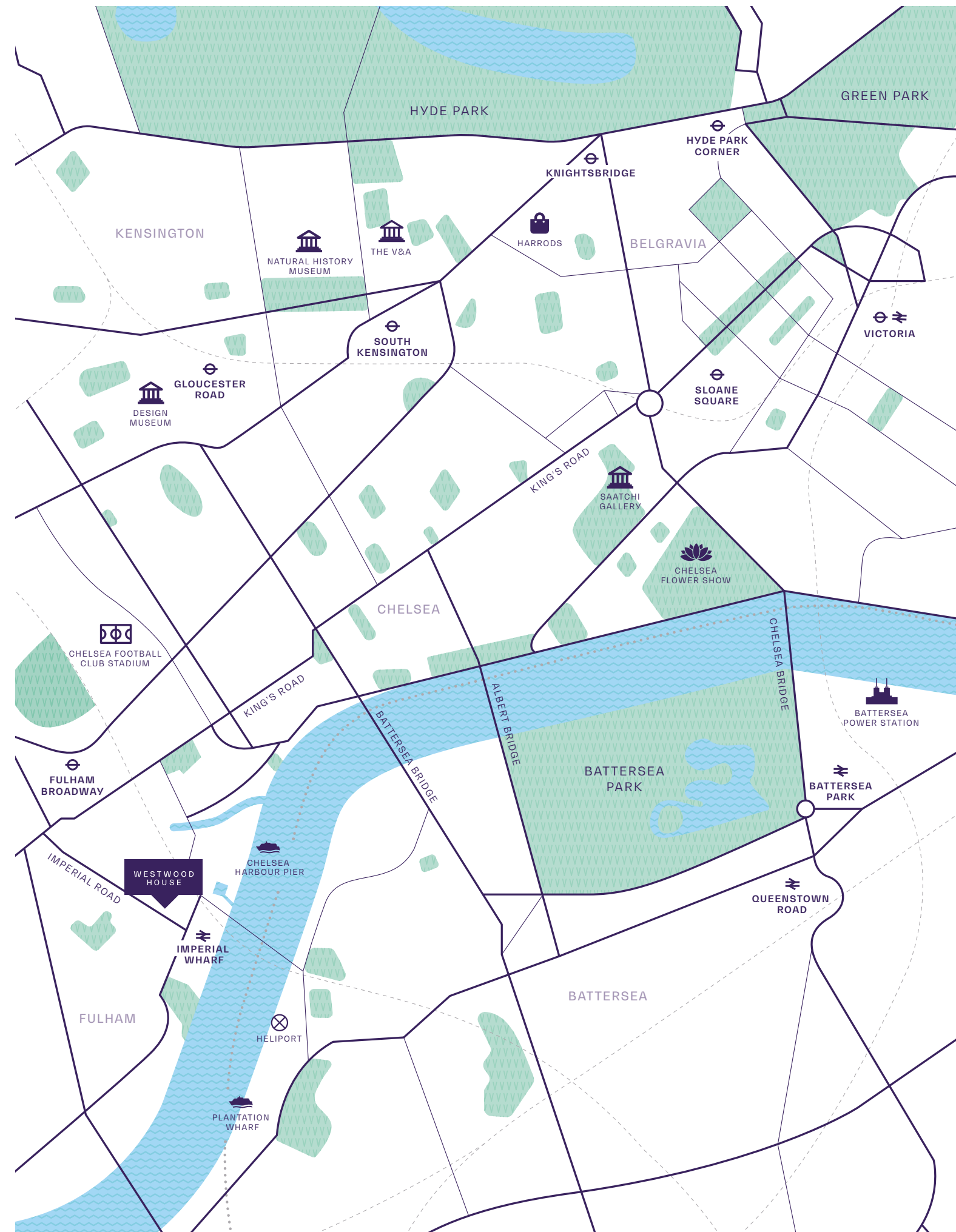


Located within easy reach, London Heliport is open daily from 7am until 10.30pm. Extended operating hours are available by prior appointment.

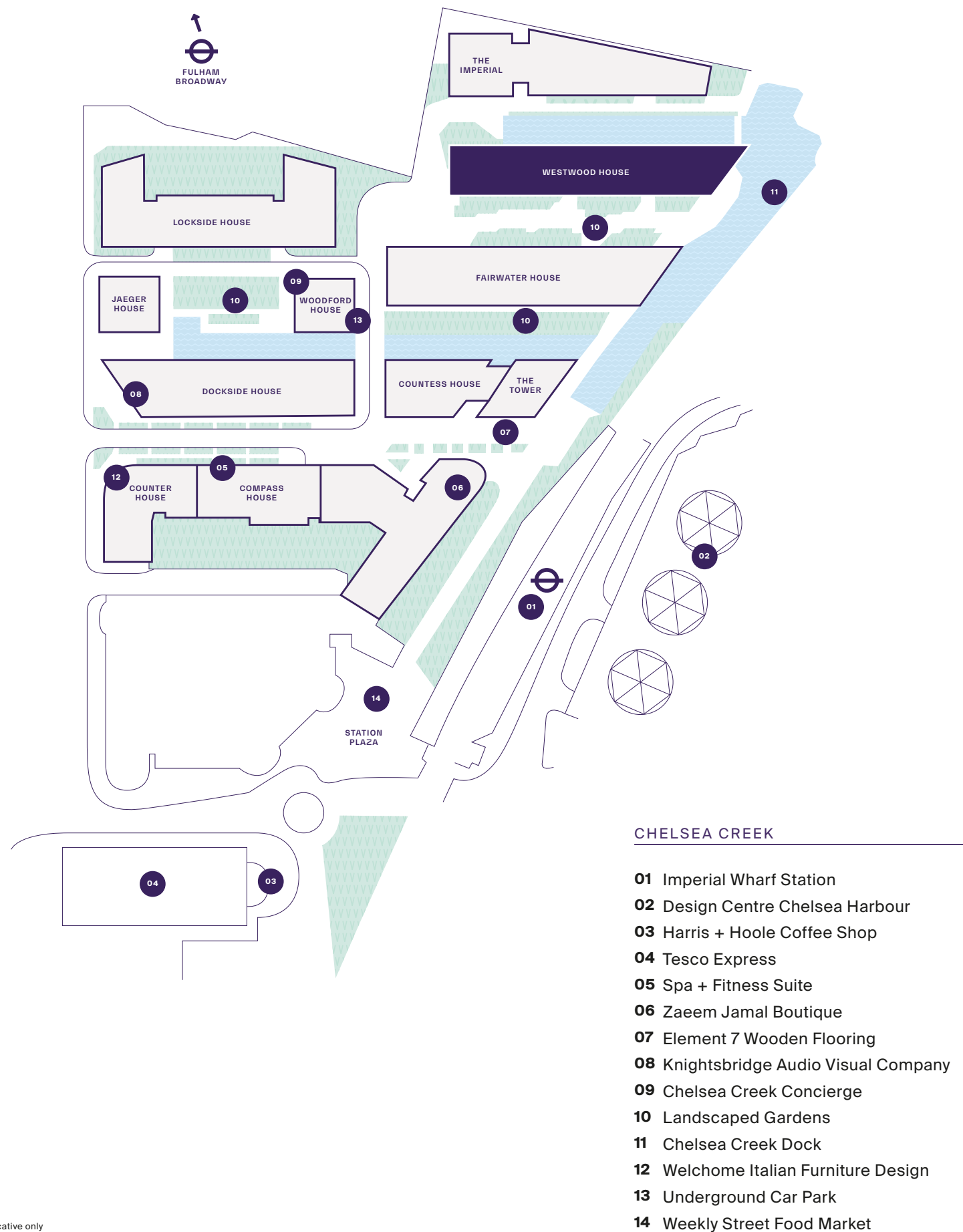
Fast, frequent and exhilarating, the river taxi is a popular choice for hopping to and from Chelsea Harbour, from right outside Imperial Wharf to Blackfriars, Putney and other favourite spots. The service runs Monday to Friday from 6.30am.

Fulham Broadway	3 Mins
Parsons Green	4 Mins
South Kensington	10 Mins
Sloane Square	12 Mins
Harrods	12 Mins
Hyde Park	17 Mins
White City	21 Mins
Oxford Circus	25 Mins

*Journey times are approximate only and measured by fastest route source: tfl.gov.uk fastest route



Maps are not to scale and show approximate locations only



Site plan is indicative only

THE COLLECTIONS

THE CLARIDGE'S AND THE SAVOY COLLECTIONS ARE TWO CAREFULLY CURATED PALETTES PROVIDING ENVIABLE LUXURY INTERIORS TO CHOOSE FROM. BOTH COLLECTIONS HAVE A MODERN NEOCLASSICAL DESIGN INSPIRED BY THE ART DECO ERA.

THE CLARIDGE'S COLLECTION
MODERN, BOLD AND ELEGANT



Computer generated image, indicative only.

KITCHEN

Elegant green and light grey cabinetry created in a shaker-style neatly surrounds the high-specification integrated appliances whilst composite worktops and frosted-glass backsplash combine to provide a stylish yet functional kitchen space.



Interior photography of the showhome bathroom. Lifestyle images are indicative only.

BATHROOM

Dramatic deep blue wall tiles contrasted with white hexagonal floor tiles bring an ambience to this sultry and sleek bathroom. Finished with feature wall lights and stylish brass fittings, this creates a contemporary, soft and soothing atmosphere.

THE SAVOY COLLECTION

CLASSIC-CONTEMPORARY AND SUBTLY CONFIDENT



Interior photography of the showhome kitchen. Lifestyle images are indicative only.

KITCHEN

Bronze and light grey modern shaker-style doors accentuated sympathetically with bronzed ironmongery combine with light composite stone worktops to provide a warm and chic aesthetic.



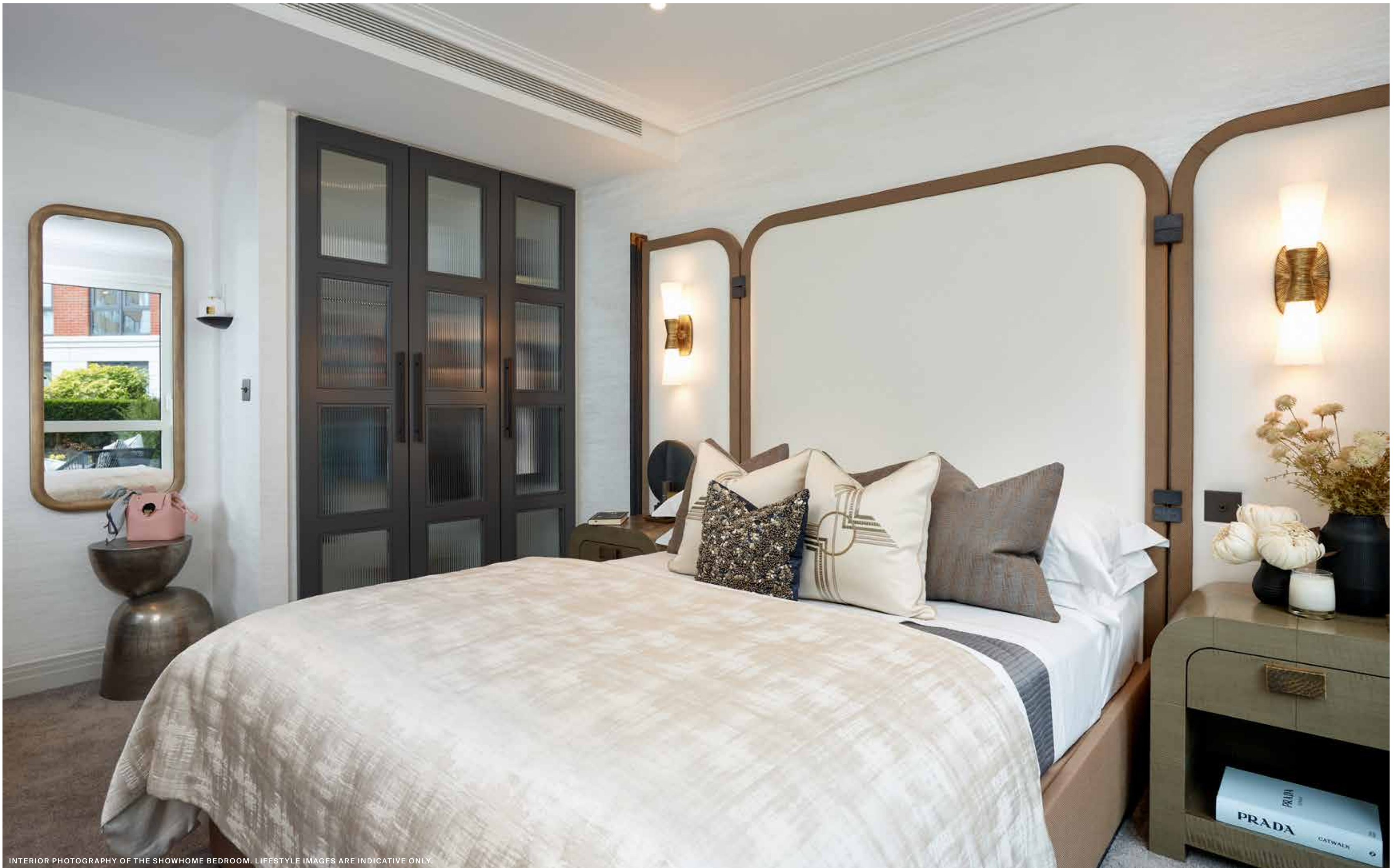
Computer generated image, indicative only.

BATHROOM

3D-textured wall tiles sit naturally amongst brass accents and art deco style wall lights. The marble-effect porcelain tiles juxtaposed against black hexagonal floor tiles exude elegance and sophistication providing a serene and calming atmosphere.



INTERIOR PHOTOGRAPHY OF THE SHOWHOME LIVING ROOM. LIFESTYLE IMAGES ARE INDICATIVE ONLY.

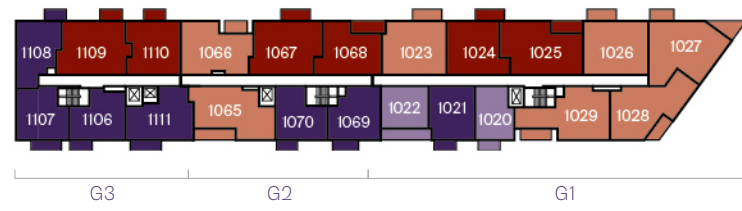


INTERIOR PHOTOGRAPHY OF THE SHOWHOME BEDROOM. LIFESTYLE IMAGES ARE INDICATIVE ONLY.

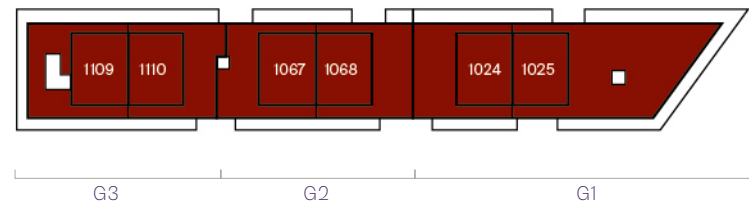
NORTH



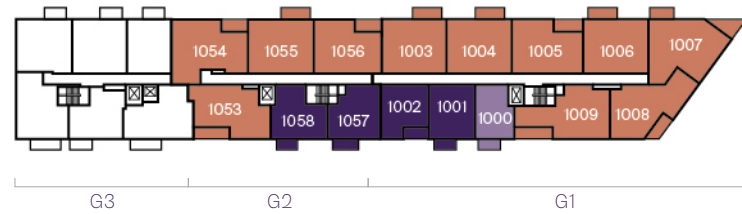
ACCOMMODATION FINDER



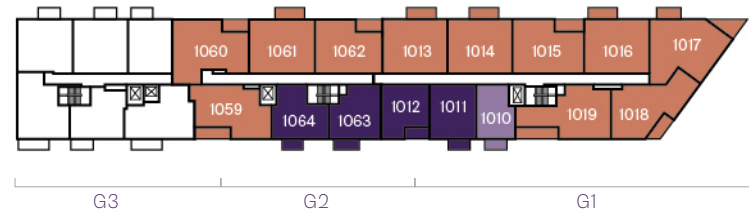
SIXTH FLOOR



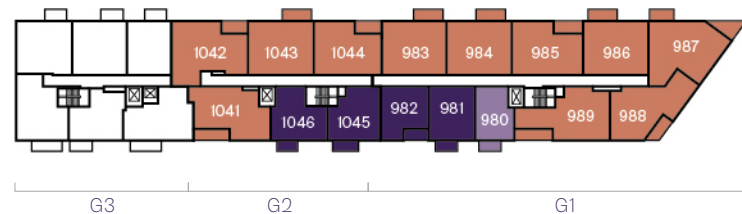
SEVENTH FLOOR



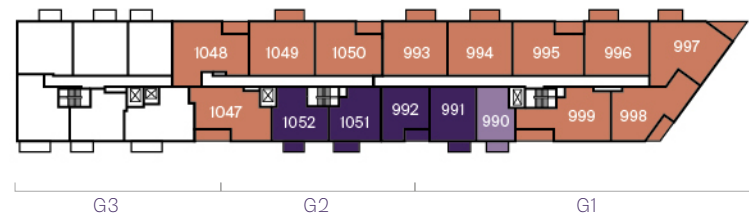
FOURTH FLOOR



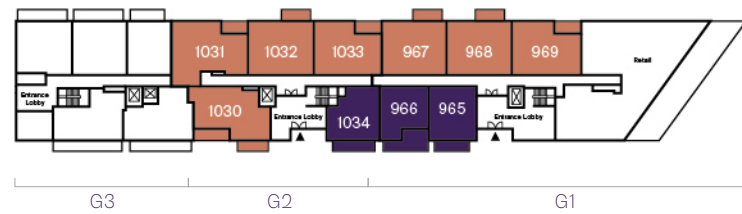
FIFTH FLOOR



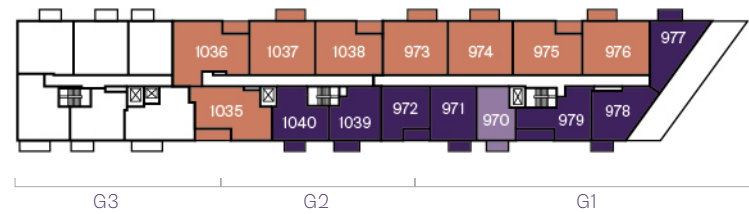
SECOND FLOOR



THIRD FLOOR



GROUND FLOOR



FIRST FLOOR

KEY

- MANHATTAN APARTMENTS
- 1 BEDROOM APARTMENTS
- 2 BEDROOM APARTMENTS
- 3 BEDROOM APARTMENTS

Floor plans shown for Westwood House are approximate measurements and areas only. Exact layout, sizes, measurements and areas may vary within a tolerance of 5%. The net sales area is based on the RICS standard method of measurement and is the internal area of the home including internal columns and service boxing. The dimensions and areas are not intended to be used for carpet sizes, appliance sizes or items of furniture. Furniture and kitchen layouts are indicative only. Colours are indicative only and may vary depending on the customer palette selection. Electrical positions shown are indicative only. Views are indicative only.

APT NO.	LEVEL	BEDROOMS	PAGE NO.	APT NO.	LEVEL	BEDROOMS	PAGE NO.
965	00	1 Bedroom	30	1021	06	1 Bedroom	43
966	00	1 Bedroom	29	1022	06	Manhattan	28
967	00	2 Bedrooms	53	1023	06	2 Bedrooms	71
968	00	2 Bedrooms	50	1024	06	3 Bedrooms	90
969	00	2 Bedrooms	49	1025	06	3 Bedrooms	96
970	01	Manhattan	26	1026	06	2 Bedrooms	72
971	01	1 Bedroom	35	1027	06	2 Bedrooms	66
972	01	1 Bedroom	32	1028	06	2 Bedrooms	62
973	01	2 Bedrooms	59	1029	06	2 Bedrooms	73
974	01	2 Bedrooms	56	1030	00	2 Bedrooms	51
975	01	2 Bedrooms	49	1031	00	2 Bedrooms	54
976	01	2 Bedrooms	55	1032	00	2 Bedrooms	52
977	01	1 Bedroom	33	1033	00	2 Bedrooms	48
978	01	1 Bedroom	37	1034	00	1 Bedroom	31
979	01	1 Bedroom	44	1035	01	2 Bedrooms	58
980	02	Manhattan	27	1036	01	2 Bedrooms	60
981	02	1 Bedroom	39	1037	01	2 Bedrooms	57
982	02	1 Bedroom	32	1038	01	2 Bedrooms	48
983	02	2 Bedrooms	53	1039	01	1 Bedroom	36
984	02	2 Bedrooms	50	1040	01	1 Bedroom	34
985	02	2 Bedrooms	49	1041	02	2 Bedrooms	61
986	02	2 Bedrooms	55	1042	02	2 Bedrooms	54
987	02	2 Bedrooms	64	1043	02	2 Bedrooms	52
988	02	2 Bedrooms	62	1044	02	2 Bedrooms	48
989	02	2 Bedrooms	63	1045	02	1 Bedroom	36
990	03	Manhattan	26	1046	02	1 Bedroom	38
991	03	1 Bedroom	35	1047	03	2 Bedrooms	58
992	03	1 Bedroom	32	1048	03	2 Bedrooms	60
993	03	2 Bedrooms	59	1049	03	2 Bedrooms	57
994	03	2 Bedrooms	56	1050	03	2 Bedrooms	48
995	03	2 Bedrooms	49	1051	03	1 Bedroom	36
996	03	2 Bedrooms	55	1052	03	1 Bedroom	34
997	03	2 Bedrooms	65	1053	04	2 Bedrooms	61
998	03	2 Bedrooms	62	1054	04	2 Bedrooms	54
999	03	2 Bedrooms	63	1055	04	2 Bedrooms	52
1000	04	Manhattan	27	1056	04	2 Bedrooms	48
1001	04	1 Bedroom	39	1057	04	1 Bedroom	36
1002	04	1 Bedroom	32	1058	04	1 Bedroom	38
1003	04	2 Bedrooms	53	1059	05	2 Bedrooms	58
1004	04	2 Bedrooms	50	1060	05	2 Bedrooms	69
1005	04	2 Bedrooms	49	1061	05	2 Bedrooms	67
1006	04	2 Bedrooms	55	1062	05	2 Bedrooms	48
1007	04	2 Bedrooms	66	1063	05	1 Bedroom	36
1008	04	2 Bedrooms	62	1064	05	1 Bedroom	34
1009	04	2 Bedrooms	63	1065	06	2 Bedrooms	74
1010	05	Manhattan	26	1066	06	2 Bedrooms	70
1011	05	1 Bedroom	35	1067	06	3 Bedrooms	94
1012	05	1 Bedroom	32	1068	06	3 Bedrooms	86
1013	05	2 Bedrooms	59	1069	06	1 Bedroom	41
1014	05	2 Bedrooms	56	1070	06	1 Bedroom	42
1015	05	2 Bedrooms	49	1106	06	1 Bedroom	46
1016	05	2 Bedrooms	55	1107	06	1 Bedroom	45
1017	05	2 Bedrooms	65	1108	06	1 Bedroom	40
1018	05	2 Bedrooms	62	1109	06	3 Bedrooms	92
1019	05	2 Bedrooms	68	1110	06	3 Bedrooms	88
1020	06	Manhattan	27	1111	06	1 Bedroom	47

MANHATTAN APARTMENT

FIRST, THIRD AND FIFTH FLOORS
APARTMENTS 970, 990 & 1010

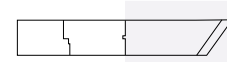


View towards
landscaped boulevard

NORTH

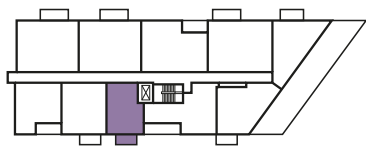


BLOCK G



G1 - FIRST FLOOR

ELEVATION
SOUTH EAST



TOTAL INTERNAL AREA	43.88 SQ M	472 SQ FT
LIVING / DINING	3.15M X 3.20M	10' 4" X 10' 6"
KITCHEN	2.55M X 2.60M	8' 4" X 8' 6"
BEDROOM	2.50M X 4.19M	8' 2" X 13' 9"
BALCONY	5.12 SQ M	55 SQ FT

Washing machine
 Integrated fridge freezer
 4 ring hob
 C Cupboard
 U Utility room
 TV
 PS Privacy screen

Floor plans shown for Westwood House are approximate measurements only and are not to scale. Plot Locators and Elevations shown are not to scale. Exact layout and size may vary. All measurements may vary within a tolerance of 5%. The dimensions are not intended to be used for carpet sizes, appliance sizes or items of furniture. Floor plans not to scale and may vary from page to page.

MANHATTAN APARTMENT

SECOND, FOURTH AND SIXTH FLOORS
APARTMENTS 980, 1000 & 1020

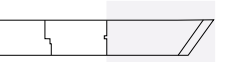


View towards
landscaped boulevard

NORTH

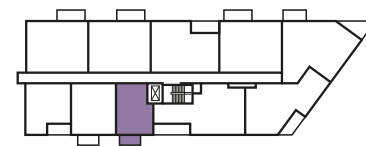


BLOCK G



G1 - SECOND FLOOR

ELEVATION
SOUTH EAST



TOTAL INTERNAL AREA	43.88 SQ M	472 SQ FT
LIVING / DINING	3.15M X 3.20M	10' 4" X 10' 6"
KITCHEN	2.55M X 2.60M	8' 4" X 8' 6"
BEDROOM	2.50M X 4.19M	8' 2" X 13' 9"
BALCONY	5.12 SQ M	55 SQ FT

Washing machine
 Integrated fridge freezer
 4 ring hob
 C Cupboard
 U Utility room
 TV
 PS Privacy screen

Floor plans shown for Westwood House are approximate measurements only and are not to scale. Plot Locators and Elevations shown are not to scale. Exact layout and size may vary. All measurements may vary within a tolerance of 5%. The dimensions are not intended to be used for carpet sizes, appliance sizes or items of furniture. Floor plans not to scale and may vary from page to page.

MANHATTAN APARTMENT

SIXTH FLOOR
APARTMENT 1022



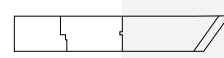
NORTH



View towards
landscaped boulevard

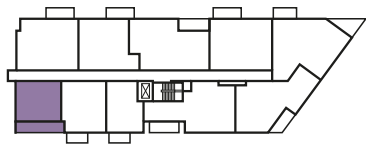


BLOCK G



G1 - SIXTH FLOOR

ELEVATION
SOUTH EAST



TOTAL INTERNAL AREA	45.21 SQ M	487 SQ FT
LIVING / DINING	4.25M X 3.88M	13' 11" X 12' 9"
KITCHEN	2.15M X 2.45M	7' 1" X 8' 1"
BEDROOM	2.75M X 3.53M	9' 0" X 11' 7"
BALCONY	12.86 SQ M	138 SQ FT

Washing machine
 Integrated fridge freezer
 4 ring hob
 Cupboard
 Utility room
 TV
 Privacy screen

Floor plans shown for Westwood House are approximate measurements only and are not to scale. Plot Locators and Elevations shown are not to scale. Exact layout and size may vary. All measurements may vary within a tolerance of 5%. The dimensions are not intended to be used for carpet sizes, appliance sizes or items of furniture. Floor plans not to scale and may vary from page to page.

1 BEDROOM APARTMENT

GROUND FLOOR
APARTMENT 966



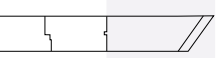
NORTH



View towards
landscaped boulevard

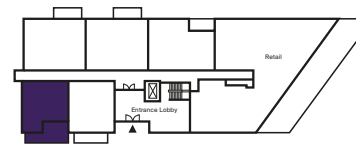


BLOCK G



G1 - GROUND FLOOR

ELEVATION
SOUTH EAST



TOTAL INTERNAL AREA	51 SQ M	549 SQ FT
LIVING / DINING	3.68M X 4.24M	12' 1" X 13' 11"
KITCHEN	3.50M X 2.06M	11' 6" X 6' 9"
BEDROOM	3.37 X 3.41M	11' 1" X 11' 2"
BALCONY	15.72 SQ M	169 SQ FT

Washing machine
 Integrated fridge freezer
 4 ring hob
 Cupboard
 Utility room
 TV
 Privacy screen

Floor plans shown for Westwood House are approximate measurements only and are not to scale. Plot Locators and Elevations shown are not to scale. Exact layout and size may vary. All measurements may vary within a tolerance of 5%. The dimensions are not intended to be used for carpet sizes, appliance sizes or items of furniture. Floor plans not to scale and may vary from page to page.

1 BEDROOM APARTMENT

GROUND FLOOR
APARTMENT 965

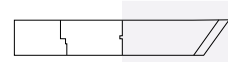


View towards
landscaped boulevard

NORTH

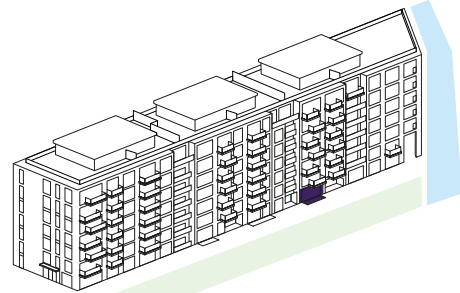
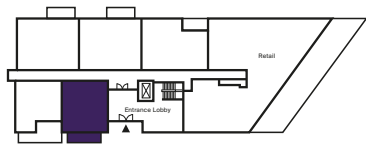


BLOCK G



G1 - GROUND FLOOR

ELEVATION
SOUTH EAST



TOTAL INTERNAL AREA	56.60 SQ M	609 SQ FT
LIVING / DINING	3.85M X 5.24M	12' 8" X 17' 2"
KITCHEN	2.35M X 2.76M	7' 9" X 9' 1"
BEDROOM	3.05M X 5.40M	10' 0" X 17' 9"
BALCONY	7.95 SQ M	86 SQ FT

Washing machine Integrated fridge freezer 4 ring hob C Cupboard U Utility room TV PS Privacy screen

Floor plans shown for Westwood House are approximate measurements only and are not to scale. Plot Locators and Elevations shown are not to scale. Exact layout and size may vary. All measurements may vary within a tolerance of 5%. The dimensions are not intended to be used for carpet sizes, appliance sizes or items of furniture. Floor plans not to scale and may vary from page to page.

1 BEDROOM APARTMENT

GROUND FLOOR
APARTMENT 1034

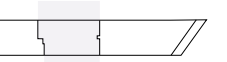


View towards
landscaped boulevard

NORTH

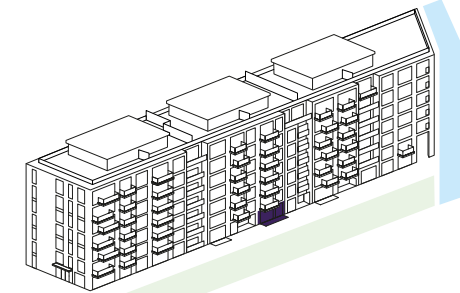


BLOCK G



G2 - GROUND FLOOR

ELEVATION
SOUTH EAST



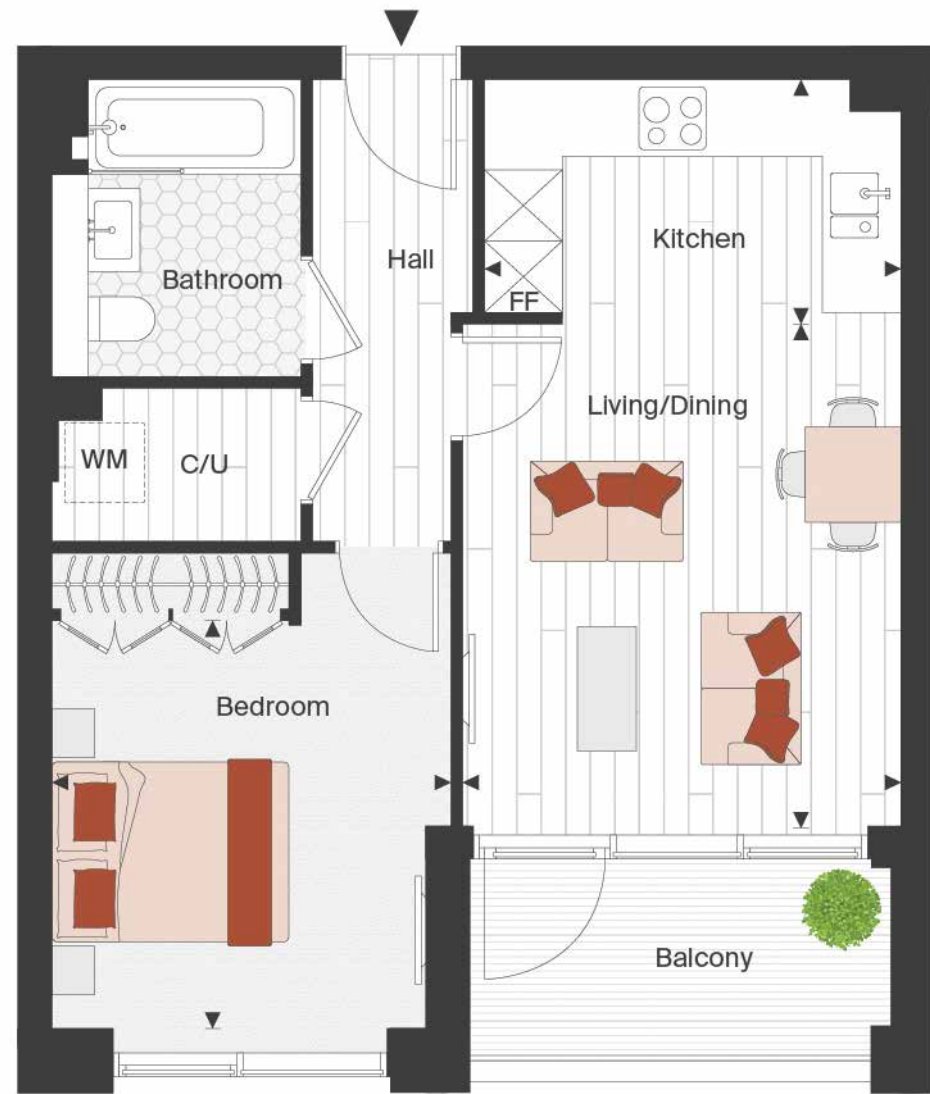
TOTAL INTERNAL AREA	56.88 SQ M	612 SQ FT
LIVING / DINING	4.50M X 4.33M	14' 9" X 14' 2"
KITCHEN	2.54M X 2.05M	8' 4" X 6' 9"
BEDROOM	3.29M X 4.59M	10' 9" X 15' 1"
BALCONY	9.54 SQ M	103 SQ FT

Washing machine Integrated fridge freezer 4 ring hob C Cupboard U Utility room TV PS Privacy screen

Floor plans shown for Westwood House are approximate measurements only and are not to scale. Plot Locators and Elevations shown are not to scale. Exact layout and size may vary. All measurements may vary within a tolerance of 5%. The dimensions are not intended to be used for carpet sizes, appliance sizes or items of furniture. Floor plans not to scale and may vary from page to page.

1 BEDROOM APARTMENT

FIRST, SECOND, THIRD, FOURTH AND FIFTH FLOORS
APARTMENTS 972, 982, 992, 1002 & 1012



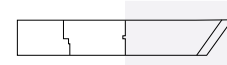
NORTH



View towards
landscaped boulevard

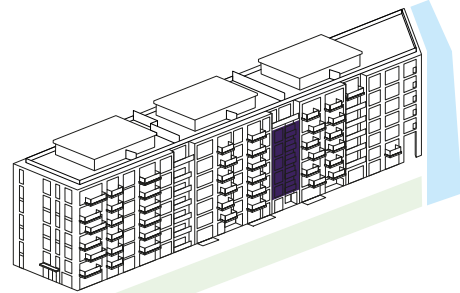
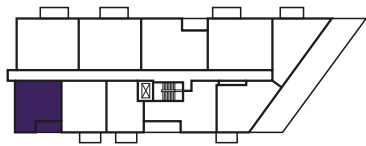


BLOCK G



G1 - FIRST FLOOR

ELEVATION
SOUTH EAST



TOTAL INTERNAL AREA	51.03 SQ M	549 SQ FT
LIVING / DINING	3.68M X 4.27M	12' 1" X 14' 0"
KITCHEN	3.50M X 2.06M	11' 6" X 6' 9"
BEDROOM	3.37M X 3.41M	11' 1" X 11' 2"
BALCONY	5.69 SQ M	61 SQ FT

Washing machine Integrated fridge freezer 4 ring hob C Cupboard U Utility room TV PS Privacy screen

Floor plans shown for Westwood House are approximate measurements only and are not to scale. Plot Locators and Elevations shown are not to scale. Exact layout and size may vary. All measurements may vary within a tolerance of 5%. The dimensions are not intended to be used for carpet sizes, appliance sizes or items of furniture. Floor plans not to scale and may vary from page to page.

1 BEDROOM APARTMENT

FIRST FLOOR
APARTMENT 977



NORTH



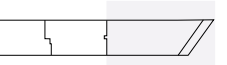
View towards
canal



View towards
canal

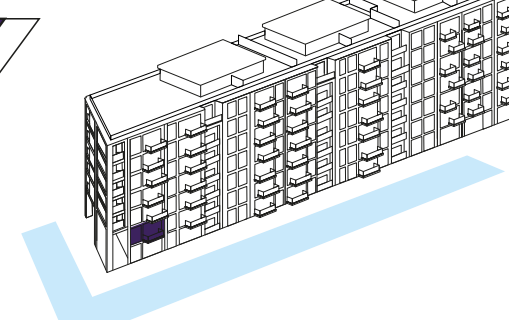
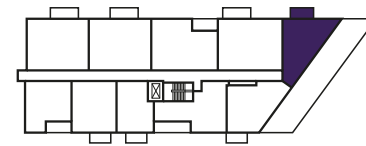


BLOCK G



G1 - FIRST FLOOR

ELEVATION
NORTH WEST



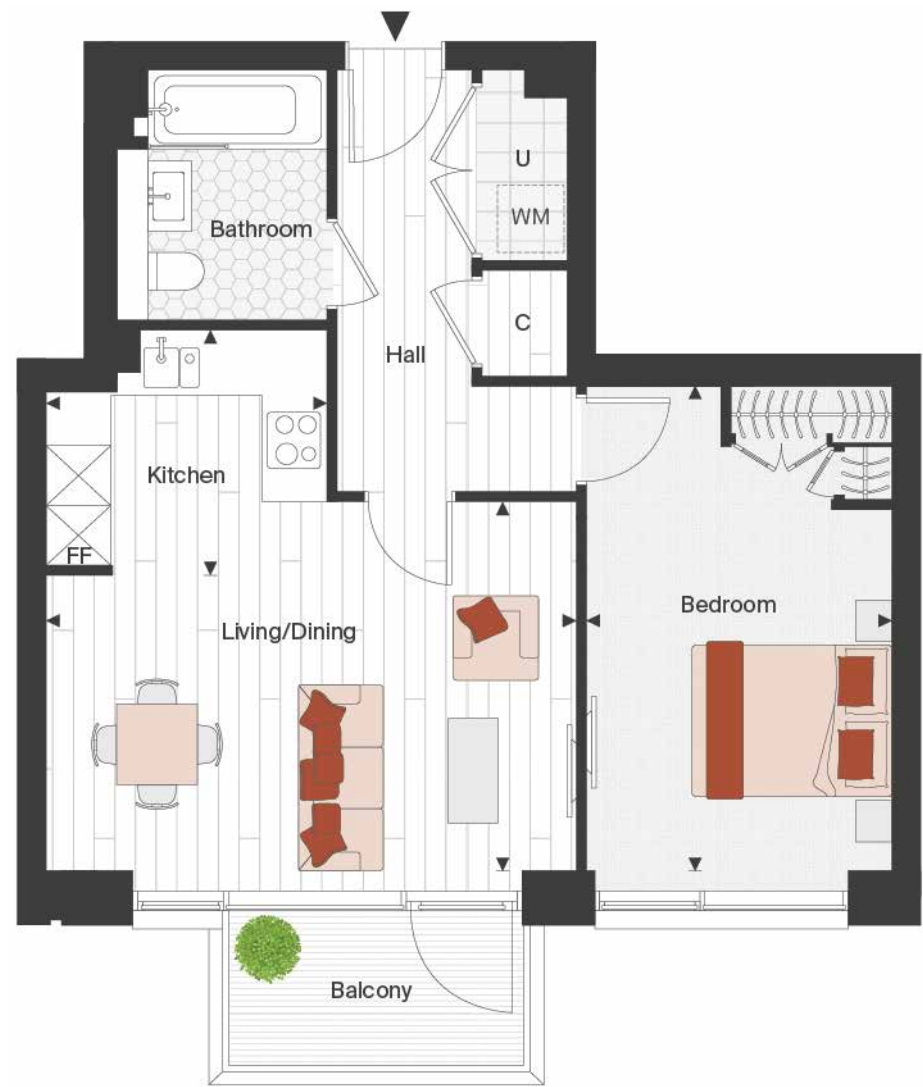
TOTAL INTERNAL AREA	54.49 SQ M	586 SQ FT
LIVING / DINING	5.59M X 3.03M	18' 4" X 9' 11"
KITCHEN	3.08M X 1.53M	10' 1" X 5' 0"
BEDROOM	3.00M X 4.94M	9' 10" X 16' 2"
BALCONY	5.29 SQ M	57 SQ FT

Washing machine Integrated fridge freezer 4 ring hob C Cupboard U Utility room TV PS Privacy screen

Floor plans shown for Westwood House are approximate measurements only and are not to scale. Plot Locators and Elevations shown are not to scale. Exact layout and size may vary. All measurements may vary within a tolerance of 5%. The dimensions are not intended to be used for carpet sizes, appliance sizes or items of furniture. Floor plans not to scale and may vary from page to page.

1 BEDROOM APARTMENT

FIRST, THIRD AND FIFTH FLOORS
APARTMENTS 1040, 1052 & 1064

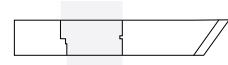


View towards
landscaped boulevard

NORTH

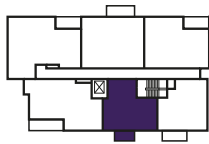


BLOCK G



G2 - FIRST FLOOR

ELEVATION
SOUTH EAST



TOTAL INTERNAL AREA	56.29 SQ M	606 SQ FT
LIVING / DINING	5.30M X 3.69M	17' 5" X 12' 1"
KITCHEN	2.81M X 2.45M	9' 3" X 8' 0"
BEDROOM	3.05M X 4.84M	10' 0" X 15' 11"
BALCONY	4.60 SQ M	50 SQ FT

Washing machine Integrated fridge freezer 4 ring hob C Cupboard U Utility room TV PS Privacy screen

Floor plans shown for Westwood House are approximate measurements only and are not to scale. Plot Locators and Elevations shown are not to scale. Exact layout and size may vary. All measurements may vary within a tolerance of 5%. The dimensions are not intended to be used for carpet sizes, appliance sizes or items of furniture. Floor plans not to scale and may vary from page to page.

1 BEDROOM APARTMENT

FIRST, THIRD AND FIFTH FLOORS
APARTMENTS 971, 991 & 1011

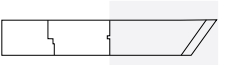


View towards
landscaped boulevard

NORTH

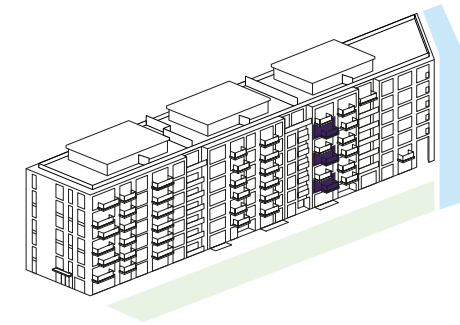
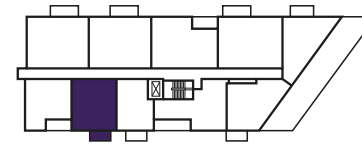


BLOCK G



G1 - FIRST FLOOR

ELEVATION
SOUTH EAST



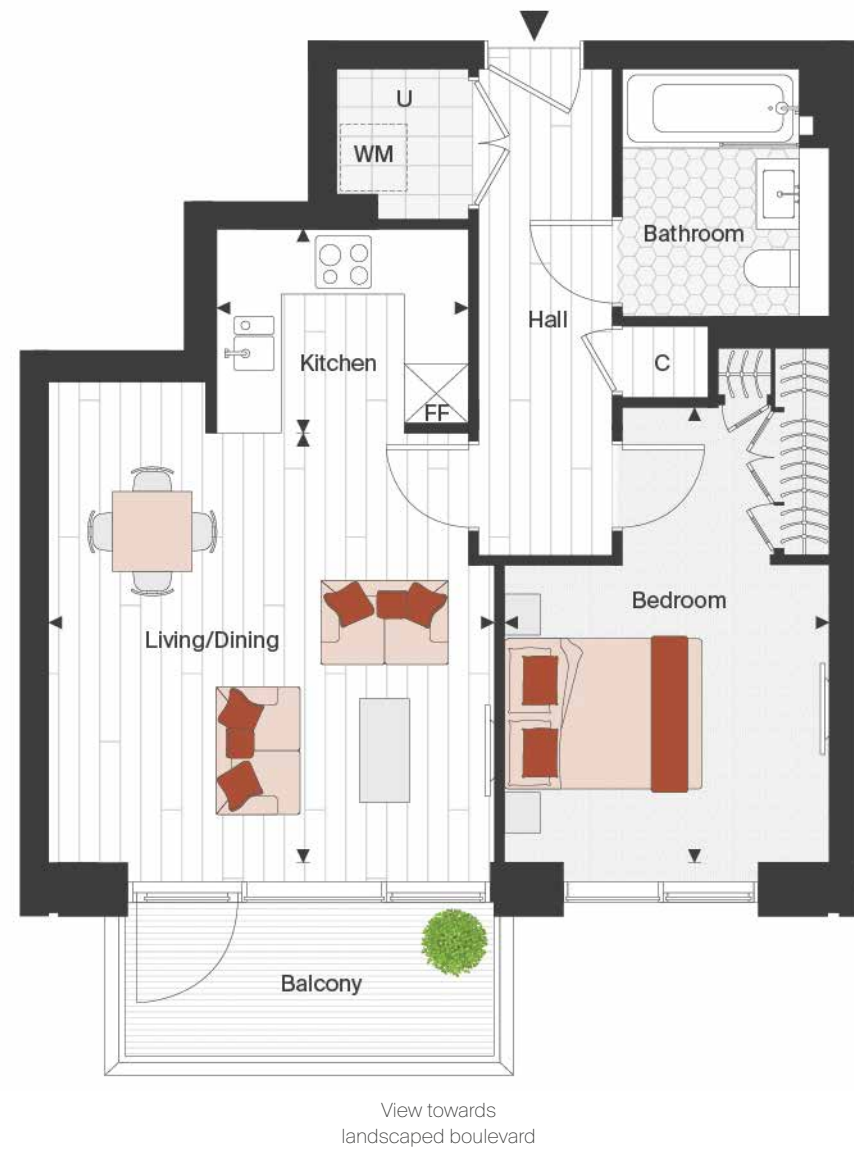
TOTAL INTERNAL AREA	56.53 SQ M	609 SQ FT
LIVING / DINING	3.85M X 5.24M	12' 8" X 17' 2"
KITCHEN	2.39M X 2.76M	7' 10" X 9' 1"
BEDROOM	3.05M X 5.40M	10' 0" X 17' 9"
BALCONY	5.12 SQ M	55 SQ FT

Washing machine Integrated fridge freezer 4 ring hob C Cupboard U Utility room TV PS Privacy screen

Floor plans shown for Westwood House are approximate measurements only and are not to scale. Plot Locators and Elevations shown are not to scale. Exact layout and size may vary. All measurements may vary within a tolerance of 5%. The dimensions are not intended to be used for carpet sizes, appliance sizes or items of furniture. Floor plans not to scale and may vary from page to page.

1 BEDROOM APARTMENT

FIRST, SECOND, THIRD, FOURTH AND FIFTH FLOORS
APARTMENTS 1039, 1045, 1051, 1057 & 1063



G2 - FIRST FLOOR

ELEVATION SOUTH EAST



	56.88 SQ M	612 SQ FT
TOTAL INTERNAL AREA		
LIVING / DINING	4.50M X 4.33M	14' 9" X 14' 2"
KITCHEN	2.54M X 2.05M	8' 4" X 6' 9"
BEDROOM	3.29M X 4.59M	10' 9" X 15' 1"
BALCONY	5.80 SQ M	62 SQ FT

Washing machine Integrated fridge freezer 4 ring hob C Cupboard U Utility room TV PS Privacy screen

Floor plans shown for Westwood House are approximate measurements only and are not to scale. Plot Locators and Elevations shown are not to scale. Exact layout and size may vary. All measurements may vary within a tolerance of 5%. The dimensions are not intended to be used for carpet sizes, appliance sizes or items of furniture. Floor plans not to scale and may vary from page to page.

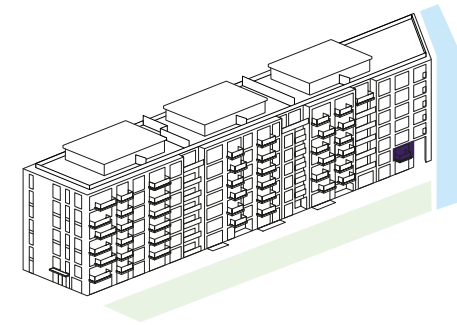
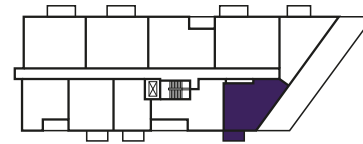
1 BEDROOM APARTMENT

FIRST FLOOR
APARTMENT 978



G1 - FIRST FLOOR

ELEVATION SOUTH EAST



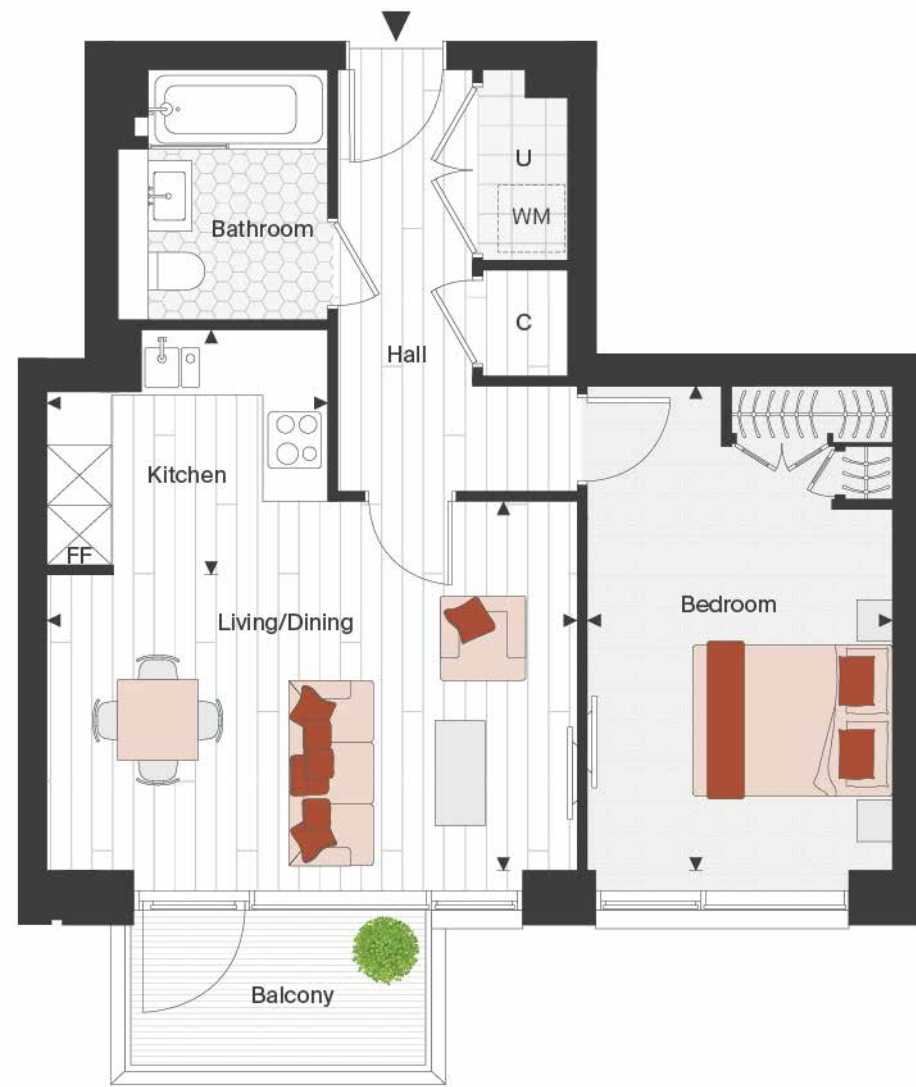
	58.53 SQ M	630 SQ FT
TOTAL INTERNAL AREA		
LIVING / DINING	6.34M X 4.67M	20' 10" X 15' 4"
KITCHEN	2.64M X 2.48M	8' 8" X 8' 1"
BEDROOM	4.11M X 2.94M	13' 6" X 9' 8"
BALCONY	4.43 SQ M	48 SQ FT

Washing machine Integrated fridge freezer 4 ring hob C Cupboard U Utility room TV PS Privacy screen

Floor plans shown for Westwood House are approximate measurements only and are not to scale. Plot Locators and Elevations shown are not to scale. Exact layout and size may vary. All measurements may vary within a tolerance of 5%. The dimensions are not intended to be used for carpet sizes, appliance sizes or items of furniture. Floor plans not to scale and may vary from page to page.

1 BEDROOM APARTMENT

SECOND AND FOURTH FLOOR
APARTMENTS 1046 & 1058

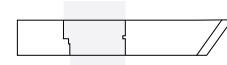


View towards
landscaped boulevard

NORTH

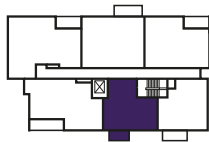


BLOCK G



G2 - SECOND FLOOR

ELEVATION
SOUTH EAST



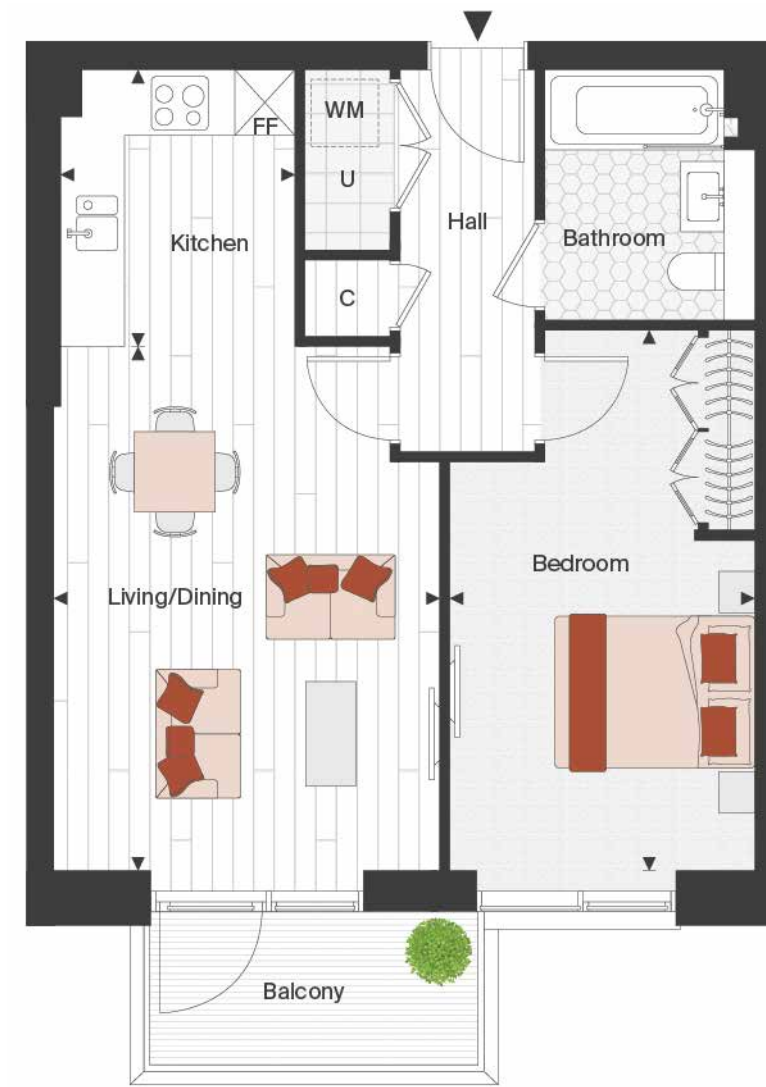
TOTAL INTERNAL AREA	56.29 SQ M	606 SQ FT
LIVING / DINING	5.30M X 3.69M	17' 5" X 12' 1"
KITCHEN	2.81M X 2.45M	9' 3" X 8' 0"
BEDROOM	3.05M X 4.84M	10' 0" X 15' 11"
BALCONY	4.60 SQ M	50 SQ FT

Washing machine Integrated fridge freezer 4 ring hob C Cupboard U Utility room TV PS Privacy screen

Floor plans shown for Westwood House are approximate measurements only and are not to scale. Plot Locators and Elevations shown are not to scale. Exact layout and size may vary. All measurements may vary within a tolerance of 5%. The dimensions are not intended to be used for carpet sizes, appliance sizes or items of furniture. Floor plans not to scale and may vary from page to page.

1 BEDROOM APARTMENT

SECOND AND FOURTH FLOORS
APARTMENTS 981 & 1001

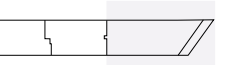


View towards
landscaped boulevard

NORTH

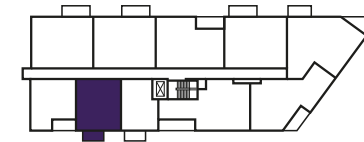


BLOCK G



G1 - SECOND FLOOR

ELEVATION
SOUTH EAST



TOTAL INTERNAL AREA	56.60 SQ M	609 SQ FT
LIVING / DINING	3.85M X 5.24M	12' 8" X 17' 2"
KITCHEN	2.35M X 2.76M	7' 9" X 9' 1"
BEDROOM	3.05M X 5.40M	10' 0" X 17' 9"
BALCONY	5.12 SQ M	55 SQ FT

Washing machine Integrated fridge freezer 4 ring hob C Cupboard U Utility room TV PS Privacy screen

Floor plans shown for Westwood House are approximate measurements only and are not to scale. Plot Locators and Elevations shown are not to scale. Exact layout and size may vary. All measurements may vary within a tolerance of 5%. The dimensions are not intended to be used for carpet sizes, appliance sizes or items of furniture. Floor plans not to scale and may vary from page to page.

1 BEDROOM APARTMENT

SIXTH FLOOR
APARTMENT 1108



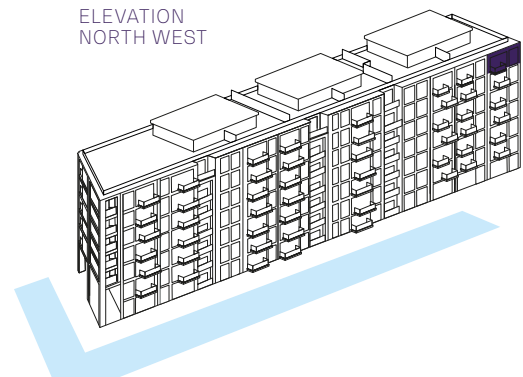
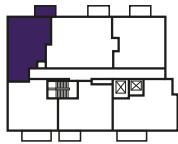
1 BEDROOM APARTMENT

SIXTH FLOOR
APARTMENT 1069



G3 - SIXTH FLOOR

ELEVATION NORTH WEST



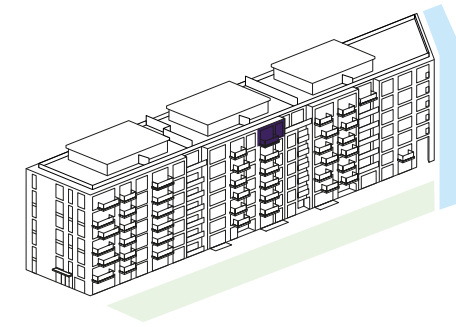
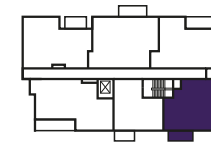
TOTAL INTERNAL AREA	54.31 SQ M	585 SQ FT
LIVING	3.13M X 4.69M	10' 3" X 15' 5"
KITCHEN / DINING	3.40M X 3.99M	11' 2" X 13' 1"
BEDROOM	3.00M X 3.15M	9' 10" X 10' 4"
BALCONY	4.95 SQ M	53 SQ FT

Washing machine Integrated fridge freezer 4 ring hob C Cupboard U Utility room TV PS Privacy screen

Floor plans shown for Westwood House are approximate measurements only and are not to scale. Plot Locators and Elevations shown are not to scale. Exact layout and size may vary. All measurements may vary within a tolerance of 5%. The dimensions are not intended to be used for carpet sizes, appliance sizes or items of furniture. Floor plans not to scale and may vary from page to page.

G2 - SIXTH FLOOR

ELEVATION SOUTH EAST



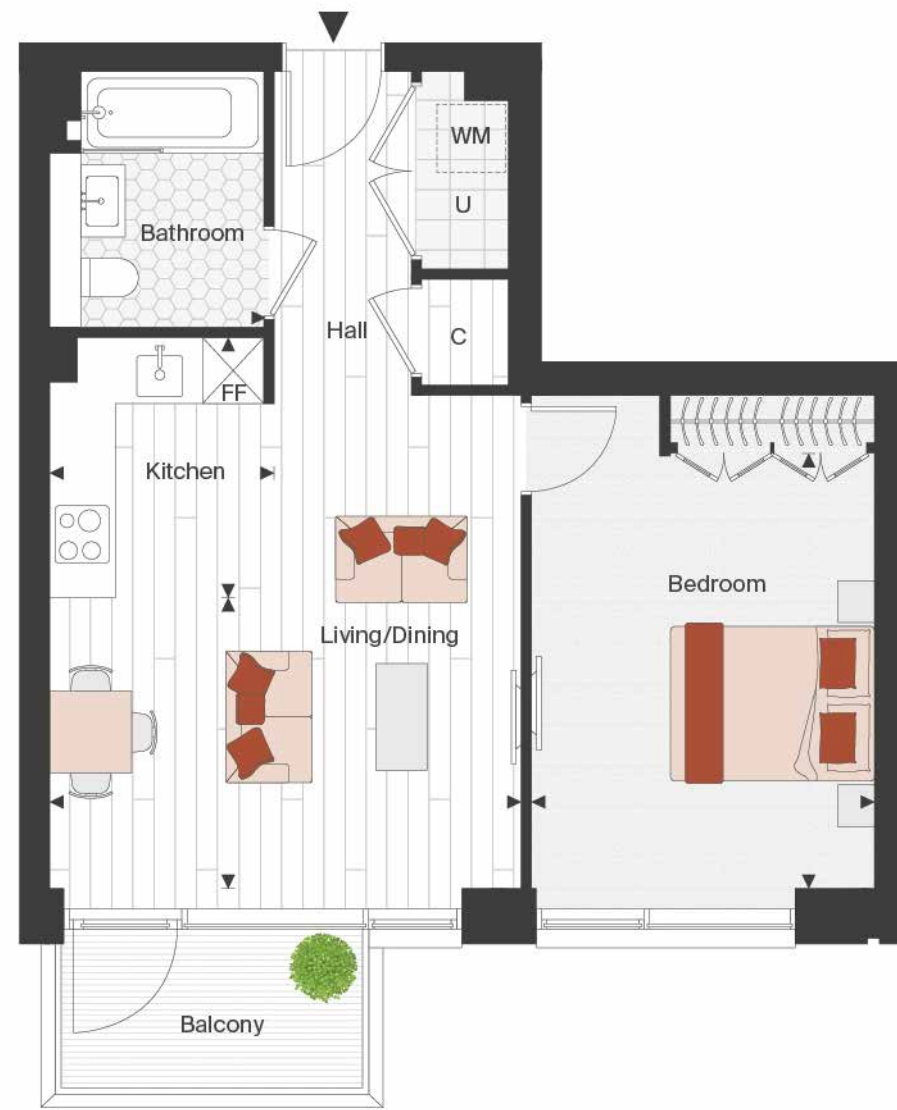
TOTAL INTERNAL AREA	54.46 SQ M	586 SQ FT
LIVING / DINING	4.16M X 4.33M	13' 8" X 14' 2"
KITCHEN	2.54M X 2.05M	8' 4" X 6' 9"
BEDROOM	3.29M X 4.59M	10' 9" X 15' 1"
BALCONY	5.80 SQ M	62 SQ FT

Washing machine Integrated fridge freezer 4 ring hob C Cupboard U Utility room TV PS Privacy screen

Floor plans shown for Westwood House are approximate measurements only and are not to scale. Plot Locators and Elevations shown are not to scale. Exact layout and size may vary. All measurements may vary within a tolerance of 5%. The dimensions are not intended to be used for carpet sizes, appliance sizes or items of furniture. Floor plans not to scale and may vary from page to page.

1 BEDROOM APARTMENT

SIXTH FLOOR
APARTMENT 1070



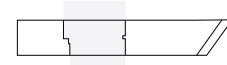
NORTH



View towards
landscaped boulevard

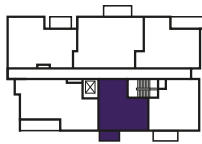


BLOCK G



G2 - SIXTH FLOOR

ELEVATION
SOUTH EAST



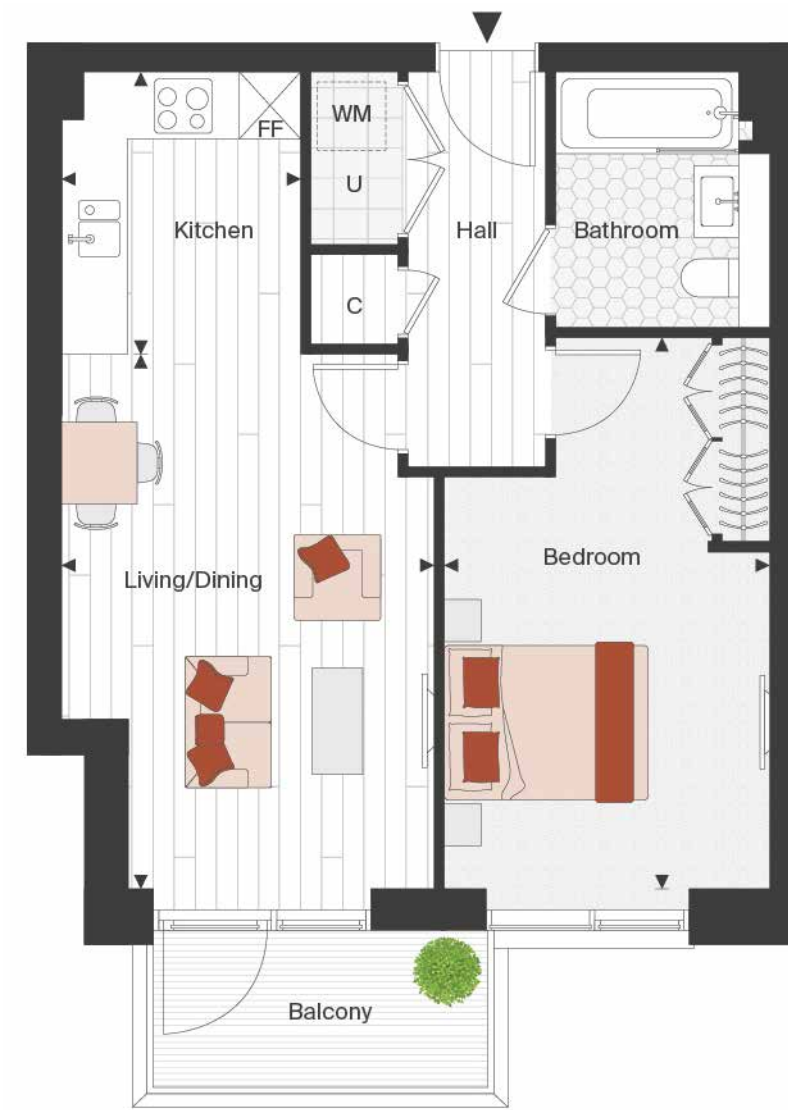
TOTAL INTERNAL AREA	54.55 SQ M	587 SQ FT
LIVING / DINING	4.62M X 2.85M	15' 2" X 9' 4"
KITCHEN	2.20M X 2.55M	7' 2" X 8' 4"
BEDROOM	3.35M X 4.24M	11' 0" X 13' 11"
BALCONY	4.60 SQ M	50 SQ FT

Washing machine Integrated fridge freezer 4 ring hob C Cupboard U Utility room TV PS Privacy screen

Floor plans shown for Westwood House are approximate measurements only and are not to scale. Plot Locators and Elevations shown are not to scale. Exact layout and size may vary. All measurements may vary within a tolerance of 5%. The dimensions are not intended to be used for carpet sizes, appliance sizes or items of furniture. Floor plans not to scale and may vary from page to page.

1 BEDROOM APARTMENT

SIXTH FLOOR
APARTMENT 1021



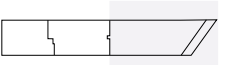
NORTH



View towards
landscaped boulevard

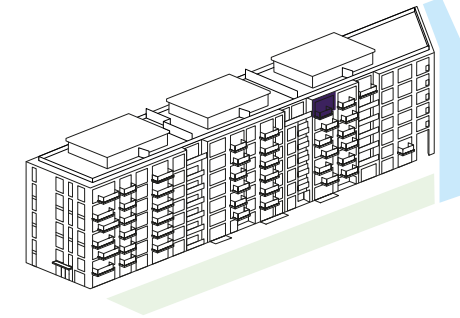


BLOCK G



G1 - SIXTH FLOOR

ELEVATION
SOUTH EAST



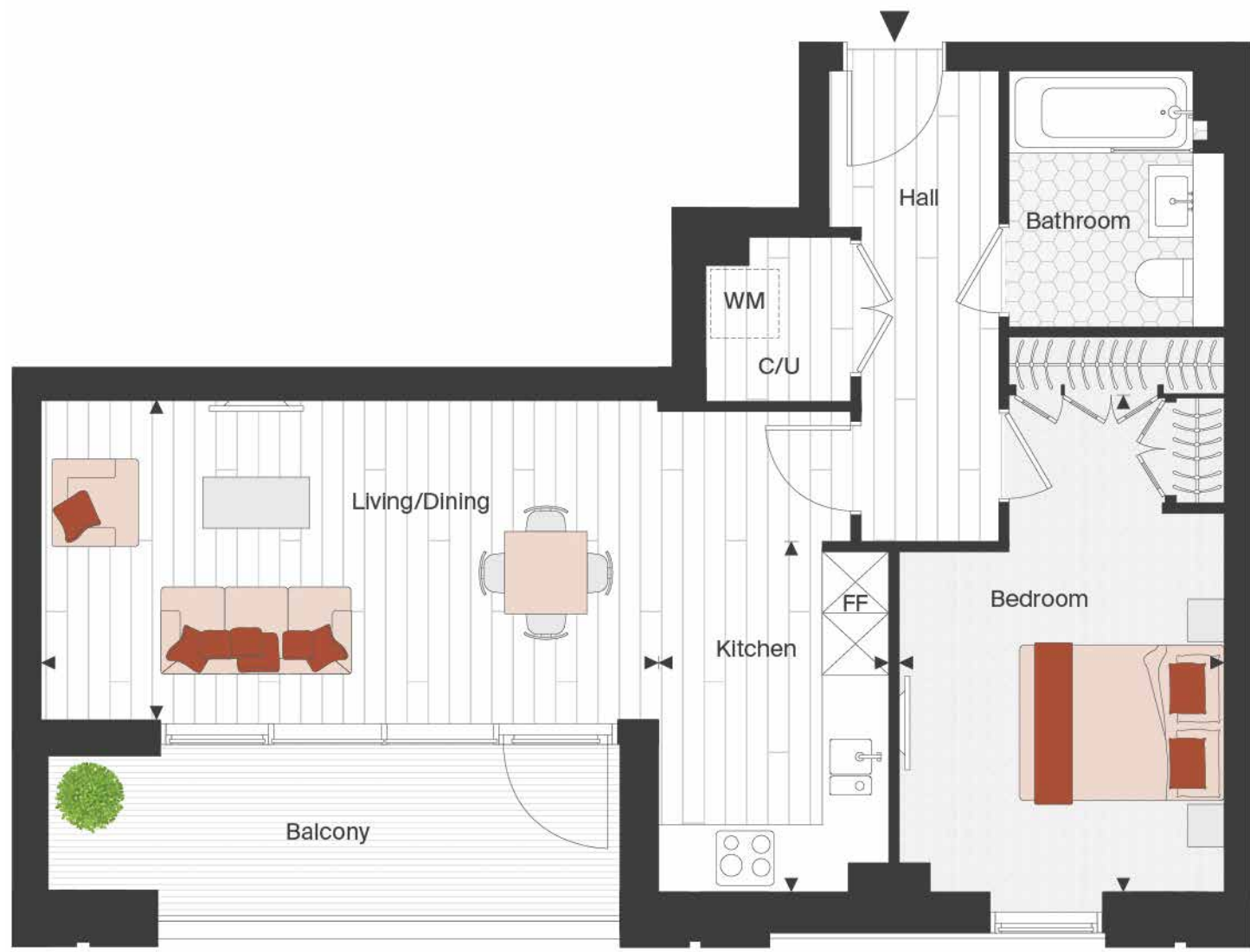
TOTAL INTERNAL AREA	55.44 SQ M	597 SQ FT
LIVING / DINING	3.65M X 5.24M	12' 0" X 17' 2"
KITCHEN	2.35M X 2.76M	7' 9" X 9' 1"
BEDROOM	3.20M X 5.40M	10' 6" X 17' 9"
BALCONY	5.12 SQ M	55 SQ FT

Washing machine Integrated fridge freezer 4 ring hob C Cupboard U Utility room TV PS Privacy screen

Floor plans shown for Westwood House are approximate measurements only and are not to scale. Plot Locators and Elevations shown are not to scale. Exact layout and size may vary. All measurements may vary within a tolerance of 5%. The dimensions are not intended to be used for carpet sizes, appliance sizes or items of furniture. Floor plans not to scale and may vary from page to page.

1 BEDROOM APARTMENT

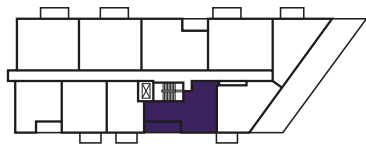
FIRST FLOOR
APARTMENT 979



NORTH   BLOCK G 

G1 - FIRST FLOOR

ELEVATION SOUTH EAST



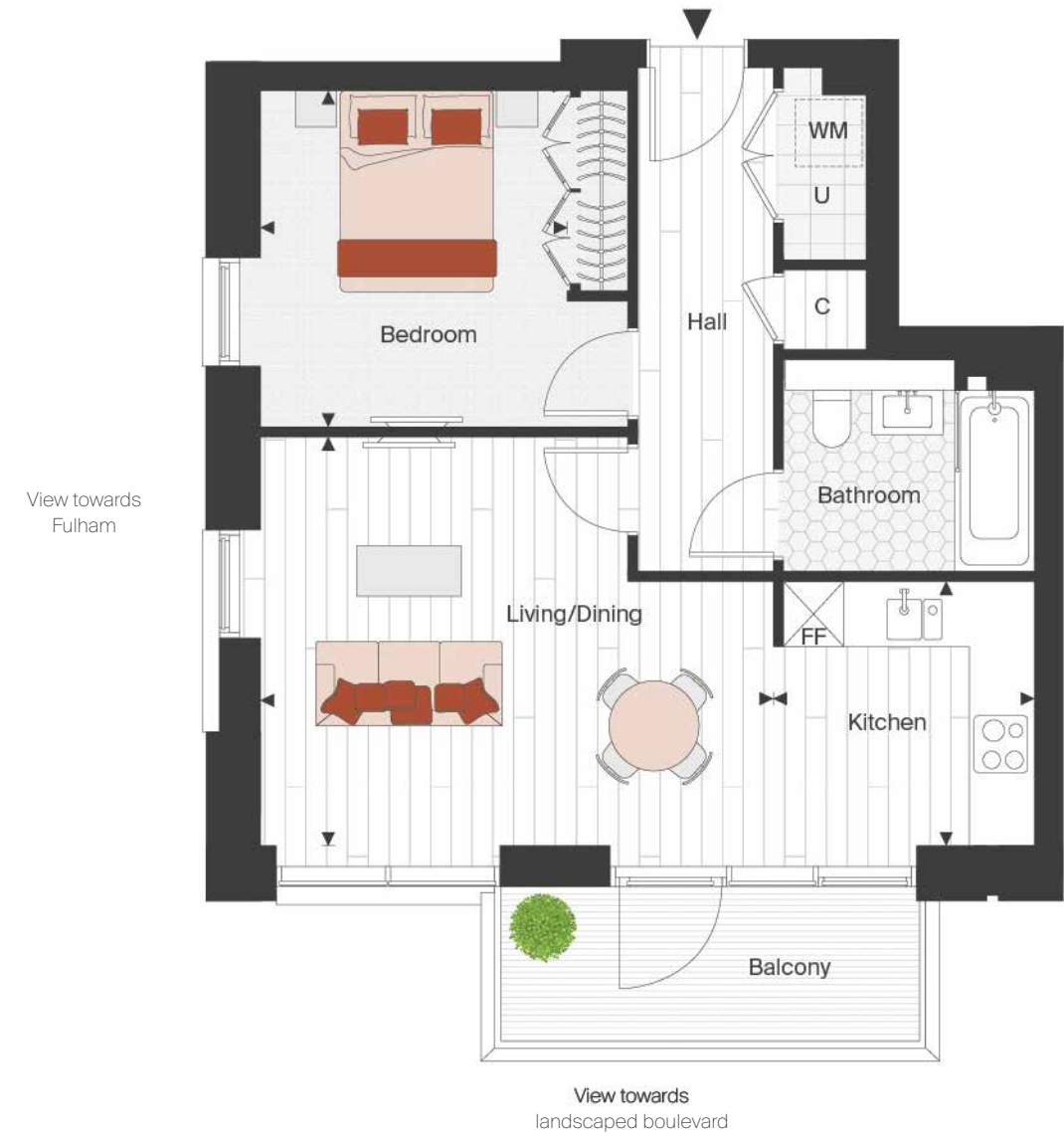
	TOTAL INTERNAL AREA	60.04 SQ M	646 SQ FT
LIVING / DINING	6.01M X 3.12M	19' 8" X 10' 3"	
KITCHEN	2.26M X 3.41M	7' 5" X 11' 2"	
BEDROOM	3.17M X 4.81M	10' 5" X 15' 9"	
BALCONY	8.65 SQ M	93 SQ FT	

 Washing machine  Integrated fridge freezer  4 ring hob  Cupboard  Utility room  TV  Privacy screen

Floor plans shown for Westwood House are approximate measurements only and are not to scale. Plot Locators and Elevations shown are not to scale. Exact layout and size may vary. All measurements may vary within a tolerance of 5%. The dimensions are not intended to be used for carpet sizes, appliance sizes or items of furniture. Floor plans not to scale and may vary from page to page.

1 BEDROOM APARTMENT

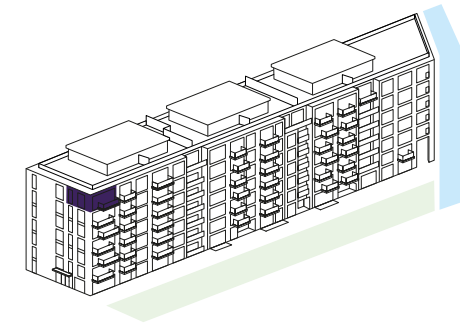
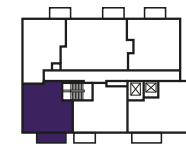
SIXTH FLOOR
APARTMENT 1107



NORTH   BLOCK G 

G3 - SIXTH FLOOR

ELEVATION SOUTH EAST



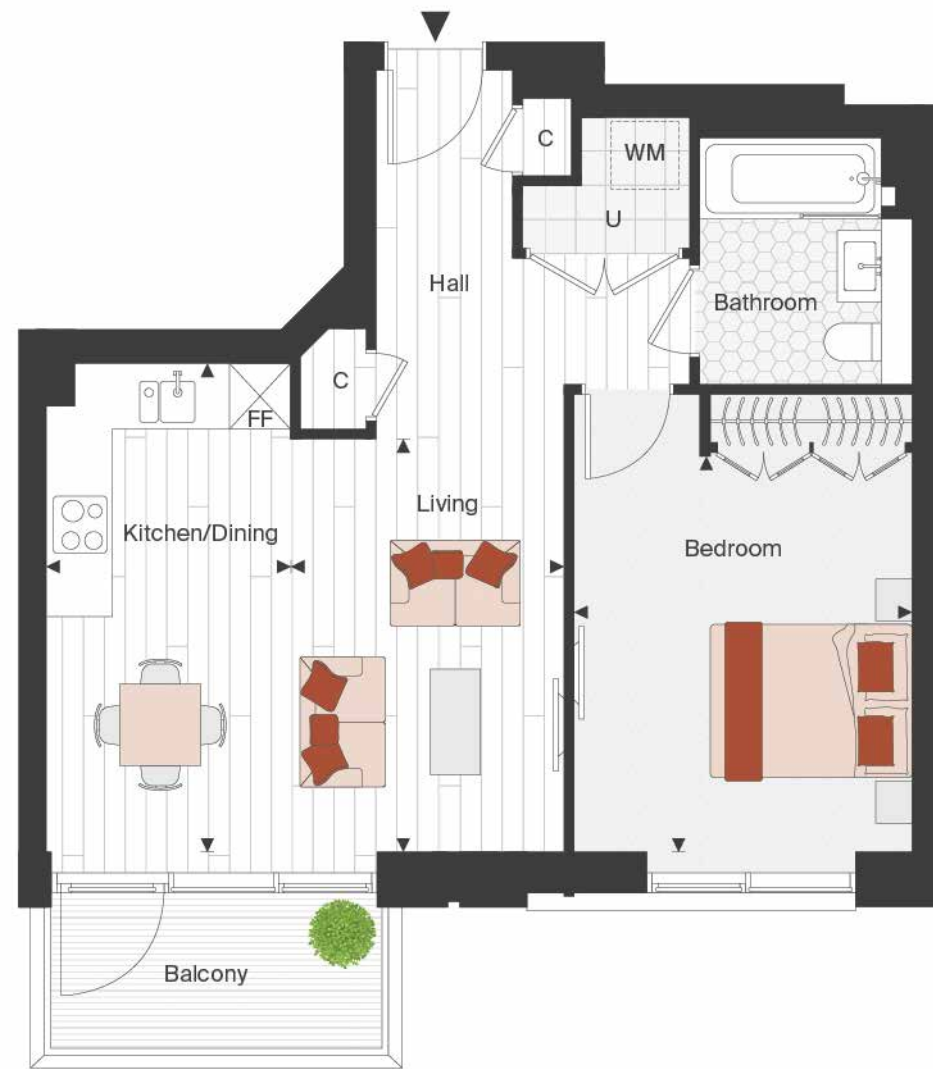
	TOTAL INTERNAL AREA	55.42 SQ M	597 SQ FT
LIVING / DINING	5.10M X 4.07M	16' 9" X 13' 4"	
KITCHEN	2.60M X 2.64M	8' 6" X 8' 8"	
BEDROOM	3.06M X 3.34M	10' 0" X 11' 0"	
BALCONY	6.49 SQ M	70 SQ FT	

 Washing machine  Integrated fridge freezer  4 ring hob  Cupboard  Utility room  TV  Privacy screen

Floor plans shown for Westwood House are approximate measurements only and are not to scale. Plot Locators and Elevations shown are not to scale. Exact layout and size may vary. All measurements may vary within a tolerance of 5%. The dimensions are not intended to be used for carpet sizes, appliance sizes or items of furniture. Floor plans not to scale and may vary from page to page.

1 BEDROOM APARTMENT

SIXTH FLOOR
APARTMENT 1106

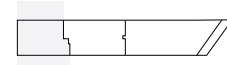


View towards
landscaped boulevard

NORTH

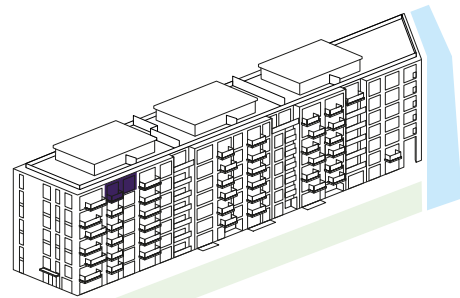
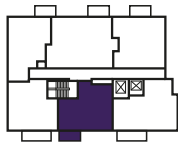


BLOCK G



G3 - SIXTH FLOOR

ELEVATION
SOUTH EAST



TOTAL INTERNAL AREA	56.34 SQ M	606 SQ FT
LIVING	2.70M X 4.09M	8' 10" X 13' 5"
KITCHEN / DINING	2.41M X 4.84M	7' 11" X 15' 11"
BEDROOM	3.35M X 3.93M	11' 0" X 12' 11"
BALCONY	5.12 SQ M	55 SQ FT

Washing machine
 Integrated fridge freezer
 4 ring hob
 Cupboard
 Utility room
 TV
 Privacy screen

Floor plans shown for Westwood House are approximate measurements only and are not to scale. Plot Locators and Elevations shown are not to scale. Exact layout and size may vary. All measurements may vary within a tolerance of 5%. The dimensions are not intended to be used for carpet sizes, appliance sizes or items of furniture. Floor plans not to scale and may vary from page to page.

1 BEDROOM APARTMENT

SIXTH FLOOR
APARTMENT 1111

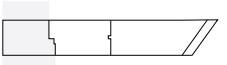


View towards
landscaped boulevard

NORTH

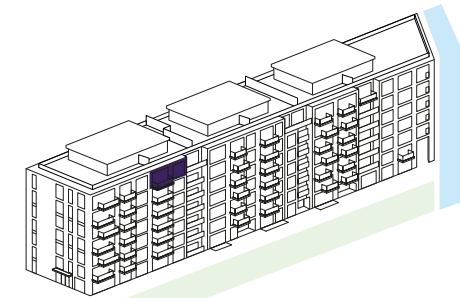
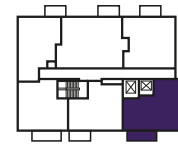


BLOCK G



G3 - SIXTH FLOOR

ELEVATION
SOUTH EAST



TOTAL INTERNAL AREA	64.88 SQ M	698 SQ FT
LIVING	3.99M X 5.24M	13' 1" X 17' 2"
KITCHEN / DINING	2.46M X 4.79M	8' 1" X 15' 9"
BEDROOM	3.48M X 3.46M	11' 5" X 11' 4"
BALCONY	7.00 SQ M	75 SQ FT

Washing machine
 Integrated fridge freezer
 4 ring hob
 Cupboard
 Utility room
 TV
 Privacy screen

Floor plans shown for Westwood House are approximate measurements only and are not to scale. Plot Locators and Elevations shown are not to scale. Exact layout and size may vary. All measurements may vary within a tolerance of 5%. The dimensions are not intended to be used for carpet sizes, appliance sizes or items of furniture. Floor plans not to scale and may vary from page to page.

2 BEDROOM APARTMENT

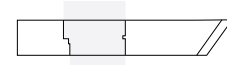
GROUND, FIRST, SECOND, THIRD, FOURTH AND FIFTH FLOORS
APARTMENTS 1033, 1038, 1044, 1050, 1056 & 1062



NORTH

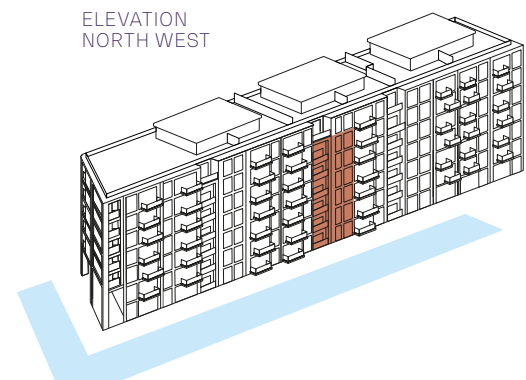
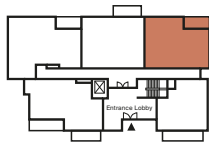


BLOCK G



G2 - GROUND FLOOR

ELEVATION NORTH WEST



	TOTAL INTERNAL AREA	72.25 SQ M	778 SQ FT
LIVING / DINING	3.46M X 4.07M	11' 4" X 13' 4"	
KITCHEN	4.64M X 1.90M	15' 3" X 6' 3"	
MASTER BEDROOM	3.00M X 3.09M	9' 10" X 10' 2"	
BEDROOM 2	3.04M X 3.22M	10' 0" X 10' 7"	
BALCONY	6.41 SQ M	69 SQ FT	

Washing machine Integrated fridge freezer 4 ring hob C Cupboard U Utility room TV PS Privacy screen

Floor plans shown for Westwood House are approximate measurements only and are not to scale. Plot Locators and Elevations shown are not to scale. Exact layout and size may vary. All measurements may vary within a tolerance of 5%. The dimensions are not intended to be used for carpet sizes, appliance sizes or items of furniture. Floor plans not to scale and may vary from page to page.

2 BEDROOM APARTMENT

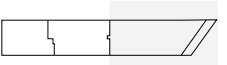
GROUND, FIRST, SECOND, THIRD, FOURTH AND FIFTH FLOORS
APARTMENTS 969, 975, 985, 995, 1005 & 1015



NORTH

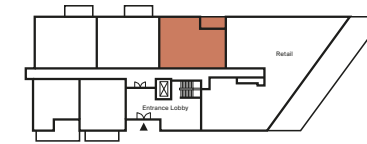


BLOCK G



G1 - GROUND FLOOR

ELEVATION NORTH WEST



	TOTAL INTERNAL AREA	76.21 SQ M	820 SQ FT
LIVING / DINING	4.45M X 3.55M	14' 7" X 11' 8"	
KITCHEN	3.50M X 2.41M	11' 6" X 7' 11"	
MASTER BEDROOM	3.04M X 5.31M	10' 0" X 17' 5"	
BEDROOM 2	2.92M X 4.17M	9' 7" X 13' 8"	
BALCONY	7.58 SQ M	82 SQ FT	

Washing machine Integrated fridge freezer 4 ring hob C Cupboard U Utility room TV PS Privacy screen

Floor plans shown for Westwood House are approximate measurements only and are not to scale. Plot Locators and Elevations shown are not to scale. Exact layout and size may vary. All measurements may vary within a tolerance of 5%. The dimensions are not intended to be used for carpet sizes, appliance sizes or items of furniture. Floor plans not to scale and may vary from page to page.

2 BEDROOM APARTMENT

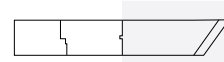
GROUND, SECOND AND FOURTH FLOORS
APARTMENTS 968, 984 & 1004



NORTH

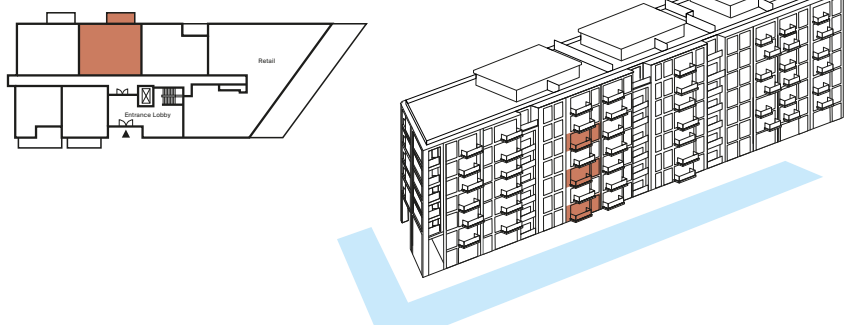


BLOCK G



G1 - GROUND FLOOR

ELEVATION NORTH WEST



	78.40 SQ M	844 SQ FT
TOTAL INTERNAL AREA	78.40 SQ M	844 SQ FT
LIVING / DINING	3.65M X 5.75M	12' 0" X 18' 10"
KITCHEN	3.38M X 2.16M	11' 1" X 7' 1"
MASTER BEDROOM	3.16M X 5.26M	10' 4" X 17' 3"
BEDROOM 2	2.82M X 4.12M	9' 3" X 13' 6"
BALCONY	6.66 SQ M	72 SQ FT

Washing machine Integrated fridge freezer 4 ring hob C Cupboard U Utility room TV PS Privacy screen

Floor plans shown for Westwood House are approximate measurements only and are not to scale. Plot Locators and Elevations shown are not to scale. Exact layout and size may vary. All measurements may vary within a tolerance of 5%. The dimensions are not intended to be used for carpet sizes, appliance sizes or items of furniture. Floor plans not to scale and may vary from page to page.

2 BEDROOM APARTMENT

GROUND FLOOR
APARTMENT 1030



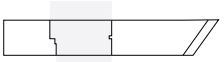
NORTH



View towards landscaped boulevard

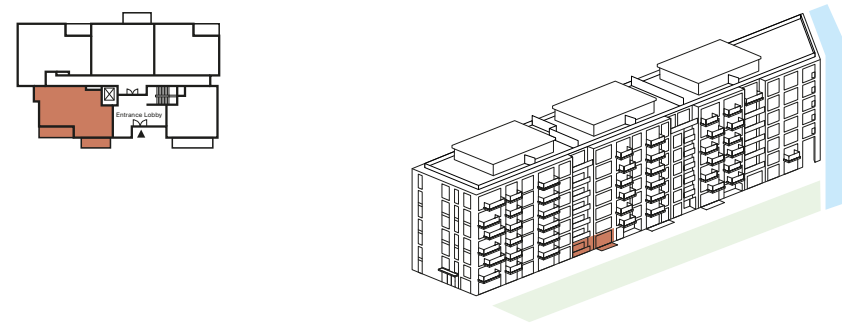


BLOCK G



G2 - GROUND FLOOR

ELEVATION SOUTH EAST



	78.54 SQ M	845 SQ FT
TOTAL INTERNAL AREA	78.54 SQ M	845 SQ FT
LIVING / DINING	5.83M X 3.70M	19' 2" X 12' 2"
KITCHEN	3.40M X 2.60M	11' 2" X 8' 6"
MASTER BEDROOM	3.01M X 4.19M	9' 10" X 13' 9"
BEDROOM 2	2.75M X 4.10M	9' 0" X 13' 5"
BALCONY	15.33 SQ M	165 SQ FT

Washing machine Integrated fridge freezer 4 ring hob C Cupboard U Utility room TV PS Privacy screen

Floor plans shown for Westwood House are approximate measurements only and are not to scale. Plot Locators and Elevations shown are not to scale. Exact layout and size may vary. All measurements may vary within a tolerance of 5%. The dimensions are not intended to be used for carpet sizes, appliance sizes or items of furniture. Floor plans not to scale and may vary from page to page.

2 BEDROOM APARTMENT

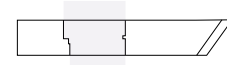
GROUND, SECOND AND FOURTH FLOOR
APARTMENTS 1032, 1043 & 1055



NORTH

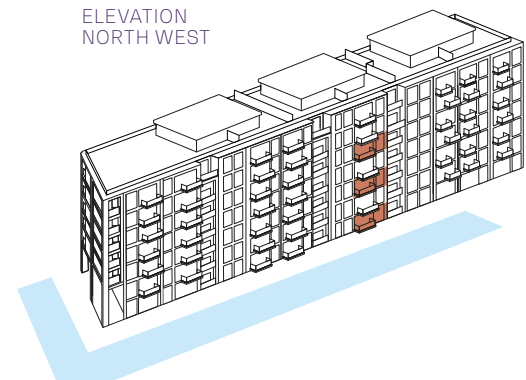
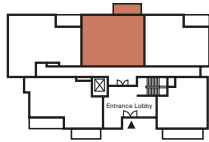


BLOCK G



G2 - GROUND FLOOR

ELEVATION NORTH WEST



TOTAL INTERNAL AREA	78.58 SQ M	846 SQ FT
LIVING / DINING	3.65M X 5.56M	12' 0" X 18' 3"
KITCHEN	3.38M X 2.35M	11' 1" X 7' 9"
MASTER BEDROOM	3.22M X 5.31M	10' 7" X 17' 5"
BEDROOM 2	2.75M X 3.47M	9' 0" X 11' 5"
BALCONY	6.66 SQ M	72 SQ FT

Washing machine Integrated fridge freezer 4 ring hob C Cupboard U Utility room TV PS Privacy screen

Floor plans shown for Westwood House are approximate measurements only and are not to scale. Plot Locators and Elevations shown are not to scale. Exact layout and size may vary. All measurements may vary within a tolerance of 5%. The dimensions are not intended to be used for carpet sizes, appliance sizes or items of furniture. Floor plans not to scale and may vary from page to page.

2 BEDROOM APARTMENT

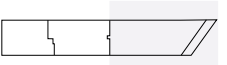
GROUND, SECOND AND FOURTH FLOORS
APARTMENTS 967, 983 & 1003



NORTH

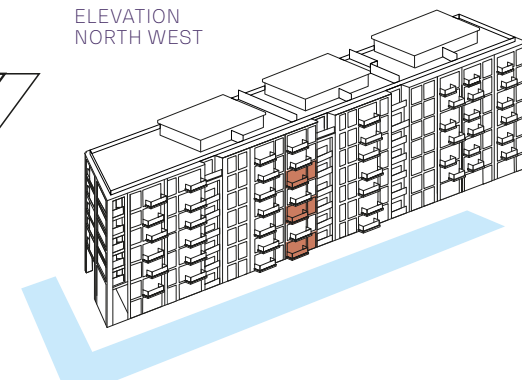
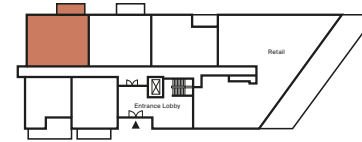


BLOCK G



G1 - GROUND FLOOR

ELEVATION NORTH WEST



TOTAL INTERNAL AREA	78.77 SQ M	848 SQ FT
LIVING / DINING	3.66M X 5.31M	12' 0" X 17' 5"
KITCHEN	3.38M X 2.60M	11' 1" X 8' 6"
MASTER BEDROOM	3.16M X 5.31M	10' 4" X 17' 5"
BEDROOM 2	2.84M X 4.15M	9' 4" X 13' 7"
BALCONY	6.66 SQ M	72 SQ FT

Washing machine Integrated fridge freezer 4 ring hob C Cupboard U Utility room TV PS Privacy screen

Floor plans shown for Westwood House are approximate measurements only and are not to scale. Plot Locators and Elevations shown are not to scale. Exact layout and size may vary. All measurements may vary within a tolerance of 5%. The dimensions are not intended to be used for carpet sizes, appliance sizes or items of furniture. Floor plans not to scale and may vary from page to page.

2 BEDROOM APARTMENT

GROUND, SECOND AND FOURTH FLOOR
APARTMENTS 1031, 1042 & 1054

2 BEDROOM APARTMENT

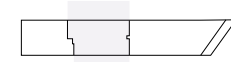
FIRST, SECOND, THIRD, FOURTH AND FIFTH FLOORS
APARTMENTS 976, 986, 996, 1006 & 1016



NORTH



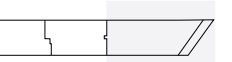
BLOCK G



NORTH

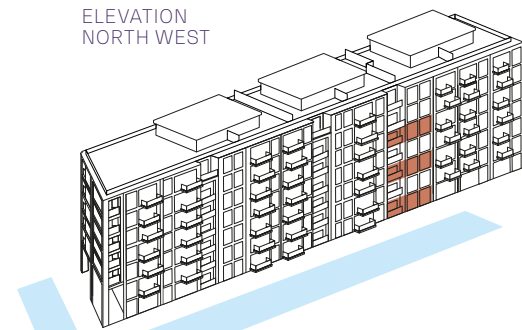
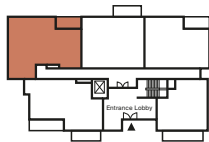


BLOCK G



G2 - GROUND FLOOR

ELEVATION
NORTH WEST



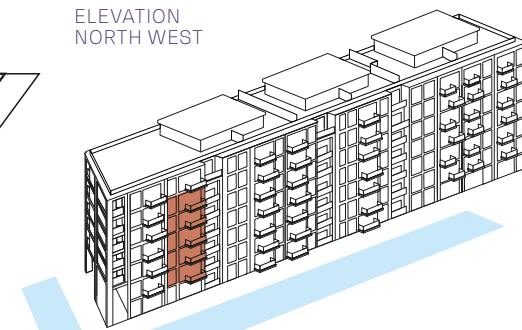
TOTAL INTERNAL AREA	89.20 SQ M	960 SQ FT
LIVING / DINING	5.49M X 3.75M	18' 0" X 12' 3"
KITCHEN	3.45M X 2.22M	11' 4" X 7' 3"
MASTER BEDROOM	3.28M X 4.25M	10' 9" X 13' 11"
BEDROOM 2	3.43M X 4.53M	11' 3" X 14' 10"
BALCONY	7.04 SQ M	76 SQ FT

Washing machine Integrated fridge freezer 4 ring hob C Cupboard U Utility room TV PS Privacy screen

Floor plans shown for Westwood House are approximate measurements only and are not to scale. Plot Locators and Elevations shown are not to scale. Exact layout and size may vary. All measurements may vary within a tolerance of 5%. The dimensions are not intended to be used for carpet sizes, appliance sizes or items of furniture. Floor plans not to scale and may vary from page to page.

G1 - FIRST FLOOR

ELEVATION
NORTH WEST



TOTAL INTERNAL AREA	78.35 SQ M	843 SQ FT
LIVING / DINING	3.66M X 5.31M	12' 0" X 17' 5"
KITCHEN	3.39M X 2.60M	11' 1" X 8' 6"
MASTER BEDROOM	3.16M X 5.16M	10' 4" X 16' 11"
BEDROOM 2	2.81M X 4.01M	9' 3" X 13' 2"
BALCONY	6.66 SQ M	72 SQ FT

Washing machine Integrated fridge freezer 4 ring hob C Cupboard U Utility room TV PS Privacy screen

Floor plans shown for Westwood House are approximate measurements only and are not to scale. Plot Locators and Elevations shown are not to scale. Exact layout and size may vary. All measurements may vary within a tolerance of 5%. The dimensions are not intended to be used for carpet sizes, appliance sizes or items of furniture. Floor plans not to scale and may vary from page to page.

2 BEDROOM APARTMENT

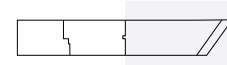
FIRST, THIRD AND FIFTH FLOORS
APARTMENTS 974, 994 & 1014



NORTH

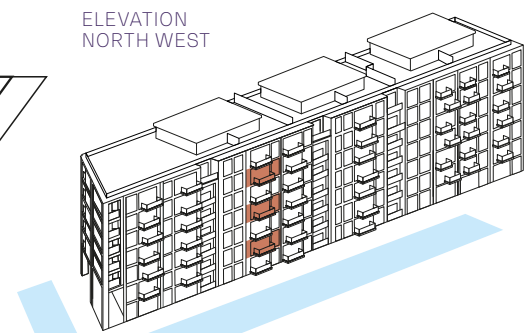
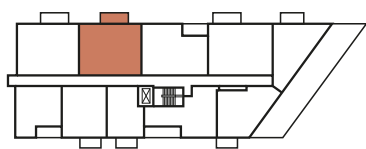


BLOCK G



G1 - FIRST FLOOR

ELEVATION NORTH WEST



TOTAL INTERNAL AREA	78.40 SQ M	844 SQ FT
LIVING / DINING	3.65M X 5.75M	12' 0" X 18' 10"
KITCHEN	3.38M X 2.16M	11' 1" X 7' 1"
MASTER BEDROOM	3.16M X 5.26M	10' 4" X 17' 3"
BEDROOM 2	2.82M X 4.12M	9' 3" X 13' 6"
BALCONY	6.83 SQ M	74 SQ FT

Washing machine Integrated fridge freezer 4 ring hob C Cupboard U Utility room TV PS Privacy screen

Floor plans shown for Westwood House are approximate measurements only and are not to scale. Plot Locators and Elevations shown are not to scale. Exact layout and size may vary. All measurements may vary within a tolerance of 5%. The dimensions are not intended to be used for carpet sizes, appliance sizes or items of furniture. Floor plans not to scale and may vary from page to page.

2 BEDROOM APARTMENT

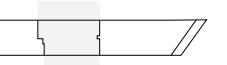
FIRST AND THIRD FLOORS
APARTMENTS 1037 & 1049



NORTH

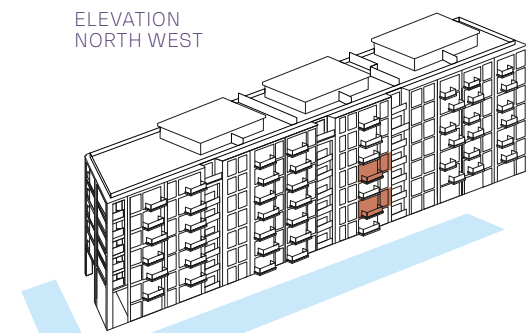
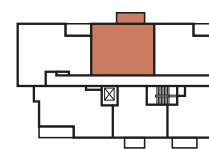


BLOCK G



G2 - FIRST FLOOR

ELEVATION NORTH WEST



TOTAL INTERNAL AREA	78.58 SQ M	846 SQ FT
LIVING / DINING	3.65M X 5.56M	12' 0" X 18' 3"
KITCHEN	3.38M X 2.35M	11' 1" X 7' 9"
MASTER BEDROOM	3.22M X 5.31M	10' 7" X 17' 5"
BEDROOM 2	2.75M X 4.07M	9' 0" X 13' 4"
BALCONY	6.83 SQ M	74 SQ FT

Washing machine Integrated fridge freezer 4 ring hob C Cupboard U Utility room TV PS Privacy screen

Floor plans shown for Westwood House are approximate measurements only and are not to scale. Plot Locators and Elevations shown are not to scale. Exact layout and size may vary. All measurements may vary within a tolerance of 5%. The dimensions are not intended to be used for carpet sizes, appliance sizes or items of furniture. Floor plans not to scale and may vary from page to page.

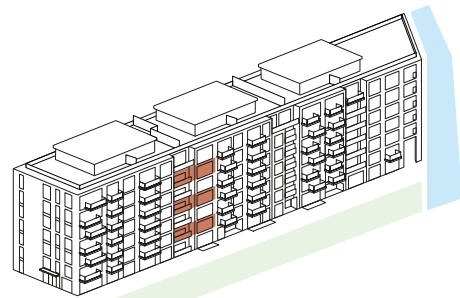
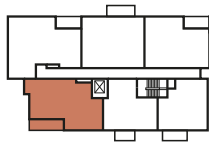
2 BEDROOM APARTMENT

FIRST, THIRD AND FIFTH FLOORS
APARTMENTS 1035, 1047 & 1059



G2 - FIRST FLOOR

ELEVATION
SOUTH EAST



TOTAL INTERNAL AREA	78.59 SQ M	846 SQ FT
LIVING / DINING	5.83M X 3.74M	19' 2" X 12' 3"
KITCHEN	3.40M X 2.60M	11' 2" X 8' 6"
MASTER BEDROOM	3.01M X 4.19M	9' 10" X 13' 9"
BEDROOM 2	2.75M X 4.10M	9' 0" X 13' 5"
BALCONY	8.56 SQ M	92 SQ FT

Washing machine Integrated fridge freezer 4 ring hob C Cupboard U Utility room TV PS Privacy screen

Floor plans shown for Westwood House are approximate measurements only and are not to scale. Plot Locators and Elevations shown are not to scale. Exact layout and size may vary. All measurements may vary within a tolerance of 5%. The dimensions are not intended to be used for carpet sizes, appliance sizes or items of furniture. Floor plans not to scale and may vary from page to page.

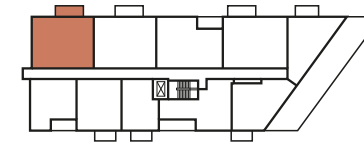
2 BEDROOM APARTMENT

FIRST, THIRD AND FIFTH FLOORS
APARTMENTS 973, 993 & 1013



G1 - FIRST FLOOR

ELEVATION
NORTH WEST



TOTAL INTERNAL AREA	78.77 SQ M	848 SQ FT
LIVING / DINING	3.66M X 5.31M	12' 0" X 17' 5"
KITCHEN	3.38M X 2.60M	11' 1" X 8' 6"
MASTER BEDROOM	3.16M X 5.31M	10' 4" X 17' 5"
BEDROOM 2	2.84M X 4.15M	9' 4" X 13' 7"
BALCONY	6.83 SQ M	74 SQ FT

Washing machine Integrated fridge freezer 4 ring hob C Cupboard U Utility room TV PS Privacy screen

Floor plans shown for Westwood House are approximate measurements only and are not to scale. Plot Locators and Elevations shown are not to scale. Exact layout and size may vary. All measurements may vary within a tolerance of 5%. The dimensions are not intended to be used for carpet sizes, appliance sizes or items of furniture. Floor plans not to scale and may vary from page to page.

2 BEDROOM APARTMENT

FIRST AND THIRD FLOORS
APARTMENTS 1036 & 1048

2 BEDROOM APARTMENT

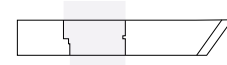
SECOND AND FOURTH FLOORS
APARTMENTS 1041 & 1053



NORTH



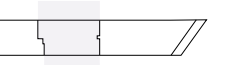
BLOCK G



NORTH

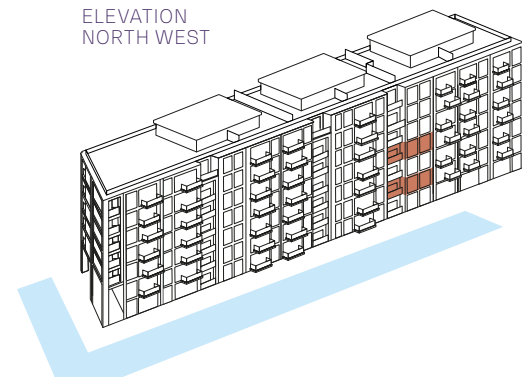
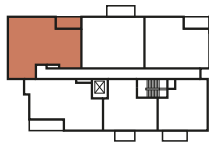


BLOCK G



G2 - FIRST FLOOR

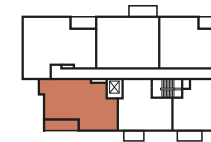
ELEVATION
NORTH WEST



TOTAL INTERNAL AREA	89.20 SQ M	960 SQ FT
LIVING / DINING	5.49M X 3.75M	18' 0" X 12' 3"
KITCHEN	3.45M X 2.22M	11' 4" X 7' 3"
MASTER BEDROOM	3.28M X 4.25M	10' 9" X 13' 11"
BEDROOM 2	3.43M X 4.53M	11' 3" X 14' 10"
BALCONY	7.04 SQ M	76 SQ FT

G2 - SECOND FLOOR

ELEVATION
SOUTH EAST



TOTAL INTERNAL AREA	78.36 SQ M	843 SQ FT
LIVING / DINING	5.83M X 3.74M	19' 2" X 12' 3"
KITCHEN	3.40M X 2.60M	11' 2" X 8' 6"
MASTER BEDROOM	3.01M X 4.19M	9' 10" X 13' 9"
BEDROOM 2	2.75M X 4.10M	9' 0" X 13' 5"
BALCONY	8.56 SQ M	92 SQ FT

Washing machine
 Integrated fridge freezer
 4 ring hob
 Cupboard
 Utility room
 TV
 Privacy screen

Floor plans shown for Westwood House are approximate measurements only and are not to scale. Plot Locators and Elevations shown are not to scale. Exact layout and size may vary. All measurements may vary within a tolerance of 5%. The dimensions are not intended to be used for carpet sizes, appliance sizes or items of furniture. Floor plans not to scale and may vary from page to page.

Washing machine
 Integrated fridge freezer
 4 ring hob
 Cupboard
 Utility room
 TV
 Privacy screen

Floor plans shown for Westwood House are approximate measurements only and are not to scale. Plot Locators and Elevations shown are not to scale. Exact layout and size may vary. All measurements may vary within a tolerance of 5%. The dimensions are not intended to be used for carpet sizes, appliance sizes or items of furniture. Floor plans not to scale and may vary from page to page.

2 BEDROOM APARTMENT

SECOND, THIRD, FOURTH, FIFTH AND SIXTH FLOORS
APARTMENTS 988, 998, 1008, 1018 & 1028

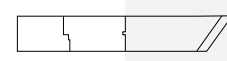


NORTH

View towards landscaped boulevard

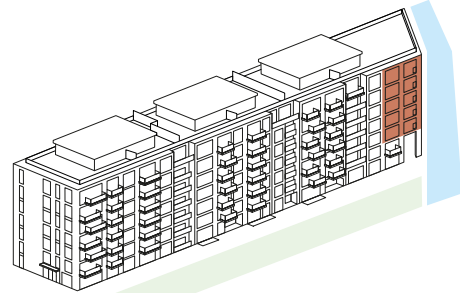
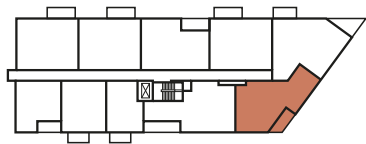


BLOCK G



G1 - SECOND FLOOR

ELEVATION SOUTH EAST



TOTAL INTERNAL AREA	80.29 SQ M	864 SQ FT
LIVING / DINING	3.78M X 7.46M	12' 5" X 24' 6"
KITCHEN	3.09M X 2.92M	10' 2" X 9' 7"
MASTER BEDROOM	3.71M X 3.35M	12' 2" X 11' 0"
BEDROOM 2	3.11M X 3.50M	10' 2" X 11' 6"
BALCONY	6.09 SQ M	66 SQ FT

Washing machine Integrated fridge freezer 4 ring hob C Cupboard U Utility room TV PS Privacy screen

Floor plans shown for Westwood House are approximate measurements only and are not to scale. Plot Locators and Elevations shown are not to scale. Exact layout and size may vary. All measurements may vary within a tolerance of 5%. The dimensions are not intended to be used for carpet sizes, appliance sizes or items of furniture. Floor plans not to scale and may vary from page to page.

2 BEDROOM APARTMENT

SECOND, THIRD AND FOURTH FLOORS
APARTMENTS 989, 999 & 1009

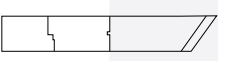


NORTH

View towards landscaped boulevard

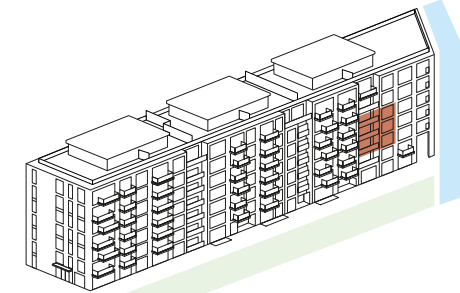


BLOCK G



G1 - SECOND FLOOR

ELEVATION SOUTH EAST



TOTAL INTERNAL AREA	82.01 SQ M	883 SQ FT
LIVING / DINING	6.01M X 3.12M	19' 9" X 10' 3"
KITCHEN	2.55M X 3.52M	8' 4" X 11' 7"
MASTER BEDROOM	3.00M X 5.40M	9' 10" X 17' 9"
BEDROOM 2	2.75M X 3.63M	9' 0" X 11' 11"
BALCONY	8.65 SQ M	93 SQ FT

Washing machine Integrated fridge freezer 4 ring hob C Cupboard U Utility room TV PS Privacy screen

Floor plans shown for Westwood House are approximate measurements only and are not to scale. Plot Locators and Elevations shown are not to scale. Exact layout and size may vary. All measurements may vary within a tolerance of 5%. The dimensions are not intended to be used for carpet sizes, appliance sizes or items of furniture. Floor plans not to scale and may vary from page to page.

2 BEDROOM APARTMENT

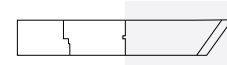
SECOND FLOOR
APARTMENT 987



NORTH

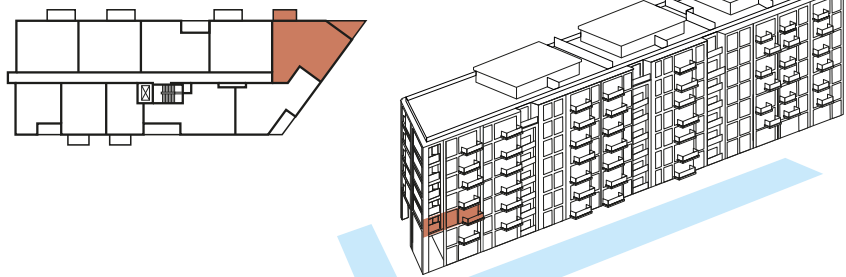


BLOCK G



G1 - SECOND FLOOR

ELEVATION
NORTH WEST



TOTAL INTERNAL AREA	88.90 SQ M	957 SQ FT
LIVING / DINING	2.74M X 6.21M	9' 0" X 20' 4"
KITCHEN	2.81M X 3.60M	9' 2" X 11' 10"
MASTER BEDROOM	3.00M X 5.35M	9' 10" X 17' 6"
BEDROOM 2	3.35M X 3.91M	11' 0" X 12' 10"
BALCONY	12.39 SQ M	133 SQ FT

Washing machine
 Integrated fridge freezer
 4 ring hob
 Cupboard
 Utility room
 TV
 PS Privacy screen

Floor plans shown for Westwood House are approximate measurements only and are not to scale. Plot Locators and Elevations shown are not to scale. Exact layout and size may vary. All measurements may vary within a tolerance of 5%. The dimensions are not intended to be used for carpet sizes, appliance sizes or items of furniture. Floor plans not to scale and may vary from page to page.

2 BEDROOM APARTMENT

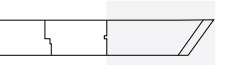
THIRD AND FIFTH FLOOR
APARTMENTS 997 & 1017



NORTH

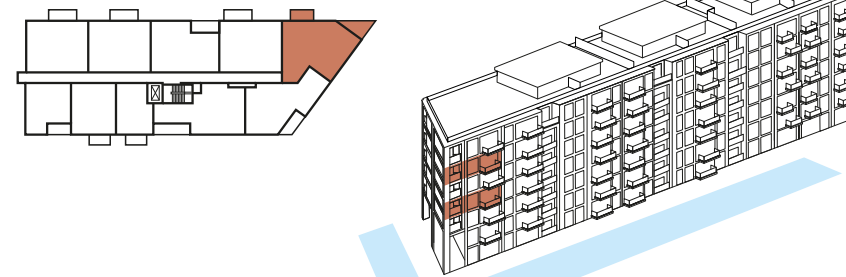


BLOCK G



G1 - THIRD FLOOR

ELEVATION
NORTH WEST



TOTAL INTERNAL AREA	88.89 SQ M	957 SQ FT
LIVING / DINING	2.75M X 6.21M	9' 0" X 20' 4"
KITCHEN	2.80M X 3.60M	9' 2" X 11' 10"
MASTER BEDROOM	3.00M X 5.35M	9' 10" X 17' 6"
BEDROOM 2	3.35M X 3.91M	11' 0" X 12' 10"
BALCONY	12.39 SQ M	133 SQ FT

Washing machine
 Integrated fridge freezer
 4 ring hob
 Cupboard
 Utility room
 TV
 PS Privacy screen

Floor plans shown for Westwood House are approximate measurements only and are not to scale. Plot Locators and Elevations shown are not to scale. Exact layout and size may vary. All measurements may vary within a tolerance of 5%. The dimensions are not intended to be used for carpet sizes, appliance sizes or items of furniture. Floor plans not to scale and may vary from page to page.

2 BEDROOM APARTMENT

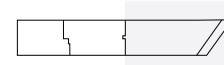
FOURTH AND SIXTH FLOORS
APARTMENTS 1007 & 1027



NORTH

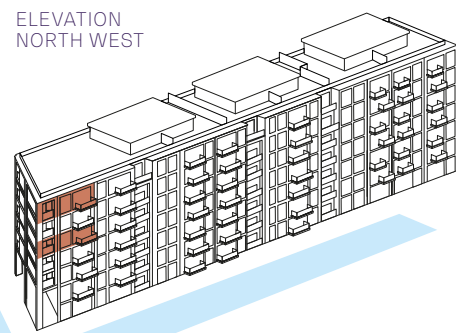
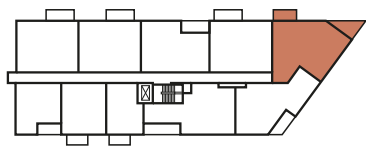


BLOCK G



G1 - FOURTH FLOOR

ELEVATION
NORTH WEST



TOTAL INTERNAL AREA	88.95 SQ M	957 SQ FT
LIVING / DINING	2.75M X 6.21M	9' 0" X 20' 4"
KITCHEN	2.79M X 3.60M	9' 2" X 11' 10"
MASTER BEDROOM	3.00M X 5.35M	9' 10" X 17' 6"
BEDROOM 2	3.35M X 3.91M	11' 0" X 12' 10"
BALCONY	12.39 SQ M	133 SQ FT

Washing machine Integrated fridge freezer 4 ring hob C Cupboard U Utility room TV PS Privacy screen

Floor plans shown for Westwood House are approximate measurements only and are not to scale. Plot Locators and Elevations shown are not to scale. Exact layout and size may vary. All measurements may vary within a tolerance of 5%. The dimensions are not intended to be used for carpet sizes, appliance sizes or items of furniture. Floor plans not to scale and may vary from page to page.

2 BEDROOM APARTMENT

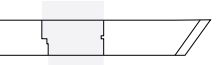
FIFTH FLOOR
APARTMENT 1061



NORTH

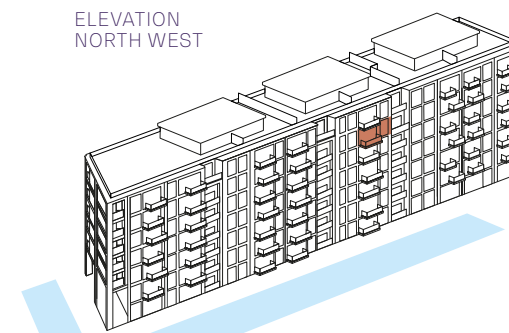
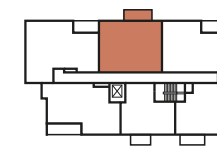


BLOCK G



G2 - FIFTH FLOOR

ELEVATION
NORTH WEST



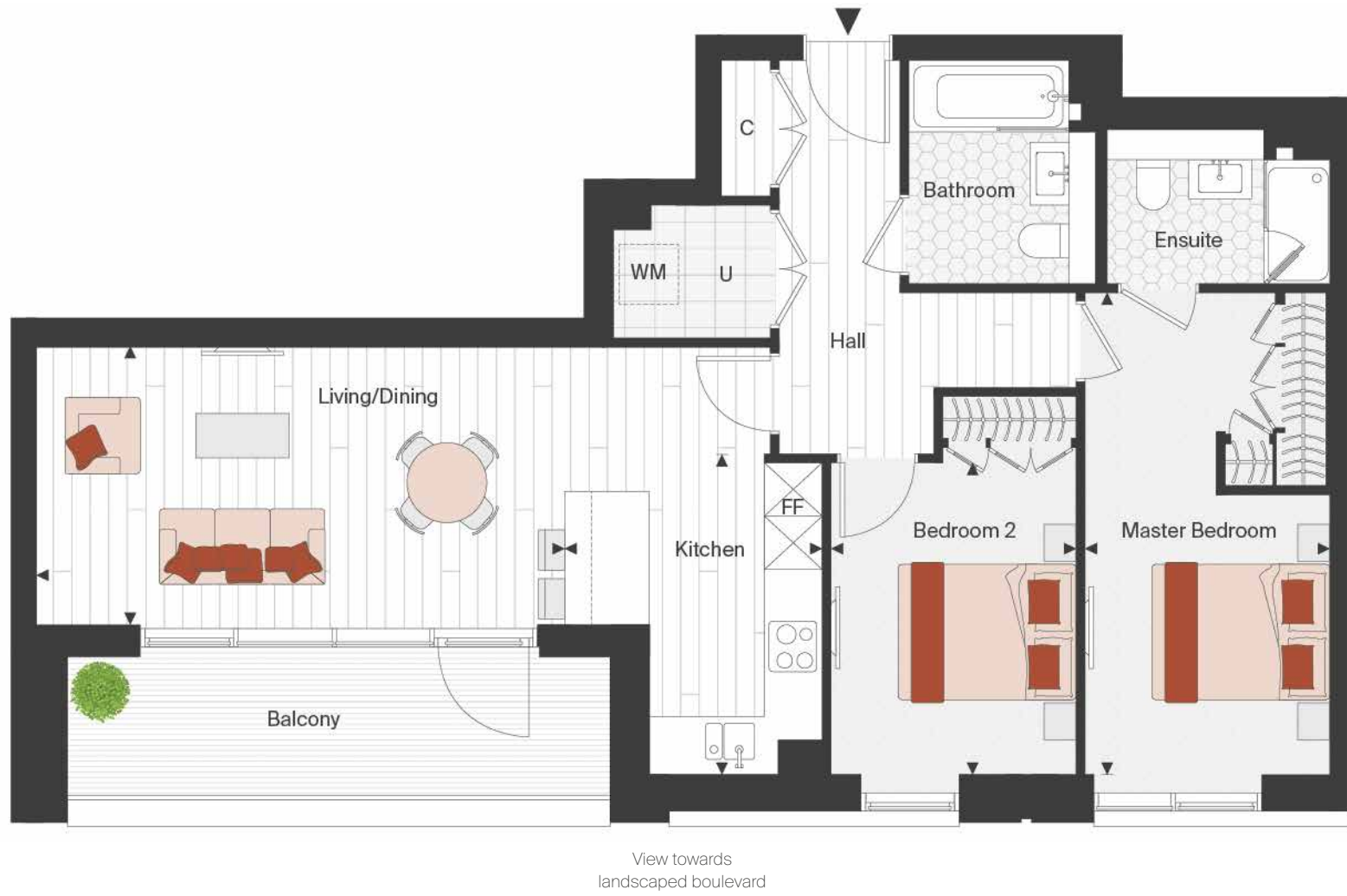
TOTAL INTERNAL AREA	77.23 SQ M	831 SQ FT
LIVING / DINING	3.38M X 5.56M	11' 1" X 18' 3"
KITCHEN	3.38M X 2.35M	11' 1" X 7' 9"
MASTER BEDROOM	2.77M X 5.31M	9' 1" X 17' 5"
BEDROOM 2	2.74M X 3.47M	9' 0" X 11' 5"
BALCONY	6.83 SQ M	74 SQ FT

Washing machine Integrated fridge freezer 4 ring hob C Cupboard U Utility room TV PS Privacy screen

Floor plans shown for Westwood House are approximate measurements only and are not to scale. Plot Locators and Elevations shown are not to scale. Exact layout and size may vary. All measurements may vary within a tolerance of 5%. The dimensions are not intended to be used for carpet sizes, appliance sizes or items of furniture. Floor plans not to scale and may vary from page to page.

2 BEDROOM APARTMENT

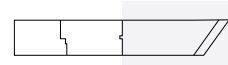
FIFTH FLOOR
APARTMENT 1019



NORTH

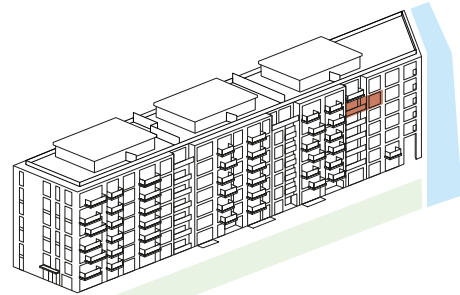
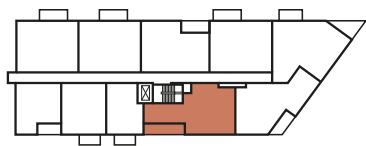


BLOCK G



G1 - FIFTH FLOOR

ELEVATION
SOUTH EAST



TOTAL INTERNAL AREA	80.96 SQ M	871 SQ FT
LIVING / DINING	5.92M X 3.12M	19' 5" X 10' 3"
KITCHEN	2.89M X 3.59M	9' 6" X 11' 9"
MASTER BEDROOM	2.75M X 5.40M	9' 0" X 17' 9"
BEDROOM 2	2.75M X 3.49M	9' 0" X 11' 6"
BALCONY	9.73 SQ M	105 SQ FT

Washing machine
 Integrated fridge freezer
 4 ring hob
 Cupboard
 Utility room
 TV
 Privacy screen

Floor plans shown for Westwood House are approximate measurements only and are not to scale. Plot Locators and Elevations shown are not to scale. Exact layout and size may vary. All measurements may vary within a tolerance of 5%. The dimensions are not intended to be used for carpet sizes, appliance sizes or items of furniture. Floor plans not to scale and may vary from page to page.

2 BEDROOM APARTMENT

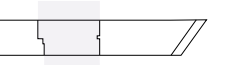
FIFTH FLOOR
APARTMENT 1060



NORTH

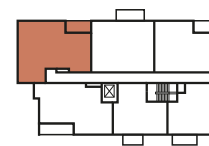


BLOCK G



G2 - FIFTH FLOOR

ELEVATION
NORTH WEST



TOTAL INTERNAL AREA	88.32 SQ M	951 SQ FT
LIVING / DINING	5.49M X 3.78M	18' 0" X 12' 5"
KITCHEN	3.45M X 2.22M	11' 4" X 7' 3"
MASTER BEDROOM	3.28M X 4.25M	10' 9" X 13' 11"
BEDROOM 2	2.75M X 4.53M	9' 0" X 14' 10"
BALCONY	8.90 SQ M	96 SQ FT

Washing machine
 Integrated fridge freezer
 4 ring hob
 Cupboard
 Utility room
 TV
 Privacy screen

Floor plans shown for Westwood House are approximate measurements only and are not to scale. Plot Locators and Elevations shown are not to scale. Exact layout and size may vary. All measurements may vary within a tolerance of 5%. The dimensions are not intended to be used for carpet sizes, appliance sizes or items of furniture. Floor plans not to scale and may vary from page to page.

2 BEDROOM APARTMENT

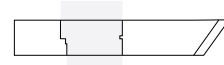
SIXTH FLOOR
APARTMENT 1066



NORTH

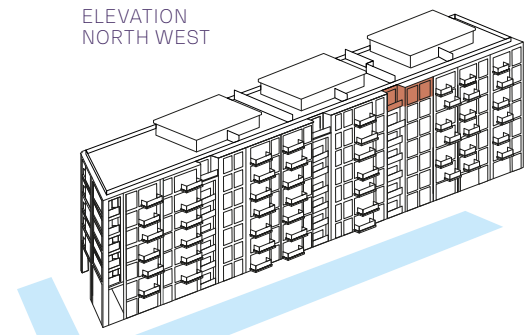
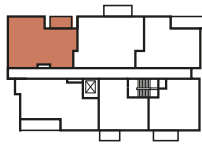


BLOCK G



G2 - SIXTH FLOOR

ELEVATION
NORTH WEST



TOTAL INTERNAL AREA	72.58 SQ M	781 SQ FT
LIVING / DINING	5.15M X 3.22M	16' 11" X 10' 7"
KITCHEN	3.44M X 2.78M	11' 4" X 9' 1"
MASTER BEDROOM	2.75M X 3.63M	9' 0" X 11' 11"
BEDROOM 2	2.65M X 3.63M	8' 8" X 11' 11"
BALCONY	6.07 SQ M	65 SQ FT

Washing machine Integrated fridge freezer 4 ring hob C Cupboard U Utility room TV PS Privacy screen

Floor plans shown for Westwood House are approximate measurements only and are not to scale. Plot Locators and Elevations shown are not to scale. Exact layout and size may vary. All measurements may vary within a tolerance of 5%. The dimensions are not intended to be used for carpet sizes, appliance sizes or items of furniture. Floor plans not to scale and may vary from page to page.

2 BEDROOM APARTMENT

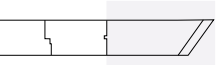
SIXTH FLOOR
APARTMENT 1023



NORTH

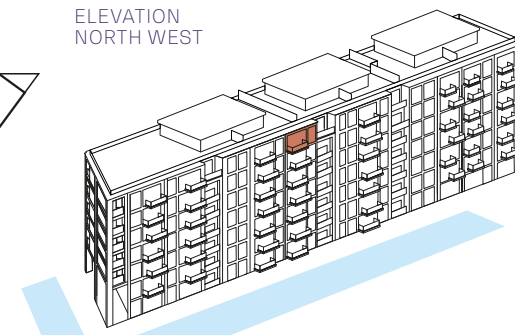
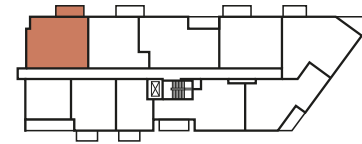


BLOCK G



G1 - SIXTH FLOOR

ELEVATION
NORTH WEST



TOTAL INTERNAL AREA	77.30 SQ M	832 SQ FT
LIVING / DINING	3.34M X 5.74M	11' 0" X 18' 10"
KITCHEN	3.34M X 2.17M	11' 0" X 7' 1"
MASTER BEDROOM	2.76M X 5.31M	9' 1" X 17' 5"
BEDROOM 2	2.75M X 4.15M	9' 0" X 13' 7"
BALCONY	6.66 SQ M	72 SQ FT

Washing machine Integrated fridge freezer 4 ring hob C Cupboard U Utility room TV PS Privacy screen

Floor plans shown for Westwood House are approximate measurements only and are not to scale. Plot Locators and Elevations shown are not to scale. Exact layout and size may vary. All measurements may vary within a tolerance of 5%. The dimensions are not intended to be used for carpet sizes, appliance sizes or items of furniture. Floor plans not to scale and may vary from page to page.

2 BEDROOM APARTMENT

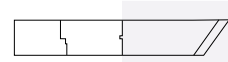
SIXTH FLOOR
APARTMENT 1026



NORTH

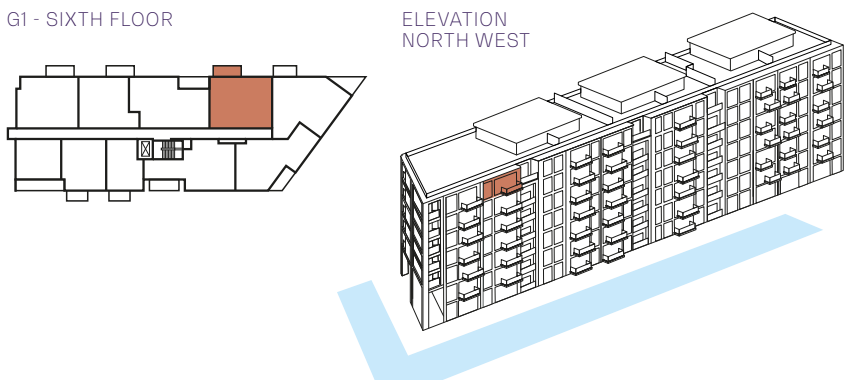


BLOCK G



G1 - SIXTH FLOOR

ELEVATION
NORTH WEST



TOTAL INTERNAL AREA	77.67 SQ M	836 SQ FT
LIVING / DINING	3.66M X 5.31M	12' 0" X 17' 5"
KITCHEN	3.39M X 2.60M	11' 1" X 8' 6"
MASTER BEDROOM	3.16M X 5.16M	10' 4" X 16' 11"
BEDROOM 2	2.81M X 4.01M	9' 3" X 13' 2"
BALCONY	6.66 SQ M	72 SQ FT

Washing machine Integrated fridge freezer 4 ring hob C Cupboard U Utility room TV PS Privacy screen

Floor plans shown for Westwood House are approximate measurements only and are not to scale. Plot Locators and Elevations shown are not to scale. Exact layout and size may vary. All measurements may vary within a tolerance of 5%. The dimensions are not intended to be used for carpet sizes, appliance sizes or items of furniture. Floor plans not to scale and may vary from page to page.

2 BEDROOM APARTMENT

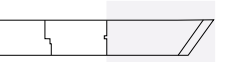
SIXTH FLOOR
APARTMENT 1029



NORTH

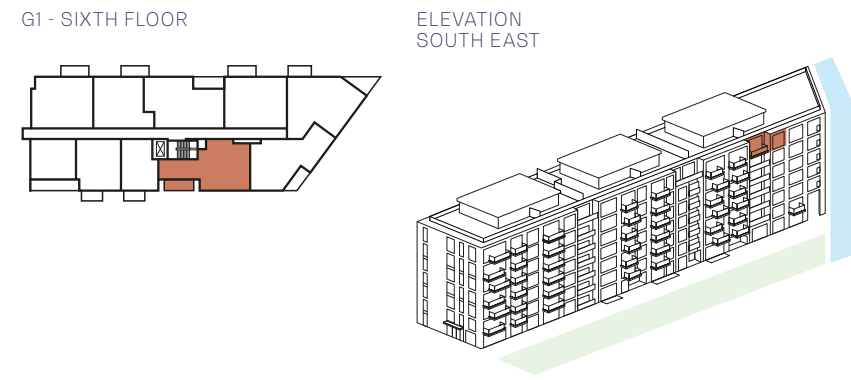


BLOCK G



G1 - SIXTH FLOOR

ELEVATION
SOUTH EAST



TOTAL INTERNAL AREA	80.54 SQ M	867 SQ FT
LIVING / DINING	5.92M X 3.12M	19' 5" X 10' 3"
KITCHEN	2.89M X 3.59M	9' 6" X 11' 9"
MASTER BEDROOM	2.75M X 5.40M	9' 0" X 17' 9"
BEDROOM 2	2.75M X 3.49M	9' 0" X 11' 6"
BALCONY	7.25 SQ M	78 SQ FT

Washing machine Integrated fridge freezer 4 ring hob C Cupboard U Utility room TV PS Privacy screen

Floor plans shown for Westwood House are approximate measurements only and are not to scale. Plot Locators and Elevations shown are not to scale. Exact layout and size may vary. All measurements may vary within a tolerance of 5%. The dimensions are not intended to be used for carpet sizes, appliance sizes or items of furniture. Floor plans not to scale and may vary from page to page.

2 BEDROOM APARTMENT

SIXTH FLOOR
APARTMENT 1065

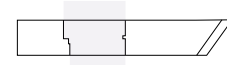


View towards
landscaped boulevard

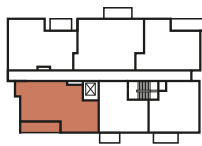
NORTH



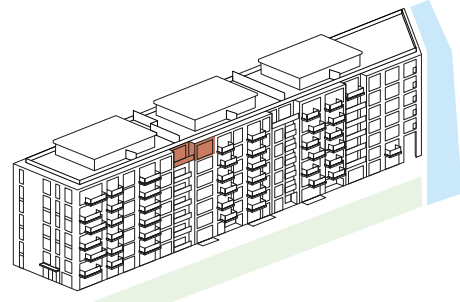
BLOCK G



G2 - SIXTH FLOOR



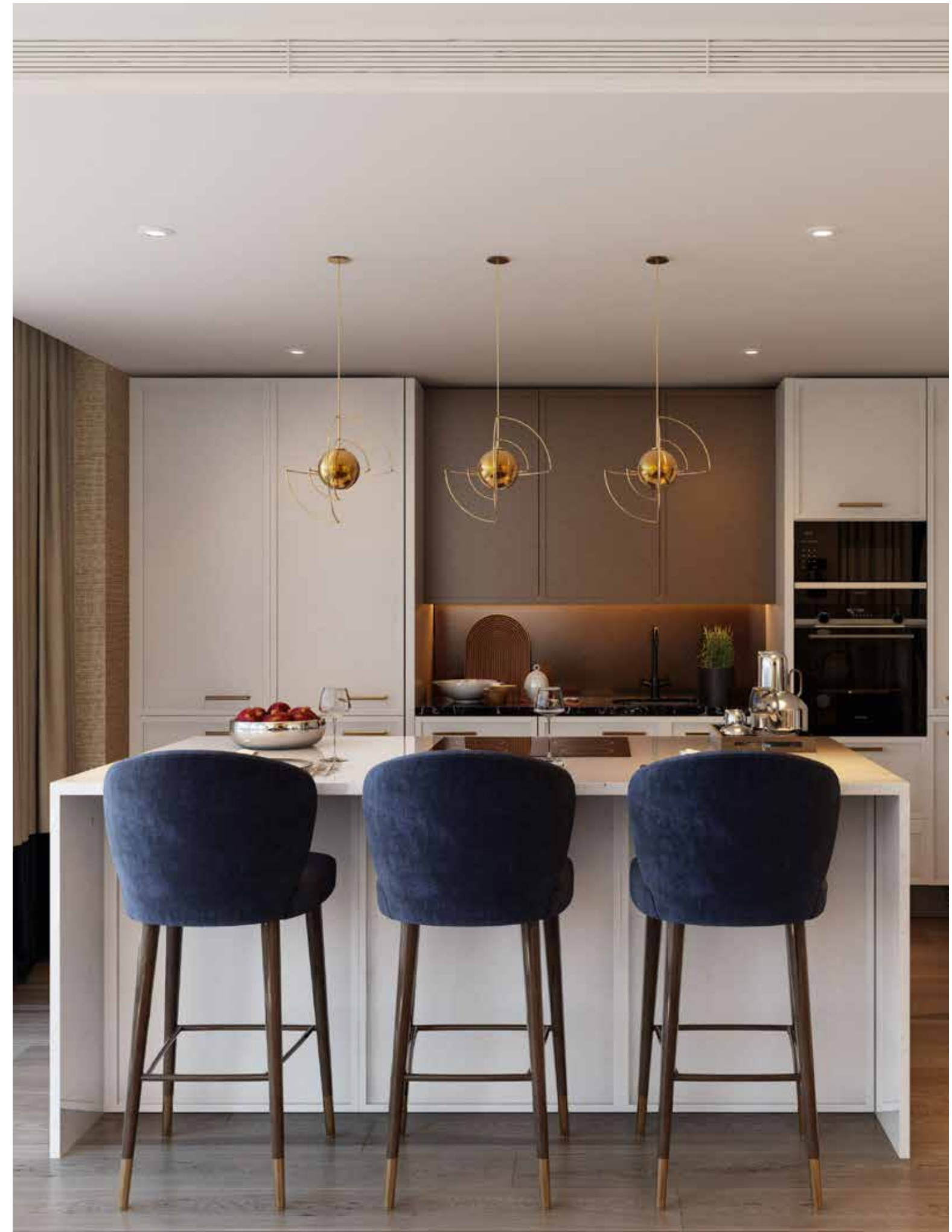
ELEVATION
SOUTH EAST



	TOTAL INTERNAL AREA	81.04 SQ M	872 SQ FT
LIVING / DINING	5.89M X 3.74M	19' 4" X 12' 3"	
KITCHEN	3.40M X 2.60M	11' 2" X 8' 6"	
MASTER BEDROOM	2.94M X 4.19M	9' 8" X 13' 9"	
BEDROOM 2	2.75M X 4.16M	9' 0" X 13' 8"	
BALCONY	9.73 SQ M	105 SQ FT	

Washing machine
 Integrated fridge freezer
 4 ring hob
 Cupboard
 Utility room
 TV
 Privacy screen

Floor plans shown for Westwood House are approximate measurements only and are not to scale. Plot Locators and Elevations shown are not to scale. Exact layout and size may vary. All measurements may vary within a tolerance of 5%. The dimensions are not intended to be used for carpet sizes, appliance sizes or items of furniture. Floor plans not to scale and may vary from page to page.



STANDARD APARTMENT SPECIFICATION



GENERAL SPECIFICATION

Comfort Cooling and warm air space heating to Living Room and Bedrooms¹
 Aluminium powder coated external doors and windows
 Engineered timber flooring to Living Room, Kitchen and Hallway
 Carpet to Bedrooms²
 Painted and fluted glass wardrobe doors
 Feature painted skirting and architraves
 Painted internal doors with feature routing detail
 Bronze effect ironmongery
 Balcony or Terrace
 Ten year warranty from date of legal completion
 999 year lease from 1 June 2010

KITCHEN

Fully integrated kitchen
 Composite stone worktop
 Frosted glass splashback
 Modern shaker style painted kitchen doors
 Bronze effect door handles
 Stainless steel recessed sink
 Integrated Miele electronic oven
 Integrated Miele hob
 Integrated extractor fan (re-circulating)
 Integrated Miele microwave
 Integrated Siemens fridge / freezer
 Integrated Siemens dishwasher
 Deck mounted mixer tap in black finish
 Washer / dryer³
 Feature lighting below high level cupboards
 Integrated wine cooler
 Feature utensil rail
 Feature bronze effect shelving unit⁴

BATHROOM AND EN-SUITES

Bespoke brass effect mirrored vanity units
 Feature tiles to vanity wall
 Feature deck mounted basin
 Brass effect taps & accessories
 Brass effect overhead shower and hand held shower in shower enclosure
 Brass effect framed glass shower and bath screen / enclosure
 Porcelain floor and wall tiles
 Wall mounted WC

ELECTRICAL

Down lighters to all rooms
 Feature wall lights to En-Suite and Bathrooms
 Bronze effect light switches
 Bronze effect sockets to Kitchen
 White plastic sockets elsewhere
 TV provision to Living Room and Bedrooms
 BT Fibre optic and Hyperoptic broadband to hall cupboard with LAN connections to Living Room and Master Bedroom
 Electrical underfloor heating to Bathrooms and En-suites
 Brass effect Heated towel rail in En-suites and Bathroom

SECURITY

Multi-point high security door locking system to entrance door with spy hole
 24 hour concierge⁵
 CCTV security system to car park, entrance lobby and development⁵
 Video entry phone system connected to front entrance door panel and concierge
 Smoke detection to all apartments and sprinkler system to certain apartments⁶

RESIDENT'S FACILITIES

Exclusive access to The Spa with swimming pool, sauna, steam room, treatment room, gymnasium and wi-fi enabled resident's lounge⁷
 Landscaped park, waterways and dockside plaza⁸
 Interior designed entrance lobbies and corridors⁹

1. The comfort cooling system is designed to provide an ambient temperature within the apartment for the majority of external temperatures. This may not be achieved in extreme temperature conditions. The same system that provides the comfort cooling also provides space heating.
2. Apart from Manhattans.
3. Washer / dryer located in Hallway Cupboard.
4. Provision of feature shelving unit is subject to layouts and size may vary.
5. Payable via the service charge.
6. Sprinklers provided only to apartments with open plan and long travel distances.
7. Membership of The Spa is payable via the service charge. Additional charges may be payable for select services.
8. Maintenance payable via the service charge to be phased in over the course of the development.
9. Maintenance payable via the service charge.