



65 Shutewater Orchard Taunton TA1 5FA

£240,000

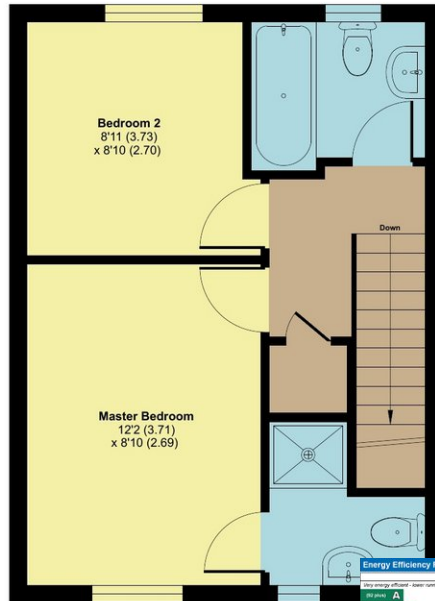
robert
cooney

65 Shutewater Orchard, Bishops Hull, Taunton, TA1 5FA

Approximate Area = 644 sq ft / 59.8 sq m
For identification only - Not to scale



GROUND FLOOR



FIRST FLOOR

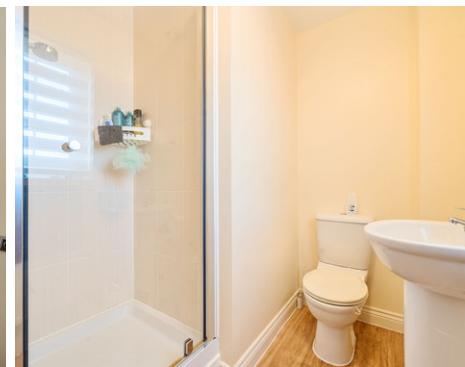


Features

- Entrance Hall
- Living Room with French doors to garden
- Fitted Kitchen
- Cloakroom
- Master Bedroom with Ensuite Shower Room
- Further double Bedroom
- Family Bathroom
- Enclosed South facing garden to rear
- Allocated parking for 2 cars to the rear
- Gas central heating
- Double glazing
- Council tax band B
- What3words: [///fact.liner.cared](https://www.what3words.com/#!/fact.liner.cared)

Floor plan produced in accordance with RICS Property Measurement 2nd Edition, Incorporating International Property Measurement Standards (IPMS2 Residential). © nrichcom 2024. Produced for Robert Cooney. REF: 1217837

An immaculately presented 2 double bed roomed mid-terraced house situated in the popular village of Bishops Hull with enclosed South facing garden to rear and allocated parking for 2 cars. No onward chain.



Viewing strictly through the selling agents:

Robert Cooney

Corporation Street, Taunton, Somerset TA1 4AW

Telephone: 01823 230230

E-mail: taunton@robertcooney.co.uk

Website: robertcooney.co.uk

**robert
cooney**

For clarification, we wish to inform prospective purchasers that: these particulars are set out as a general outline only for the guidance of intended purchasers, and do not constitute, nor constitute part of, an offer or contract; all descriptions, dimensions, references to condition and necessary permission for use and occupation, and other details, are given without responsibility and any intending purchasers should not rely on them as statements or representation of fact, but must satisfy themselves by inspection or otherwise as to the correctness of each of them; no person in the employment of Robert Cooney has any authority to make or give any representation or warranty whatever in relation to this property; we have not carried out a detailed survey nor tested the services, appliances and specific fittings.