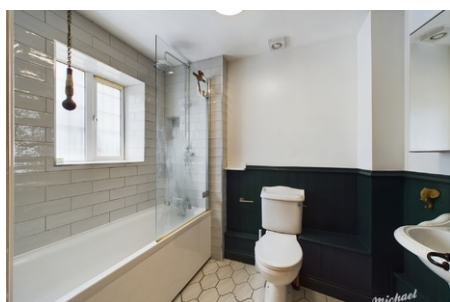


**14 Church Street, Leighton
 Buzzard, Bedfordshire LU7**

£1,300 PCM



Set in the heart of Wing, Michael Anthony are delighted to present to the market this characterful two bedroom terraced cottage. The accommodation comprises spacious lounge with feature fireplace, dining area and generous kitchen with island worktop. Furthermore to the rear is a modern bathroom and hallway leading out to courtyard garden and a separate low maintenance garden fenced off. Upstairs are two double bedrooms, with the extensive main bedroom set at the front. To the front of the property is on road parking.



- 360 VIRTUAL TOUR
- TERRACED COTTAGE
- FITTED KITCHEN
- SEPARATE DINING AREA
- MODERN BATHROOM
- GAS CENTRAL HEATING