



MEDINA PARK FOLLY LANE WHIPPINGHAM, PO32 6LZ

£85,000

Situated on Medina Park, Folly Lane, this Linder Lodge is offered as CHAIN FREE. The park is for the overs 50's and is fully residential and provides easy comfortable living.

W | Williams
SALES & LETTINGS

MEDINA PARK FOLLY LANE

- 1 / 2 bedroom Park Home • Lindera Lodge 36 x 10
- Nicely presented • Fully residential park
- For the over 50's • Chain Free



The accommodation with approximate measurements

Double glazed door to:

Hallway

Small cupboard housing consumer unit. Doors off to:

Lounge 2.92 x 2.88 (9'6" x 9'5")

Dual aspect double glazed windows. Double glazed door to side aspect. Radiator. Electric fire with fire surround.

Kitchen / Diner 2.94 x 2.92 (9'7" x 9'6")

Fitted with matching wall, base and drawer units. 4 burner hob with extractor over. Single oven. Stainless steel sink. Built in fridge / freezer. Built in Hotpoint washer/dryer. Double aspect windows to both side aspects. Radiator. Room for table and chairs.

Bedroom 2.93 x 2.27 (9'7" x 7'5")

Double glazed window. Radiator. Built in wardrobes and vanity unit.

Study / Small bedroom 2.13 x 1.25 (6'11" x 4'1")

Double glazed window. Radiator. Single wardrobe.

Outside

Rear: laid to lawn with patio area.

Front: Parking for 1 car

Additional information

Tenure: Licence and fully residential

Council tax band: "A"

Pitch fee: £247.88 per month

Sewerage charge: tbc

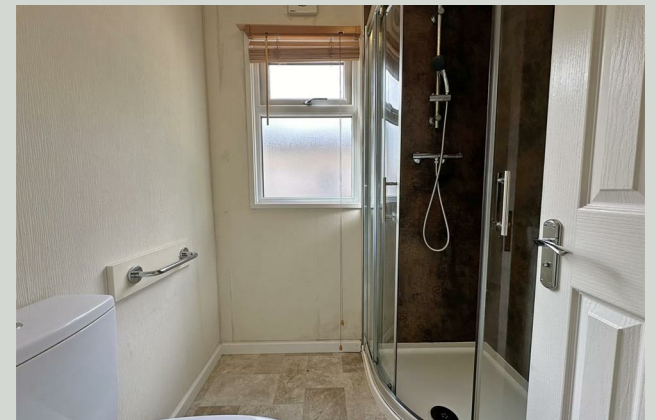
Environmental charge: £11.56 per year

Potential purchasers must be over the age of 50 years old. No dogs allowed on the park.

On re-sale : 10% of the sale price needs to be paid back to the park owners

Management Company: LT Management

MEDINA PARK FOLLY LANE





W | Williams

SALES & LETTINGS

Williams Estate Agents
41 High Street
Wootton Bridge
Isle Of Wight
PO33 4LU

01983 883333
sales@williamsisleofwight.co.uk
lettings@williamsisleofwight.co.uk
www.williamsisleofwight.co.uk

Agents Note: Whilst every care has been taken to prepare these particulars, they are for guidance purposes only. All measurements are approximate and are for general guidance purposes only and whilst every care has been taken to ensure their accuracy, they should not be relied upon and potential buyers/tenants are advised to recheck the measurements