

Head Office:
Dixon Kelley Estate Agents
1 Penn Court
Station Road, West Moors
Dorset. BH22 0JJ

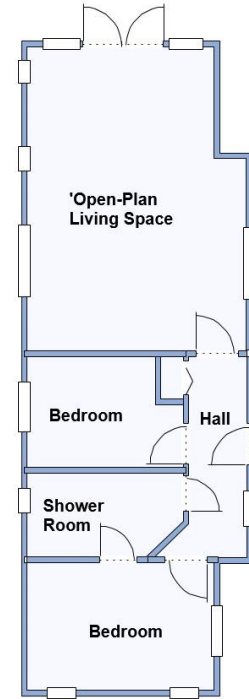
DORSET PARK HOMES

DRAFT

www.dorsetparkhomes.com

Telephone: 01202 877511

12a Worley Way, Lone Pine Park, Lone Pine Drive, Ferndown. BH22 8NL



This drawing has been prepared for diagrammatic purposes only. Not to scale.

2-Bedroom Park Home - approx 40'x14'max

Accommodation & approximate room dimensions:

- Stylish Interior Design with Vaulted Ceilings
- Entrance Hall: Cloaks cupboard
- 'Open-Plan' Living Space: approx 18' x 13'max. Range of floor and wall cupboards. Built-in oven, microwave, gas hob & extractor fan. Integrated dishwasher, washing machine and fridge/freezer. Cupboard housing gas boiler. Ample space for dining suite. Lounge area with doors to Sun Terrace
- Bedroom 1: approx 11' x 7'7". Built-in wardrobe
- Bedroom 2: approx 9'8" x 6'7". Built-in wardrobe
- Luxury Shower Room
- Gas Central Heating & PVCu Double-Glazing
- Air Conditioning Unit & LED Lighting
- Carpets, Blinds & Curtains
- Parking on Plot
- Large Raised Sun Terrace with heathland view
- Substantial Concrete Shed
- Age Restriction 55+ Pets Considered
- Quality Residential Park in exclusive area near to Ferndown Golf Club & access to heathland walks.

Large Sun Terrace



Pitch Fee: approx £801.48 per quarter
Subject to Annual Review
Council Tax Band: 'A'

Tenure: 1983 Mobile Homes Act Agreement

Price: £279,950

VIEWING STRICTLY BY APPOINTMENT WITH THE VENDOR'S AGENT Dorset Park Homes 01202 877511

IMPORTANT NOTE: These particulars are believed to be correct but their accuracy is not guaranteed. They do not form part of any contract. Nothing in these particulars shall be deemed to be a statement that the property is in good structural condition or otherwise, nor that any of the services, appliances, equipment or facilities are in good working order or have been tested. Purchasers should satisfy themselves on such matters prior to purchase Ref.W04847

The recommended specialist in Park Home sales
Partner: Simon Dixon

