

Head Office:
Dixon Kelley Estate Agents
1 Penn Court
Station Road, West Moors
Dorset. BH22 0JJ

DORSET PARK HOMES

DRAFT

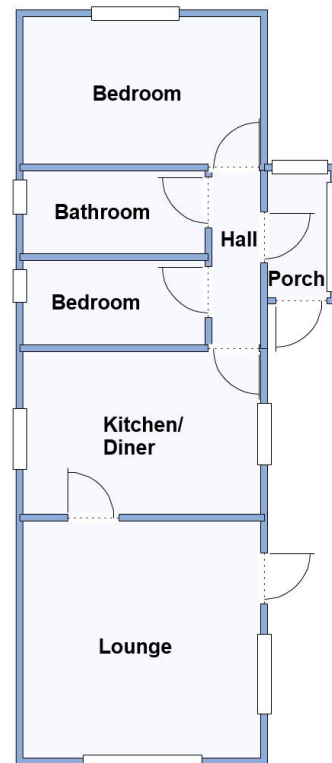
www.dorsetparkhomes.com

Telephone: 01202 877511

40 Stour Park, New Road, Bournemouth, Dorset. BH10 7DE



Bright Park Home with Delightful Garden



This drawing has been prepared for diagrammatic purpose only. Not to scale

2 Bedroom Park Home approx 36' x 12'

Accommodation & approximate room dimensions:

- Wonderland Park Home circa 1987
- Enclosed Entrance Porch
- Hall: Cloaks cupboard
- Kitchen/Diner: approx 11'8" x 8'. Range of base & wall units. Space for cooker & tall fridge/freezer. Airing cupboard. Ample space for dining suite.
- Lounge: approx 11'8" x 11'7". Feature fireplace with gas fire & back boiler. Fitted storage cupboards & display shelving.
- Bedroom 1: approx 11'8" x 7'3". Fitted wardrobes.
- Bedroom 2: approx 9'x 4'2". Fitted wardrobe.
- Bathroom: Panelled bath, wash basin & WC.
- Gas Central Heating (system untested)
- PVCu Double-Glazing
- Parking on Plot.
- Delightful Sunny Garden with Shed & Greenhouse
- Age restriction 60+. No Pets
- Well maintained Residential Park close to amenities & with easy access to Bournemouth & Poole.
- No Chain!

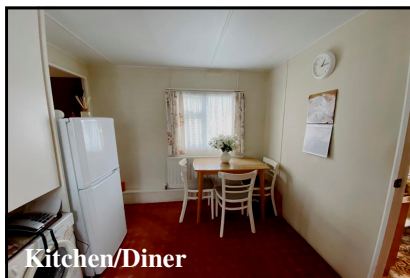
Close to Amenities



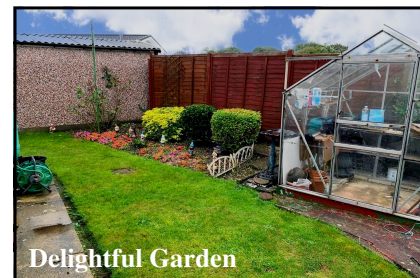
Kitchen/Diner



Lounge



Kitchen/Diner



Delightful Garden

Pitch Fee: Approx £184.40 per month plus £9 Water per month
Subject to Annual Review
Council Tax Band: 'A' **Tenure: 1983 Mobile Homes Act Agreement**

Price £80,000

VIEWING STRICTLY BY APPOINTMENT WITH THE VENDOR'S AGENT Dorset Park Homes 01202 877511

IMPORTANT NOTE: These particulars are believed to be correct but their accuracy is not guaranteed. They do not form part of any contract. Nothing in these particulars shall be deemed to be a statement that the property is in good structural condition or otherwise, nor that any of the services, appliances, equipment or facilities are in good working order or have been tested. Purchasers should satisfy themselves on such matters prior to purchase Ref.W04897

The recommended specialist in Park Home sales
Proprietor: Simon Dixon

