

Head Office:
Dixon Kelley Estate Agents
1 Penn Court
Station Road, West Moors
Dorset. BH22 0JJ

DORSET PARK HOMES

DRAFT

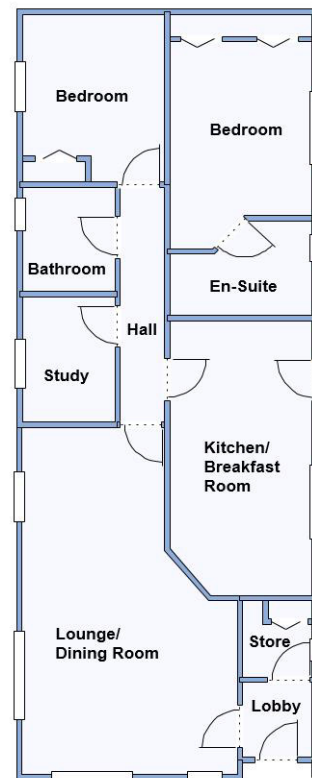
www.dorsetparkhomes.com

Telephone: 01202 877511

1b Pinehurst Park, West Moors, Dorset. BH22 0BW



Spacious Park Home with 16' Kitchen/Breakfast Room & Study



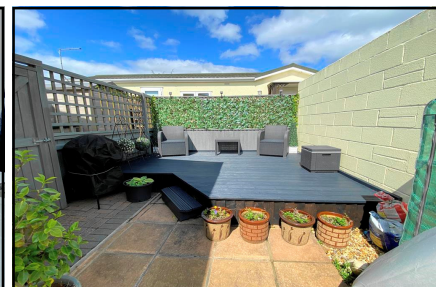
This drawing has been prepared for diagrammatic purpose only. Not to scale

2 Bedroom Park Home approx 46' x 18'

Accommodation & approximate room dimensions:

- Prestige 'concerto' circa 2014
- Entrance Lobby: Large Cloaks/Storage cupboard. Cupboard house gas boiler.
- Lounge/Dining: approx 20'6" x 12'6". Feature marble fireplace with electric fire.
- Kitchen/Breakfast Room: approx 16'6" x 8'4". Range of floor and wall cupboards. Built-in oven & hob with extractor fan over. Integrated fridge/freezer, washing machine & dishwasher. Ample space for breakfast table. LED spot lights. Door to garden.
- Inner Hall: Linen cupboard. Hatch to roof space.
- Bedroom 1: approx 14' x 8'4" max. Built-in wardrobes.
- En-Suite Shower Room
- Bedroom 2: approx 10'1" x 8'4". Built-in wardrobe.
- Bathroom: Panelled bath. Pedestal wash basin & WC.
- Gas Central Heating (system untested)
- PVCu Double-Glazing
- Parking on Plot for 2 cars.
- Delightful Patio Garden with raised Deck.
- Age Restriction 45+ Pets Considered
- Popular Residential Park near to local amenities & close to protected nature walks.

Beautifully Presented



Price £235,000

Pitch Fee: approx £262.38 per month including water

Subject to Annual Review

Council Tax Band: 'A'

Tenure: 1983 Mobile Homes Act Agreement

VIEWING STRICTLY BY APPOINTMENT WITH THE VENDOR'S AGENT Dorset Park Homes 01202 877511

IMPORTANT NOTE: These particulars are believed to be correct but their accuracy is not guaranteed. They do not form part of any contract. Nothing in these particulars shall be deemed to be a statement that the property is in good structural condition or otherwise, nor that any of the services, appliances, equipment or facilities are in good working order or have been tested. Purchasers should satisfy themselves on such matters prior to purchase Ref.W04791

The recommended specialist in Park Home sales
Proprietor: Simon Dixon

