

Head Office:
Dixon Kelley Estate Agents
1 Penn Court
Station Road, West Moors
Dorset. BH22 0JJ

DORSET PARK HOMES

DRAFT

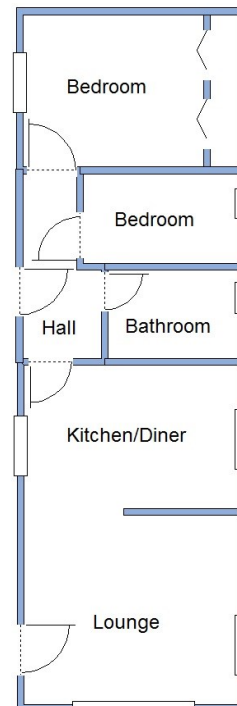
www.dorsetparkhomes.com

Telephone: 01202 877511

92a Gladelands Park, Ringwood Road, Ferndown, Dorset. BH22 9BW



Beautifully Presented Park Home



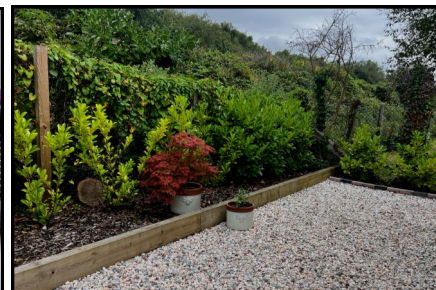
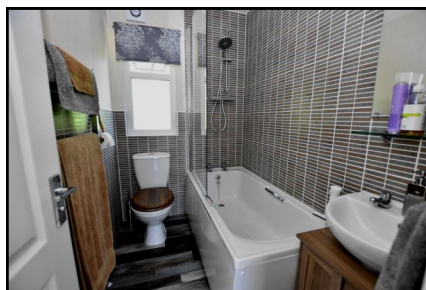
This drawing has been prepared for diagrammatic purpose only. Not to scale.

2-Bedroom Park Home - approx 36' x 12'

Accommodation & approximate room dimensions:

- Stately Albion Park Home 2014
- Hall: Cloaks cupboard
- Kitchen/Diner: approx 11'7" x 7'5". Fitted kitchen with range of floor and wall cupboards. Built-in oven, hob & cooker hood. Space and plumbing for washing machine & dishwasher or fridge. Free standing Larder Unit. Cupboard housing combination gas boiler (untested). Opening to:
- Lounge: approx 11'7" x 9'3". Feature fireplace. Door to garden. Bay window.
- Bedroom 1: approx 9'8" x 7'8" Plus built-in wardrobes.
- Bedroom 2: approx 7'9" x 4'5". Built-in wardrobe.
- Bathroom: Modern suite comprising bath with thermostatic shower over. Wash basin & WC.
- Gas Central Heating (system untested)
- PVCu Double-Glazing
- Delightful Landscaped Garden with Concrete Shed
- Parking for 1 Car
- Age Restriction 50+ No Pets Allowed
- Popular well maintained Residential Park near to shops & services.

Close to shops & services



Price: £129,950

Pitch Fee: approx £212 per month

Subject to Annual Review

Council Tax Band: 'A'

Tenure: 1983 Mobile Homes Act Agreement

VIEWING STRICTLY BY APPOINTMENT WITH THE VENDOR'S AGENT Dorset Park Homes 01202 877511

IMPORTANT NOTE: These particulars are believed to be correct but their accuracy is not guaranteed. They do not form part of any contract. Nothing in these particulars shall be deemed to be a statement that the property is in good structural condition or otherwise, nor that any of the services, appliances, equipment or facilities are in good working order or have been tested. Purchasers should satisfy themselves on such matters prior to purchase Ref.W04620

The recommended specialist in Park Home sales
Partner: Simon Dixon

