

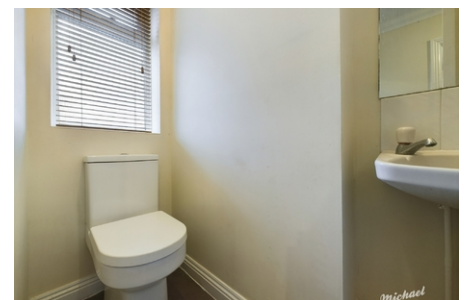
**66 Carnation Way,
Aylesbury, Buckinghamshire**

£1,500 PCM



Available with Zero Deposit Guarantee A beautiful three bedroom end of terrace house set within a cul-de-sac. The property boasts an entrance hall, kitchen, cloakroom, lounge/diner, three bedrooms, family bathroom with shower and a generous garden which will have a brand new storage shed.

Lavender Grange - Close to Stoke Mandeville Hospital the Lavender Grange development has local amenities within walking distance including convenience store and recommended local fish and chip shop. The A413 provides easy access to commute to High Wycombe. Aylesbury train station offers a direct line to



- *Available with Zero Deposit Guarantee*
- UNFURNISHED
- THREE BEDROOM
- PARKING SPACE
- DOWNSTAIRS CLOAKROOM
- CUL DE SAC POSITION