



## Property Features

---

- Four Bedroom Semi-Detached House
- Driveway Parking
- Two Reception Rooms
- Modern Bathroom and Downstairs WC
- Within Easy Access to High Wycombe Town Centre & Train Station
- Rear Garden with Decking Area
- Spacious and Versatile Living Accommodation
- Council Tax Band D
- Unfurnished
- Available From Mid-February 2024

## Full Description

---

A well presented and spacious three/four bedroom semi-detached family home, located on the west of High Wycombe which provides easy access to the town centre and local amenities. The property benefits from driveway parking for at least 2 cars and a rear garden which a decking area.

The accommodation comprises; entrance porch; downstairs WC; spacious living room; kitchen; separate dining room. The lower ground floor offers a large bedroom/additional reception room, which has it's own private entrance. The first floor offers a modern bathroom and three bedrooms.

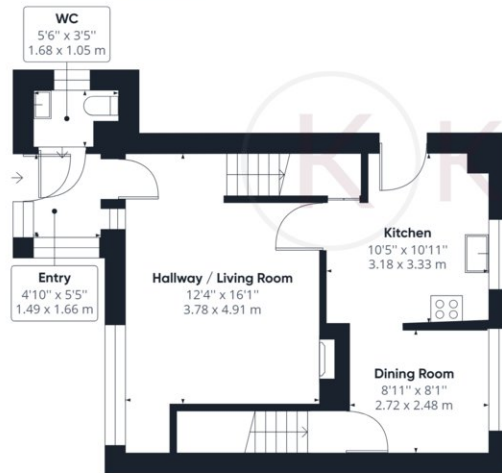
In contrast to all the tradition and tranquillity of the villages surrounding it, High Wycombe town centre has its eyes fixed firmly on the future. Currently in the midst of a massive updating project including expansion of the bustling Eden shopping centre, a brand new leisure centre along with a huge range of busy restaurants and bars, the town is fast becoming the place to live. Placed at Junction 4 of the M40 and having a train station in the centre offering a 24 minute commute to London Marylebone, High Wycombe is an ideal location to commute from. With a range of fantastic primary as well as renowned grammar and private schools, education is one of the main reasons people move to High Wycombe and stay there.



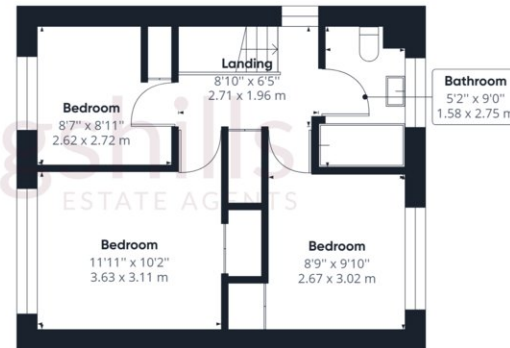




Ground Floor



Floor 1



Floor 2

Approximate total area<sup>(1)</sup>

1014.62 ft<sup>2</sup>  
94.26 m<sup>2</sup>

(1) Excluding balconies and terraces

While every attempt has been made to ensure accuracy, all measurements are approximate, not to scale. This floor plan is for illustrative purposes only.

GIRAFFE360