



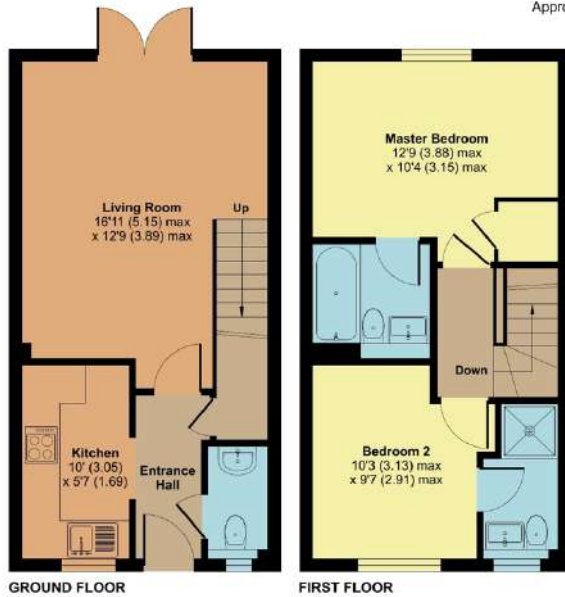
72 Thomas Fox Road Tonedale, Wellington TA21 0DF

£225,000

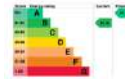


72 Thomas Fox Road, Tonedale, Wellington, TA21 0DF

Approximate Area = 652 sq ft / 60.6 sq m
For identification only - Not to scale



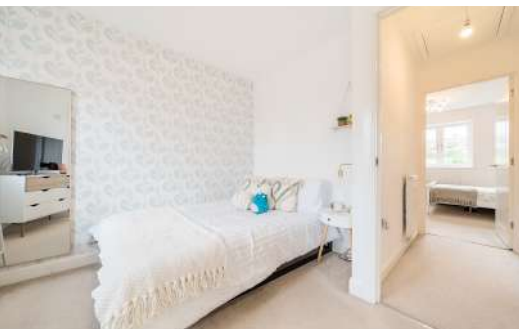
Floor plan produced in accordance with RICS Property Measurement Standards incorporating International Property Measurement Standards (IPMS2 Residential) © richardson 2024. Produced for Robert Cooney, NRP, 118/0812



Features

- Entrance Hall
- Living Room with French doors to garden
- Fitted Kitchen
- Cloakroom
- Master Bedroom with Ensuite Bathroom
- Further Double Bedroom with Ensuite Shower Room
- Enclosed South East facing low maintenance garden to rear
- Allocated parking
- Gas central heating
- Double glazing
- Council tax band B
- What3words: [///guideline.shadow.pans](https://www.what3words.com/#!/guideline.shadow.pans)

Situated within 1.5 miles of Wellington town centre is this well presented 2 double bedrooomed mid-terraced house with 2 ensuites, enclosed South East facing low maintenance garden to rear with allocated parking. No onward chain.



Viewing strictly through the selling agents:

Robert Cooney

Corporation Street, Taunton,
Somerset TA1 4AW

Telephone 01823 230 230

E-mail taunton@robertcooney.co.uk

Website: robertcooney.co.uk

**robert
cooney**