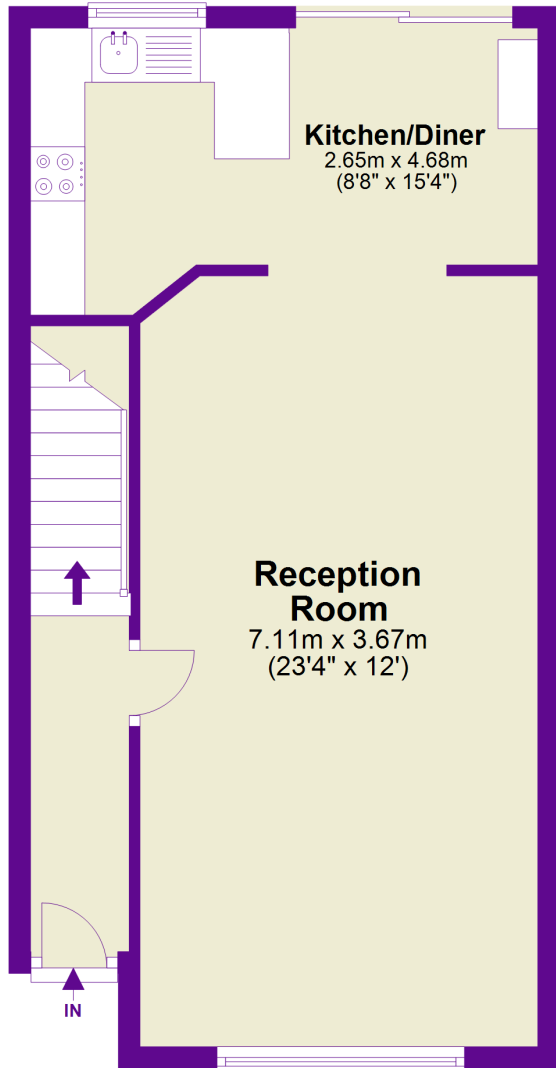


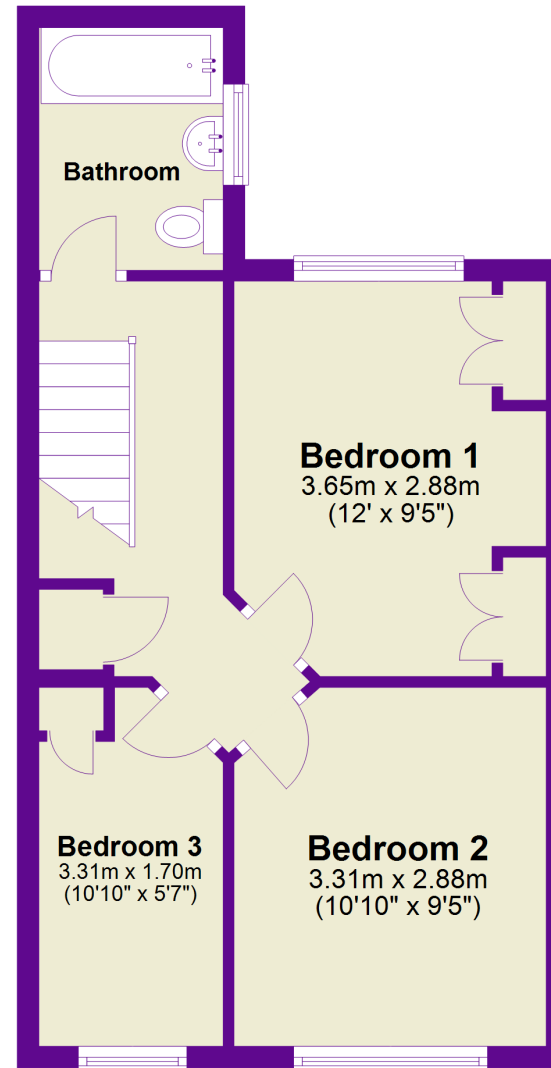
Ground Floor

Approx. 43.1 sq. metres (463.8 sq. feet)



First Floor

Approx. 37.0 sq. metres (398.3 sq. feet)



Total area: approx. 80.1 sq. metres (862.1 sq. feet)

This floor plan is for illustrative purposes only. Measurements, floor areas, openings (windows and doors), orientations and room titles are approximations. Measurements should not be relied upon for any installations, statement or contracts. No liability is taken for any error. All parties must rely on their own inspection.

Plan produced using PlanUp.