

Head Office:
Dixon Kelley Estate Agents
1 Penn Court
Station Road, West Moors
Dorset. BH22 0JJ

DORSET PARK HOMES

DRAFT

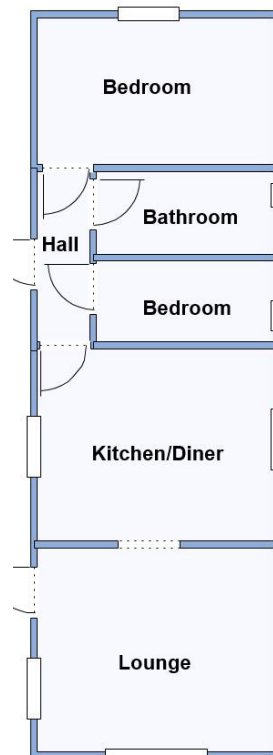
www.dorsetparkhomes.com

Telephone: 01202 877511

63 Doves Hill Park, Barnes Road, Bournemouth. BH10 5AJ



Well Presented Park Home on Popular Residential Park



This drawing has been prepared for diagrammatic purpose only. Not to scale.

2-Bedroom Park Home - approx 36' x 12'

Accommodation & approximate room dimensions:

- Omar Park Home circa 1994
- Entrance Hall: Laminate flooring.
- Kitchen/Diner: approx 11'8" x 9'5". Range of floor and wall cupboards. Space for cooker, space for tall fridge/freezer, washing machine & tumble dryer. Wall mounted combination gas boiler. Ample space for dining suite.
- Lounge: approx 11'8" x 10'1". Feature fireplace. Door to garden.
- Inner Hall: Cloaks cupboard
- Bedroom 1: approx 11'8" x 7'3". Fitted wardrobes.
- Bedroom 2: approx 8'9" x 4'.
- Bathroom: Panelled bath. Wash Basin and WC.
- Gas Central Heating (system untested)
- Small Garden laid to lawn. Metal Shed
- Parking for 1 car £15.17 per month
- Age Restriction 55+
- No Pets
- Well maintained Residential Park close to local amenities & Bournemouth Town Centre.

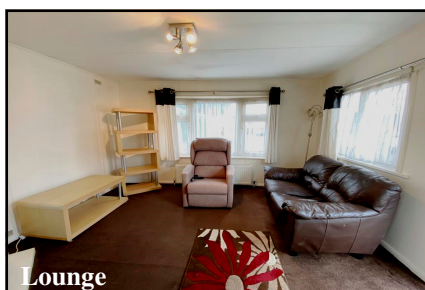
Close to Amenities



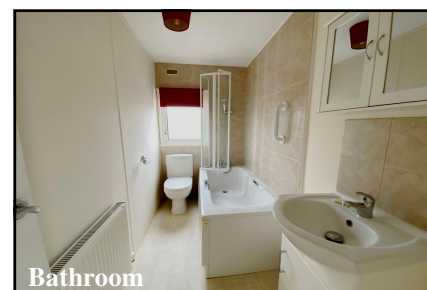
Kitchen/Diner



Dining Area



Lounge



Bathroom

Price: £75,000

Pitch Fee: approx £206.86 per month. Water & Sewerage £13.28
Subject to Annual Review
Council Tax Band: 'A' Tenure: 1983 Mobile Homes Act Agreement

VIEWING STRICTLY BY APPOINTMENT WITH THE VENDOR'S AGENT Dorset Park Homes 01202 877511

IMPORTANT NOTE: These particulars are believed to be correct but their accuracy is not guaranteed. They do not form part of any contract. Nothing in these particulars shall be deemed to be a statement that the property is in good structural condition or otherwise, nor that any of the services, appliances, equipment or facilities are in good working order or have been tested. Purchasers should satisfy themselves on such matters prior to purchase Ref.W04873

The recommended specialist in Park Home sales
Partner: Simon Dixon

