

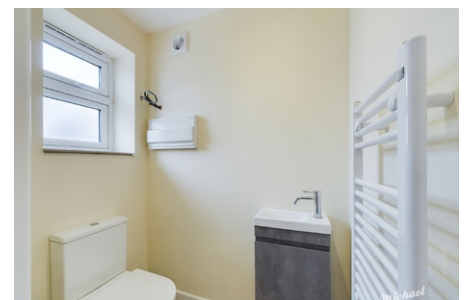
22 Newman Close,
Aylesbury, Buckinghamshire

£1,400 PCM



Available with a Zero Deposit Guarantee

Michael Anthony Aylesbury Lettings are pleased to present to the market this brand new two bedroom semi-detached home. The property is situated in an exclusive cul-de-sac location comprising, entrance hallway, cloakroom WC, kitchen/diner with fitted appliances, a lounge, two bedrooms and a family bathroom. The property also benefits from double glazing, solar panels, heat source pump heating, EV car charging point, block paved driveway parking for 2-3 vehicles and an enclosed turfed rear garden with a patio.



- **Available Zero Deposit Guarantee**
- UNFURNISHED
- NEW BUILD
- 2 BED SEMI-DETACHED
- KITCHEN WITH APPLIANCES
- LIVING ROOM