





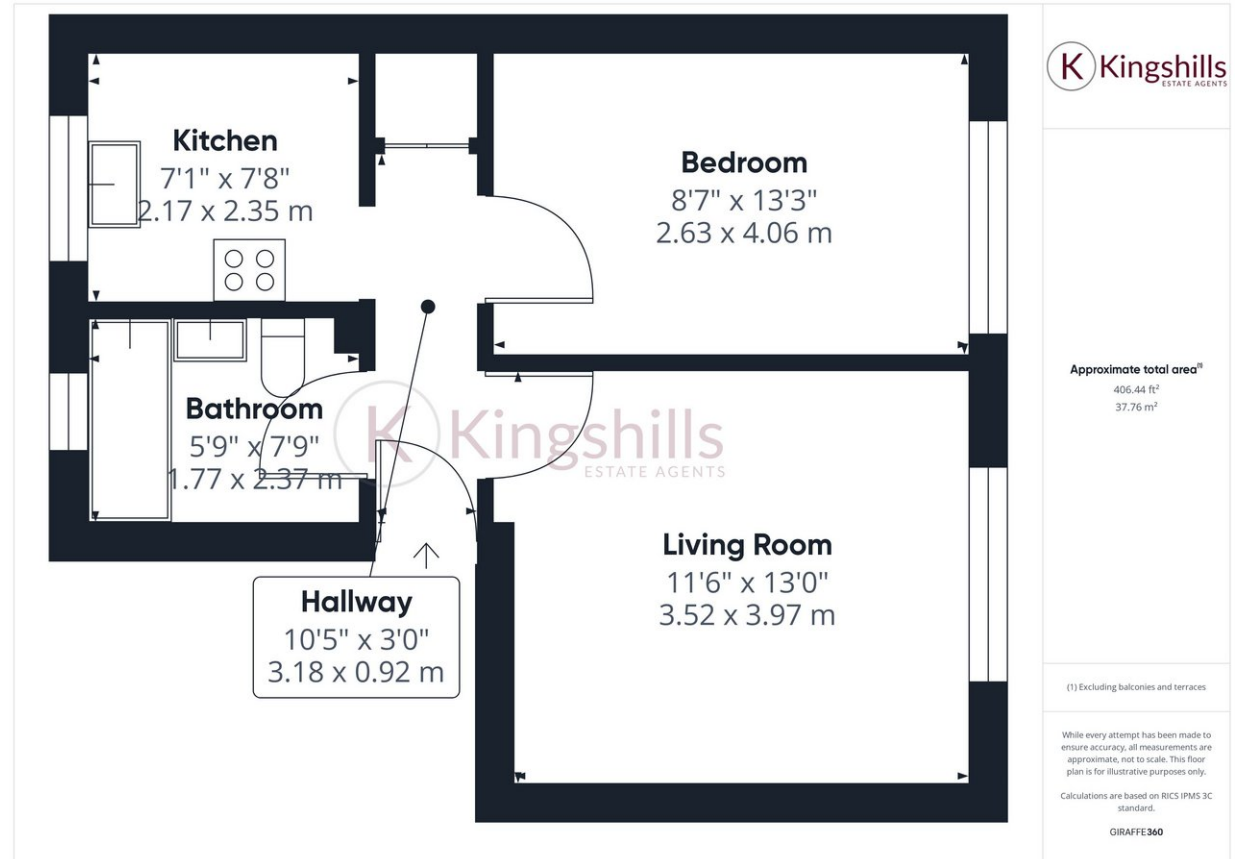
## Property Description

A second floor one bedroom apartment that is available for occupation from mid January on a flexible furnishings basis. The property is located on the east side of High Wycombe in Loudwater and has excellent commuter links to the M40 and access to local amenities. The accommodation comprises; entrance hall; living room; fitted kitchen, 1 bedroom and bathroom. The property also has the benefits from allocated parking and additional visitor parking.

TENURE

COUNCIL TAX B

EPC RATING C



Kingshills Estate Agents  
Comet Studios  
Amersham  
Buckinghamshire  
HP7 0PX

01494 939868  
hello@kingshills.co.uk  
kingshills.co.uk

Agents Note: Whilst every care has been taken to prepare these particulars, they are for guidance purposes only. All measurements are for general guidance purposes only and whilst every care has been taken to ensure accuracy, they should not be relied upon and potential buyers/tenants are advised to recheck the measurements