

Head Office:
Dixon Kelley Estate Agents
1 Penn Court
Station Road, West Moors
Dorset. BH22 0JJ

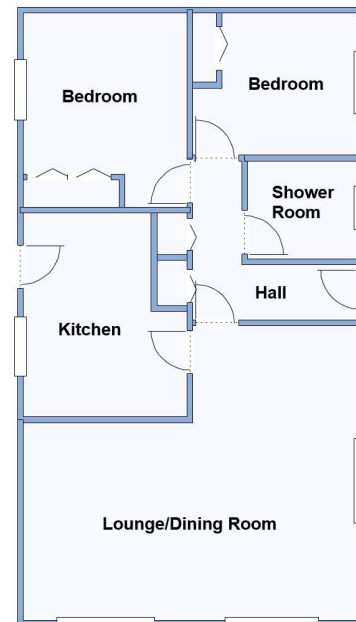
DORSET PARK HOMES

DRAFT

www.dorsetparkhomes.com

Telephone: 01202 877511

6 Tulip Court, Organford Manor Country Park, Organford, Poole. BH16 6ES



This drawing has been prepared for diagrammatic purpose only.
Not to scale.

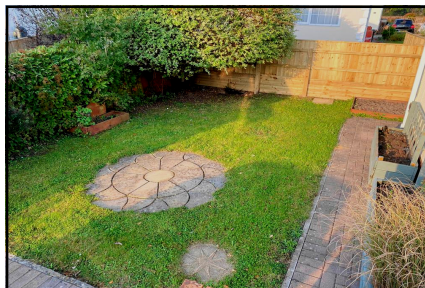
Modern Park Home on Wonderful 'Pet Friendly' Park

2-Bedroom Park Home - approx 36' x 20'

Accommodation & approximate room dimensions:

- Prestige 'Sonata' Park Home circa 2012
- Entrance Hall: Cloaks cupboard. Airing cupboard. Hatch to roof space.
- Kitchen: approx 11'10" x 9'7". Excellent range of floor and wall cupboards. Built-in oven, hob & cooker hood. Integrated fridge/freezer and washing machine. Cupboard housing combination boiler.
- Lounge/Dining Room: approx 19'5" x 17'3" overall max. Feature fireplace. 2 Bay windows.
- Bedroom 1: approx 11'3" x 9'6". Fitted wardrobes.
- Bedroom 2: approx 9'6" x 8'3". Fitted wardrobes.
- Shower Room: Shower cubicle. Wash basin & WC.
- Gas Central Heating (system untested)
- PVCu Double-Glazing
- 'On Plot' Parking
- Garden laid to lawn with circular patio area and enjoying a sunny aspect. Metal Shed
- Age Restriction 45+ Pets Considered
- Beautifully maintained 'gated' Residential Park with large dog walking area.
- Within easy reach of Wareham & Poole.
- No Chain!

Sunny Garden & Parking on Plot



Pitch Fee: approx £65.68 per week including Water & Sewerage
Subject to Annual Review
Council Tax Band: 'A' **Tenure: 1983 Mobile Homes Act Agreement**

Price: £179,950

VIEWING STRICTLY BY APPOINTMENT WITH THE VENDOR'S AGENT Dorset Park Homes 01202 877511

IMPORTANT NOTE: These particulars are believed to be correct but their accuracy is not guaranteed. They do not form part of any contract. Nothing in these particulars shall be deemed to be a statement that the property is in good structural condition or otherwise, nor that any of the services, appliances, equipment or facilities are in good working order or have been tested. Purchasers should satisfy themselves on such matters prior to purchase Ref.W04885

The recommended specialist in Park Home sales
Partner: Simon Dixon

