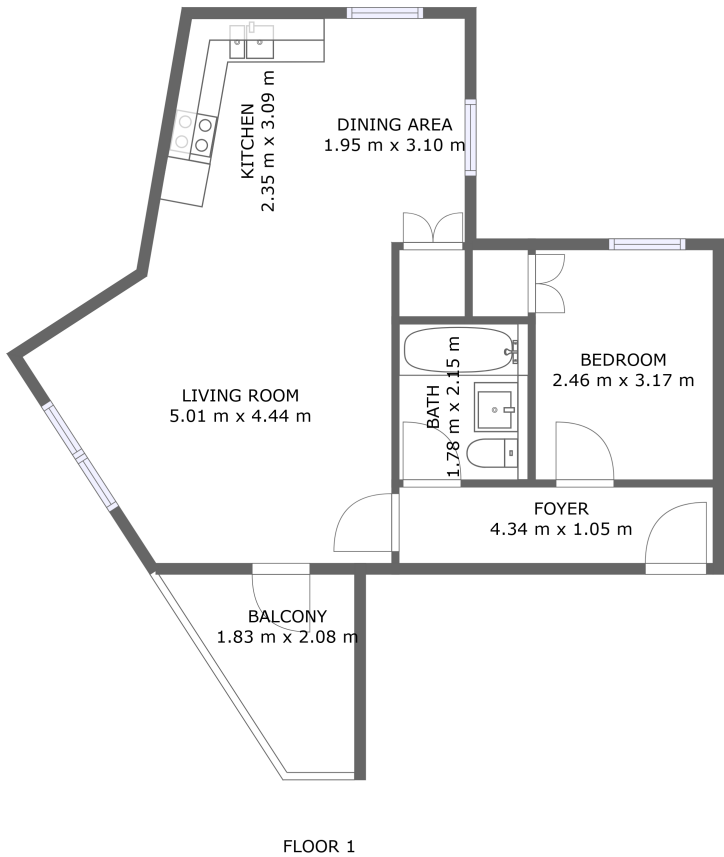
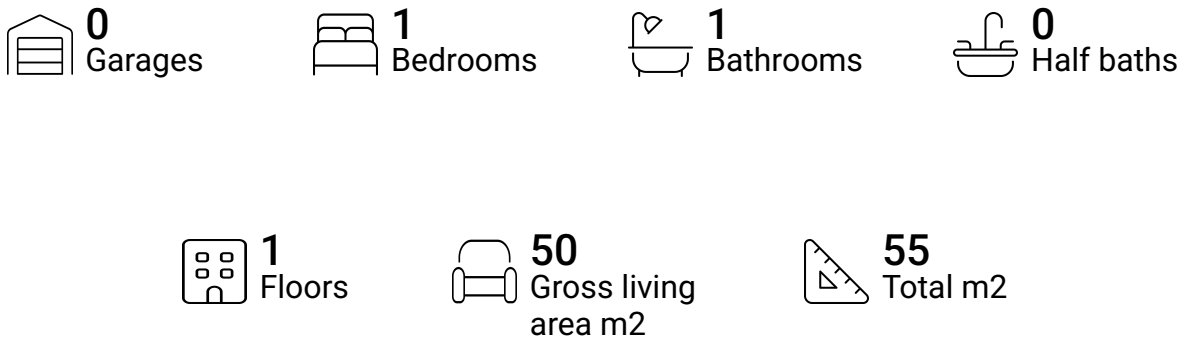


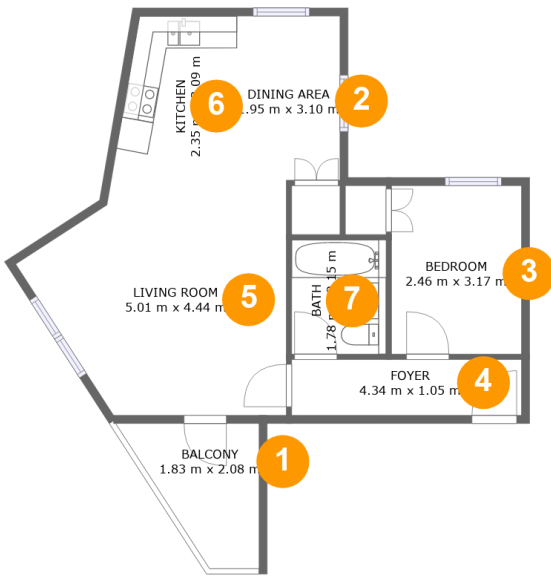
Flat 2, Appleby Mews,,London,United kingdom



Property summary



Flat 2, Appleby Mews,,London,United kingdom



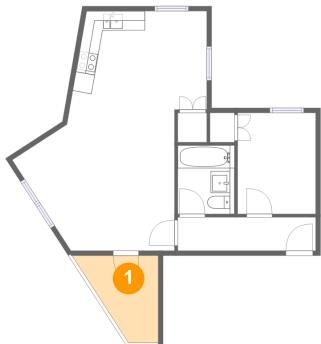
Room dimensions

Floor 1 Total m2: 55 Living area: 50

#		Dimensions	m2	Counted as living area
1	Balcony	1.83 m x 2.08 m	5 m2	No
2	Dining Area	1.95 m x 3.10 m	6 m2	Yes
3	Bedroom	2.46 m x 3.17 m	8 m2	Yes
4	Foyer	4.34 m x 1.05 m	5 m2	Yes
5	Living Room	5.01 m x 4.44 m	18 m2	Yes
6	Kitchen	2.35 m x 3.09 m	7 m2	Yes
7	Bath	1.78 m x 2.15 m	4 m2	Yes

Flat 2, Appleby Mews,,London,United kingdom

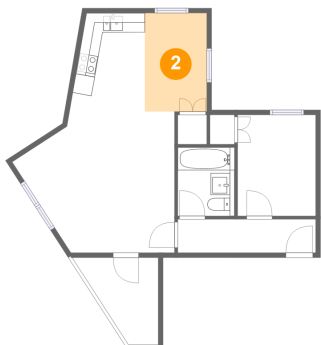
1 Floor 1 - Balcony



Dimensions: 1.83 m x 2.08 m
Area: 5 m2
Counted as living area: No

Heated: No
Finished: Yes
Enclosed: No
Contiguous: Yes
Permitted: Yes
Wet space: No
Addition: No
Conversion: No

2 Floor 1 - Dining Area

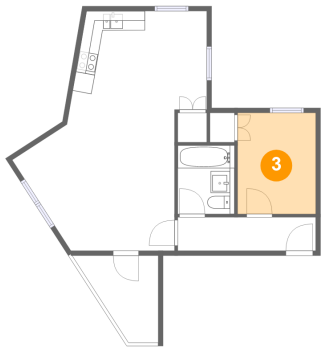


Dimensions: 1.95 m x 3.10 m
Area: 6 m2
Counted as living area: Yes

Heated: Yes
Finished: Yes
Enclosed: Yes
Contiguous: Yes
Permitted: Yes
Wet space: No
Addition: No
Conversion: No

Flat 2, Appleby Mews,,London,United kingdom

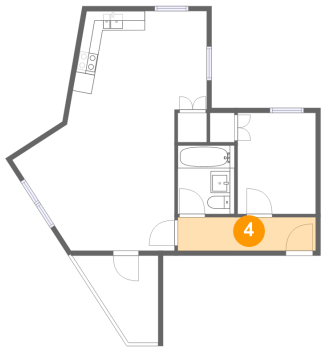
3 Floor 1 - Bedroom



Dimensions: 2.46 m x 3.17 m
Area: 8 m2
Counted as living area: Yes

Heated: Yes
Finished: Yes
Enclosed: Yes
Contiguous: Yes
Permitted: Yes
Wet space: No
Addition: No
Conversion: No

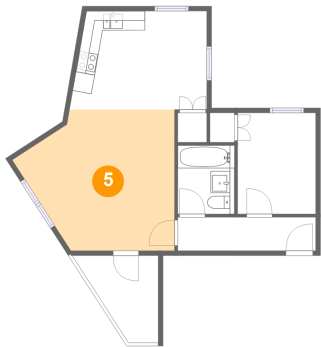
4 Floor 1 - Foyer



Dimensions: 4.34 m x 1.05 m
Area: 5 m2
Counted as living area: Yes

Heated: Yes
Finished: Yes
Enclosed: Yes
Contiguous: Yes
Permitted: Yes
Wet space: No
Addition: No
Conversion: No

5 Floor 1 - Living Room

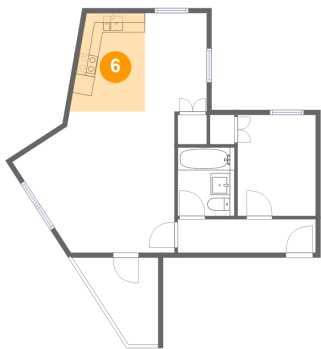


Dimensions: 5.01 m x 4.44 m
Area: 18 m2
Counted as living area: Yes

Heated: Yes
Finished: Yes
Enclosed: Yes
Contiguous: Yes
Permitted: Yes
Wet space: No
Addition: No
Conversion: No

Flat 2, Appleby Mews,,London,United kingdom

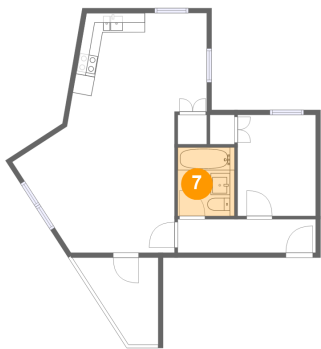
6 Floor 1 - Kitchen



Dimensions: 2.35 m x 3.09 m
Area: 7 m2
Counted as living area: Yes

Heated: Yes
Finished: Yes
Enclosed: Yes
Contiguous: Yes
Permitted: Yes
Wet space: No
Addition: No
Conversion: No

7 Floor 1 - Bath



Dimensions: 1.78 m x 2.15 m
Area: 4 m2
Counted as living area: Yes

Heated: Yes
Finished: Yes
Enclosed: Yes
Contiguous: Yes
Permitted: Yes
Wet space: Yes
Addition: No
Conversion: No