



3 Cheddon Close Cheddon Fitzpaine TA2 8GE

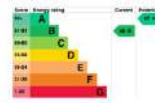
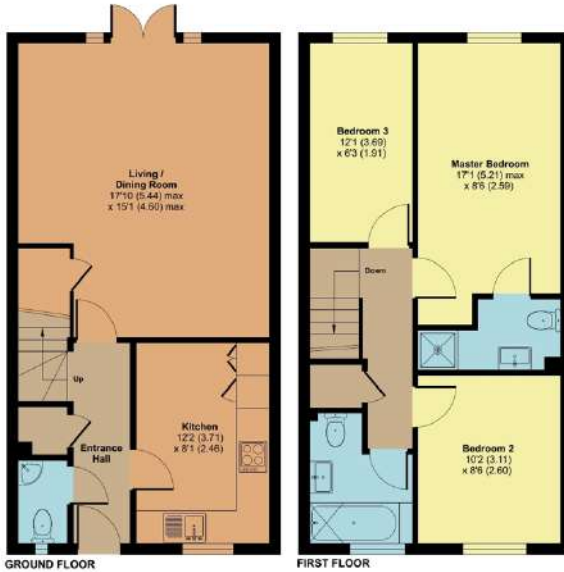
£285,000





### 3 Cheddon Close, Cheddon Fitzpaine, Taunton, TA2 8GE

Approximate Area = 924 sq ft / 85.8 sq m  
For identification only - Not to scale



Floor plan produced in accordance with RICS Property Measurement Standards incorporating International Property Measurement Standards (IPMS) (Residential). © rick.co.uk 2024. Produced for Robert Cooney REF: 1181975

#### Features

- Entrance Hall
- Living / Dining Room with French doors to garden
- Fitted Kitchen
- Cloakroom
- Master Bedroom with Ensuite Shower Room
- 2 further Bedrooms
- Family Bathroom
- Enclosed South facing garden to rear
- Garage with rear access and driveway parking
- Gas central heating
- Double glazing
- Remaining NHBC Warranty
- Council tax band C
- What3words: [///napped.acting.scavenger](https://www.what3words.com////napped.acting.scavenger)

Within this convenient location just 2 miles from the centre of town is this immaculately presented 3 bedroomed mid-terraced house with enclosed South facing garden to rear, garage and driveway parking. No onward chain.



Viewing strictly through the selling agents:

**Robert Cooney**

Corporation Street, Taunton,  
Somerset TA1 4AW

Telephone 01823 230 230

E-mail [taunton@robertcooney.co.uk](mailto:taunton@robertcooney.co.uk)

Website: [robertcooney.co.uk](http://robertcooney.co.uk)

**robert  
cooney**