



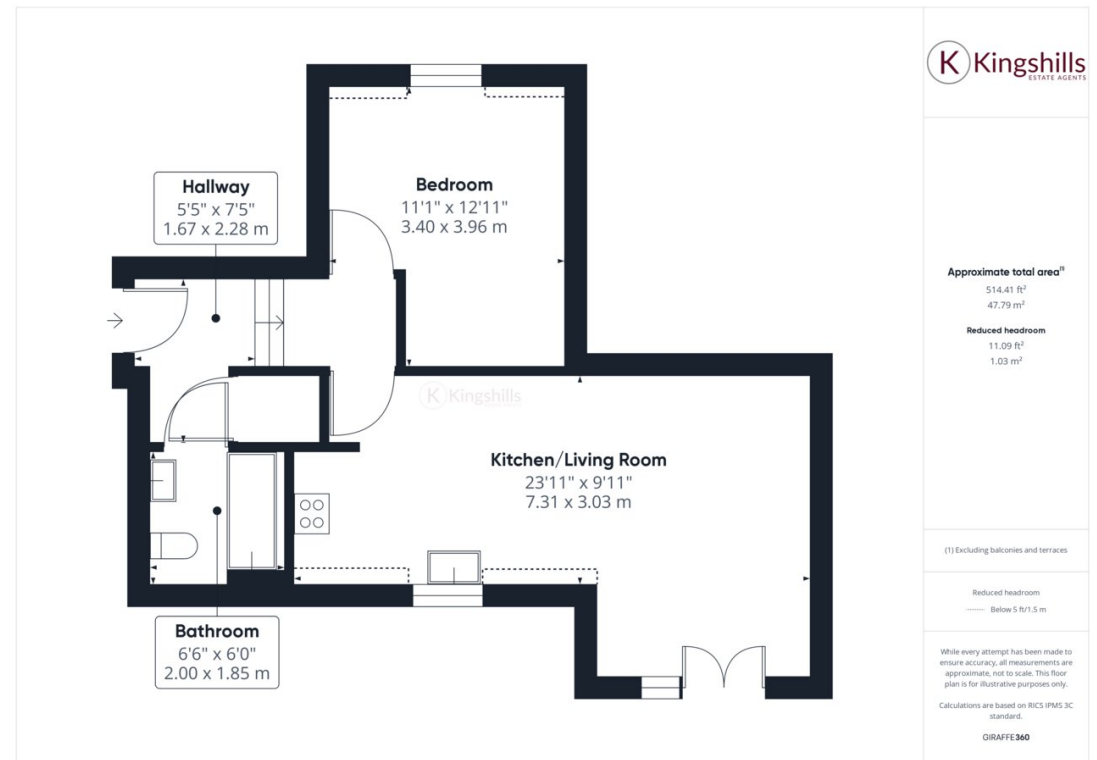
Property Description

Situated just a short walk from the vibrant heart of High Wycombe town centre, this delightful second-floor flat offers modern living in an incredibly convenient location. Perfect for first-time buyers, professionals, or investors, this property combines comfort with easy access to local amenities and transport links.

The open plan bright and airy living space is the heart of the home, featuring a well-appointed kitchen that seamlessly integrates with the lounge. This versatile space allows for both relaxation and dining, enhanced by the natural light that pours in through the Juliette balcony. The kitchen is modern and stylish, equipped with ample cabinetry, quality appliances, and plenty of counter space, making it perfect for both everyday cooking and entertaining guests.

The property includes a spacious double bedroom, designed with comfort in mind. The neutral decor provides a blank canvas, ready to be personalized to suit your style.

Completing the flat is a modern family bathroom, featuring contemporary fittings and a clean, sleek design. This flat also benefits from one allocated parking space, a valuable addition in such a central location, providing convenience and peace of mind. With its ideal location and modern interiors this property is a fantastic opportunity to enjoy urban living in High Wycombe while being close to all the amenities this bustling town has to offer.



Kingshills Estate Agents
Comet Studios
Amersham
Buckinghamshire
HP7 0PX

01494 939868
hello@kingshills.co.uk
kingshills.co.uk

Agents Note: Whilst every care has been taken to prepare these particulars, they are for guidance purposes only. All measurements are for general guidance purposes only and whilst every care has been taken to ensure accuracy, they should not be relied upon and potential buyers/tenants are advised to recheck the measurements