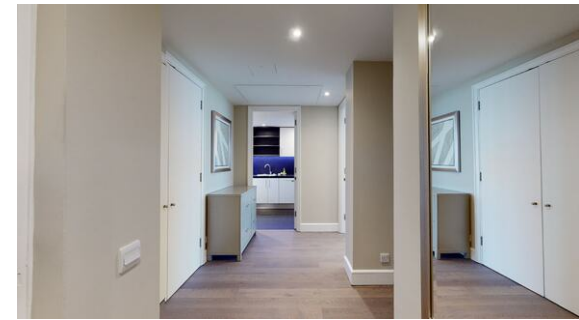




2 Bedroom 2 bath Flat,
Canary Wharf, London E14

<https://qinvestments.london>



2 Bedroom Apartment to Rent in Canary Wharf, London E14.

- **Virtual Walk Through available**
- **Air conditioning in reception and bedrooms**
- **On-site receptionist, caretaker and 24hr monitored security**
- **24/7 emergency maintenance service**

Canary Wharf, London E14

Modern 2 Bedroom Apartment to Rent in Canary Wharf, London E14.

Newly refurbished 2 bedrooms and 2 bathrooms covering 952 sq. ft in living space and situated on the 7th floor, with new furniture interior designed waterside apartment in Canary Wharf. Residents further benefit from porter facilities, 24hr security, TV Room and private gated gardens.

The space boasts floor to ceiling windows that allow in an abundance of natural light, while a private balcony with dramatic views of the impressive Canary Wharf skyline provides a relaxing setting.

A separate fully equipped kitchen with stylish LED under cabinet mood lighting, full-sized fridge/freezers, electric ovens with gas hobs, microwave ovens, external extractors, 1.5 sinks with food waste disposal, dishwashers, and washer dryers, so that you have everything you need from the day you move in.

The flat is student friendly and has a current EPC rating of C. Located on a quiet street, the property is located only moments away from Canary Wharf station, the docklands and many restaurants and amenities.

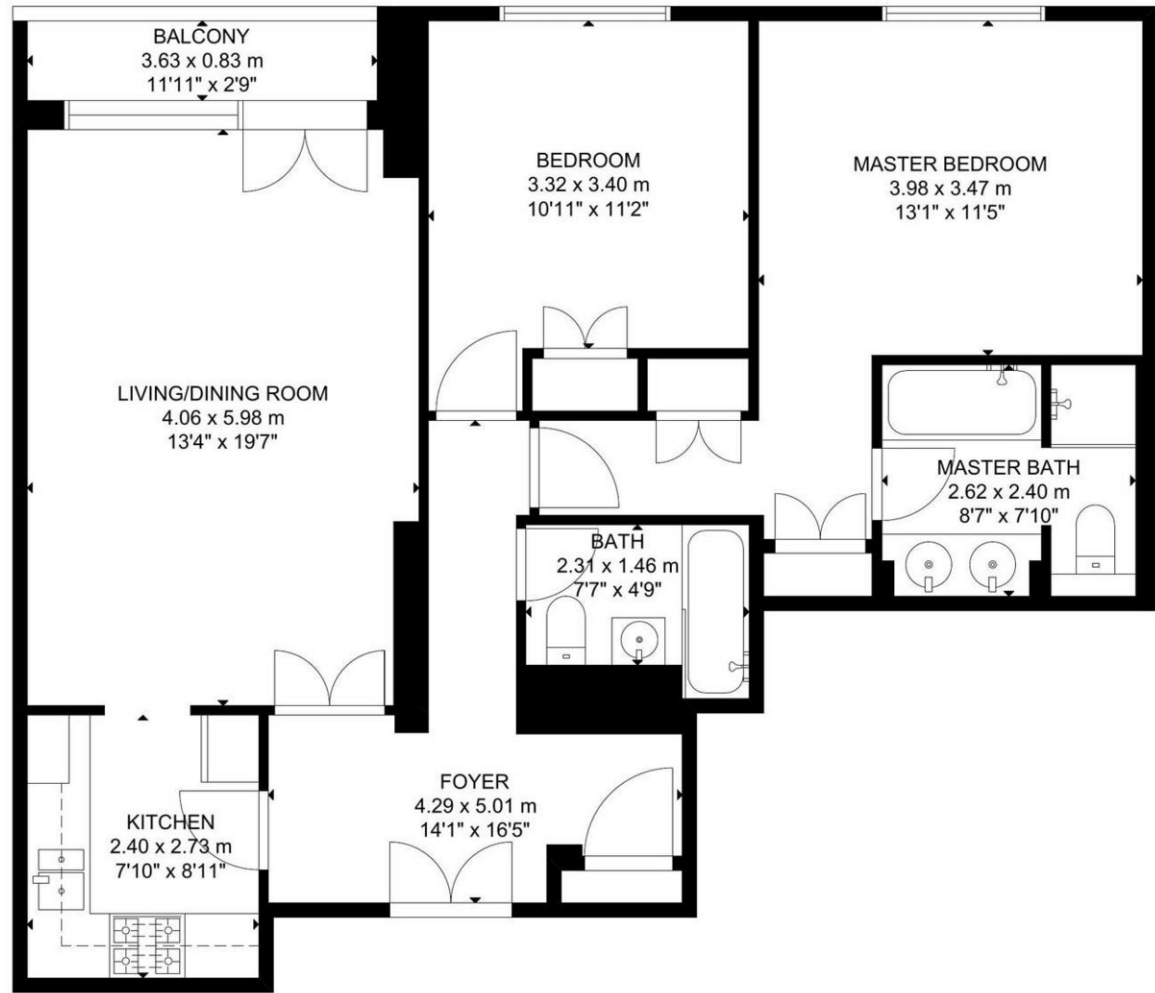
The apartment is ideally positioned within easy access of Zone 2 stations of Westferry (DLR), Canary Wharf (Jubilee) and Crossrail (Elizabeth line), adding to the extensive transport links including tree lined riverside footpaths, Thames Clipper river service, and local buses.

The monthly rate above is subject to a tenancy of 6 months.

Ask us for:

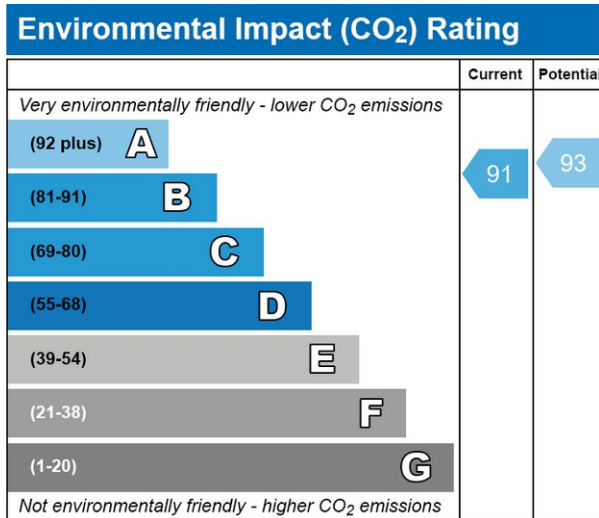
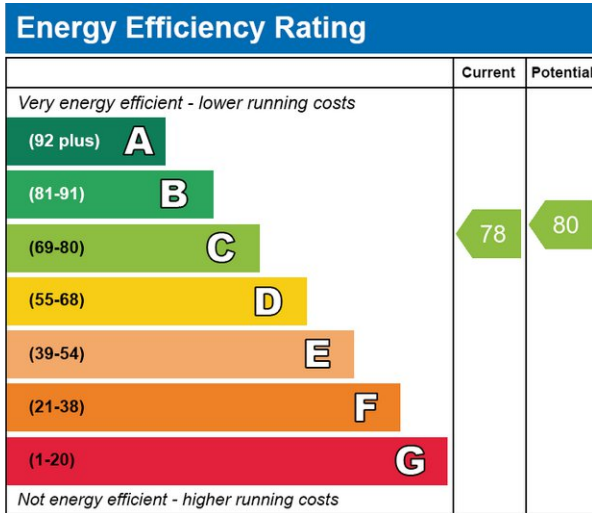
- Video walk through property
- 3D Tour

The property is available to rent furnished or unfurnished.



SEVENTH FLOOR

GROSS INTERNAL AREA
 TOTAL: 88 m²/952 sq ft
 SEVENTH FLOOR: 88 m²/952 sq ft
 EXCLUDED AREA: BALCONY: 3 m²/32 sq ft
 SIZE AND DIMENSIONS ARE APPROXIMATE, ACTUAL MAY VARY.



CONTACT US

Have a question for us? Please get in touch.

Q INVESTMENTS INTERNATIONAL LTD

T: +44 (0) 7985 487333

E: office@qinvestments.london

INVESTMENTS, REAL ESTATE & LIFESTYLE

Stay connected

Please visit our social media pages.

You can now find us on [Facebook](#), [Twitter](#), [Linkedin](#) and [Instagram](#) and many more!