



ELMSEIGH HOUSE

HIGH STREET, ROTHBURY

AYRE
PROPERTY
SERVICES

01669 621312
ayrepropertyservices.co.uk

£210,000

GUIDE
PRICE

Elmsleigh House is situated towards the western end of Rothbury's High Street, the property is of historical interest. The residential accommodation is accessed via a (shared) pedestrian passageway to the side of Elmsleigh House. Two self-contained units are within which have been upgraded and modernised to a particularly high standard. The accommodation comprises; Entrance Hall. Door to Ground Floor apartment with Sitting Room/Kitchen and en-suite Bedroom. First Floor; Sitting Room, Kitchen, Two Bedrooms, and Bathroom. Access to Loft space which could be easily converted into additional accommodation, subject to necessary consent.

Rothbury

Known as the 'Capital of Coquetdale' Rothbury is a small Northumbrian market town equidistant from the larger settlements of Alnwick and Morpeth. It still shows signs of prosperity as a late Victorian resort, brought about by the arrival of the railway, (now gone), and the influence of Lord Armstrong and Cragside. Facilities include First and Middle Schools, a library, art centre, a number of public houses/restaurants, bank, golf club, professional and medical services and a full range of local shops.

Services

Mains electricity, gas, drainage and water.

Fully double-glazed.

First floor benefits from Gas Central Heating.

Postcode

NE65 7TH

Local Authority

Northumberland County Council

Tel: 01670 627 000

Council Tax

Ground Floor: N/A

First and Second Floor: Band A: £1,510.28 - 2023/24

Tenure

Leasehold

EPC Rating

Current Rating - E

Full report available upon request.

Viewing

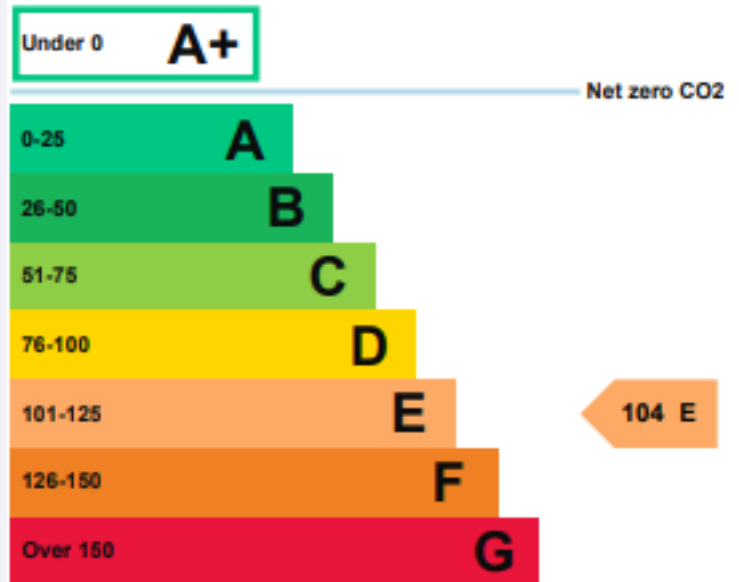
Strictly by appointment with the selling agents.

Location

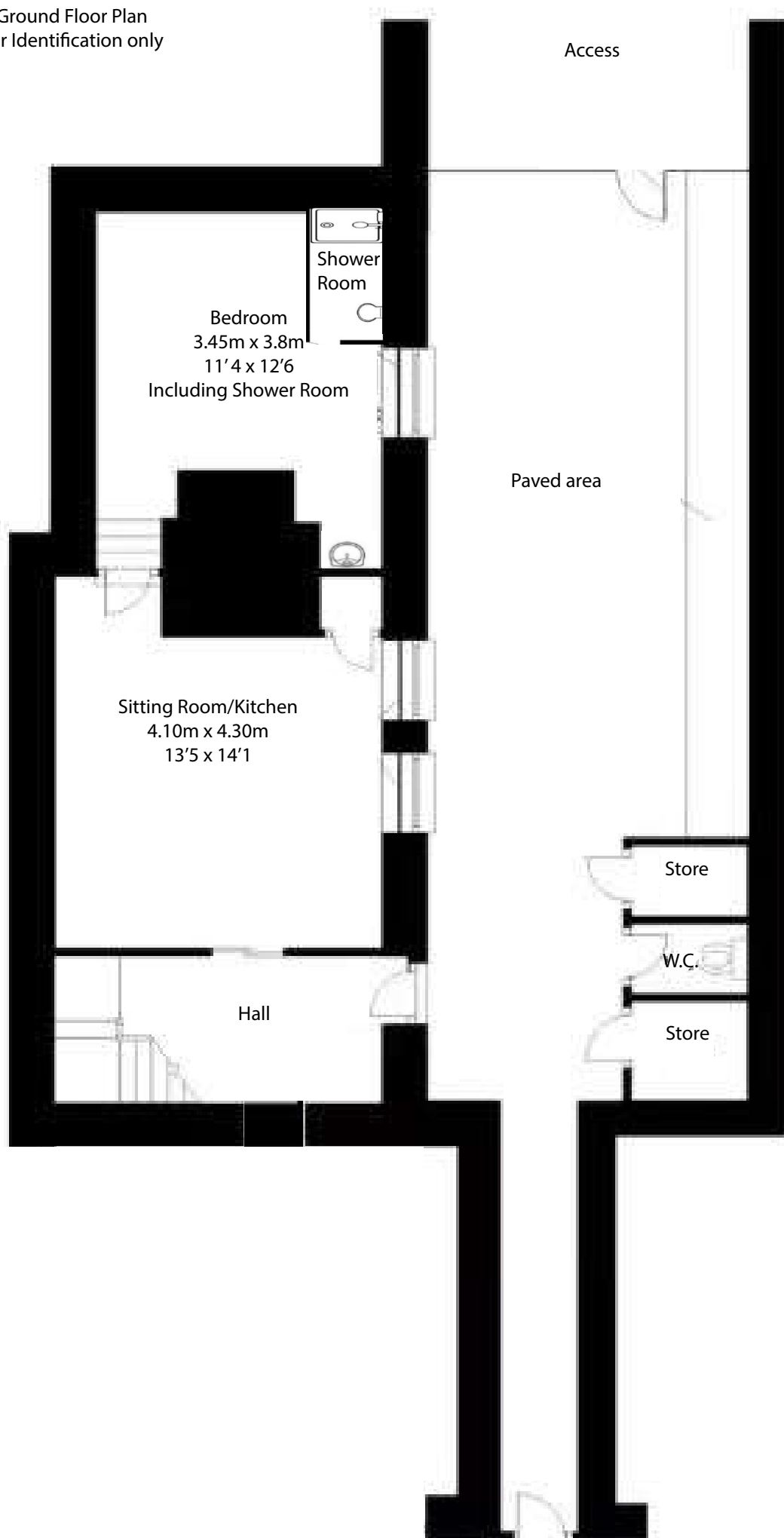
For detailed directions please contact the selling agents.

Details Prepared July 2023

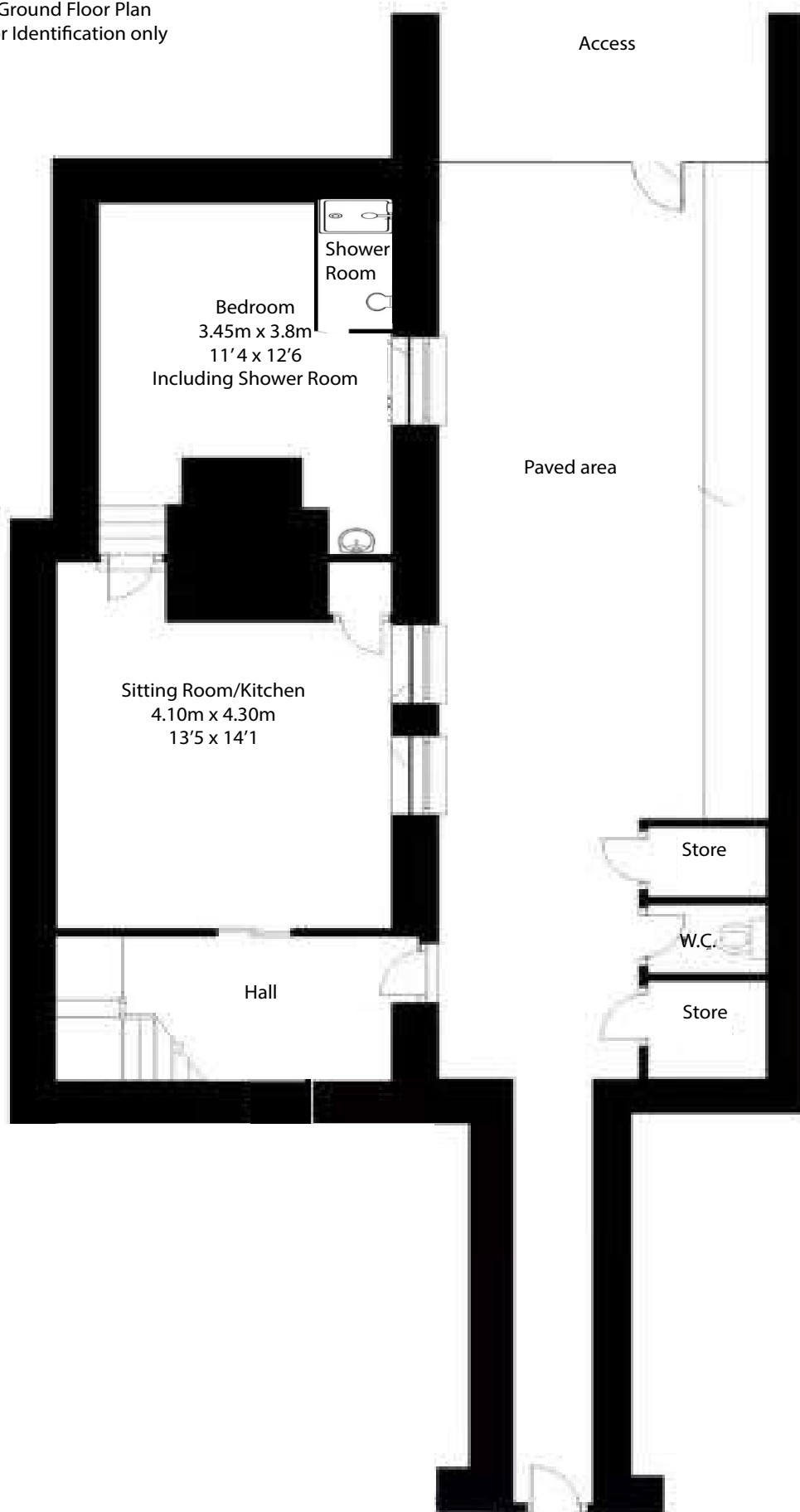
Property Reference 87374684



Ground Floor Plan
For Identification only



Ground Floor Plan
For Identification only









AYRE
PROPERTY SERVICES

Townfoot, Rothbury, Morpeth, NE65 7SP | info@ayrepropertyservices.co.uk | www.ayrepropertyservices.co.uk | 01669 621312

Promap

These particulars are intended only as a guide for prospective purchasers and do not constitute part of an offer or contract. All descriptions, dimensions and other details are given in good faith and are believed to be correct but prospective purchasers should not rely on them as statements or representations of fact, but must satisfy themselves by inspection or otherwise as to their correctness. No responsibility can be accepted for expenses incurred by prospective purchasers in inspecting a property that has been sold or withdrawn from the market.