



255 West Wycombe Road, High Wycombe, Buckinghamshire, HP12 3AS

Asking Price | £2,250

Property Features

- Detached House
- Three Double Bedrooms In Main House
- One Bedroom Self-Contained Flat/Annex
- Decking Area off Living Area
- Two Large Reception Rooms
- Large Rear Garden
- Parking to Rear
- Close to High Wycombe Town Centre
- Gas Heating
- Available from Mid-January

Full Description

A unique and versatile three-bedroom detached house on the west-side of High Wycombe town centre which offers a separate one-bedroom annex/flat on the lower ground floor. This property offers spacious accommodation throughout and is perfect for a growing family.

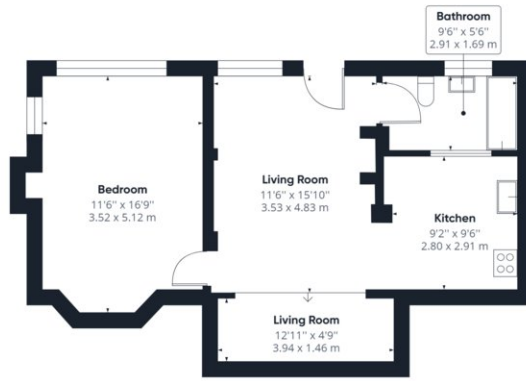
The property internally comprises; entrance hallway; living area with sliding doors which leads to the decking area overlooking the gardens; separate dining area/home office; modern kitchen with a range of appliances and WC. The first floor offers three good size double bedrooms and family bathroom.

To the lower ground floor, you will find a completely separate one-bedroom annex/flat which consists of a double bedroom, living area, dining area and kitchen. To the rear you will find parking for several cars and large gardens.

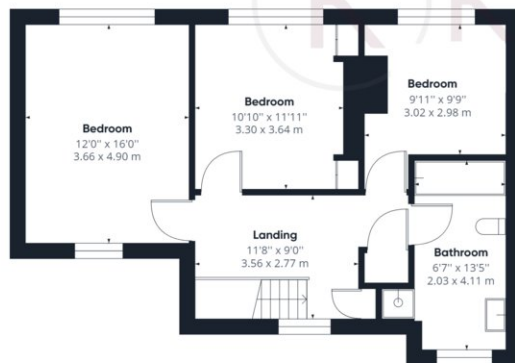
Available to rent from mid-January.



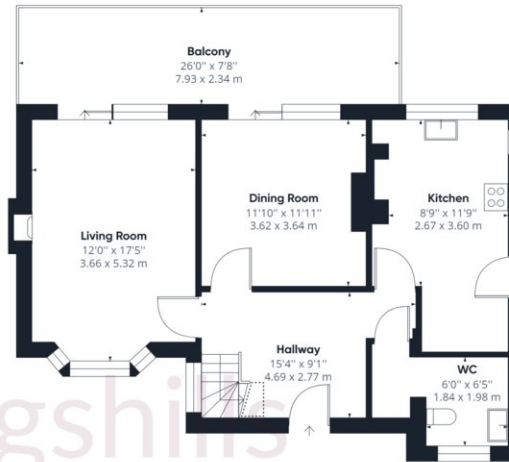




Ground Floor Building 1



Floor 2 Building 1



Floor 1 Building 1

Balcony
26'0" x 7'8"
7.93 x 2.34 m

Approximate total area⁽¹⁾

1944.68 ft²

180.67 m²

Reduced headroom

5.13 ft²

0.48 m²

(1) Excluding balconies and terraces

 Reduced headroom
(below 1.5m/4.92ft)

While every attempt has been made to ensure accuracy, all measurements are approximate, not to scale. This floor plan is for illustrative purposes only.

GIRAFFE360