



Property Features

- Four Bedrooms
- First Floor Apartment
- Open Plan Lounge/Dining/Kitchen Area
- Well Presented
- Private Entrance
- Parking For 2 Cars
- Garden
- Unfurnished
- Available Now

Full Description

A well presented first floor apartment with four bedrooms.

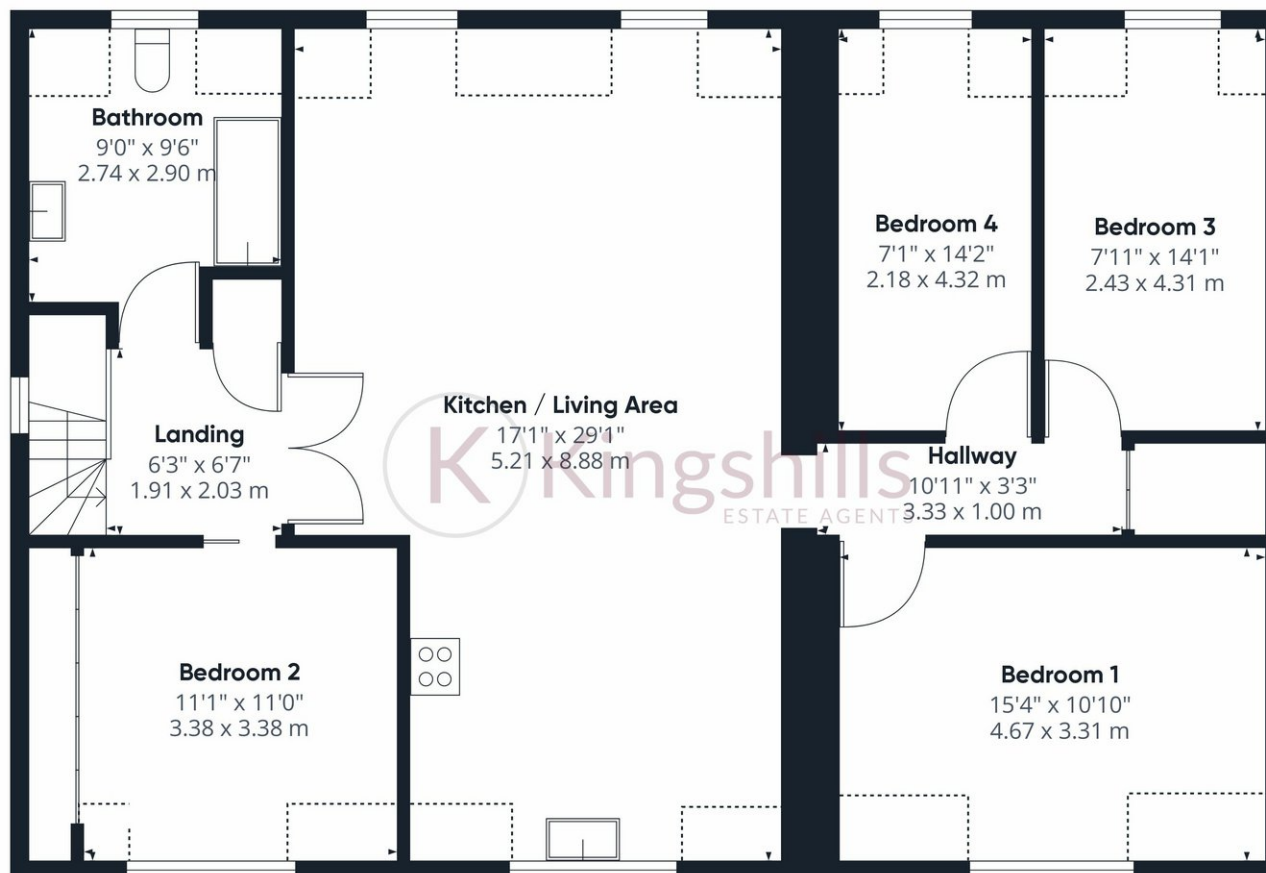
This spacious apartment benefits from an open plan lounge/dining and kitchen area with fitted appliances, four bedrooms (2 double and 2 singles) all with fitted storage and bathroom including a bath with overhead shower. The property offers 2 allocated parking spaces and a good size rear garden.

The local area provides a plethora of beautiful countryside with Hughenden Valley in easy reach as are local primary and secondary schools. High Wycombe Train Station with its excellent links to London Marylebone Station is less than 10 minutes drive away and the M40 at Handy Cross ensures that road networks both North and South are readily accessible.

Available now on an unfurnished basis.







Approximate total area⁽¹⁾

1159.6 ft²

107.73 m²

Reduced headroom

106.24 ft²

9.87 m²

(1) Excluding balconies and terraces

Reduced headroom

..... Below 5 ft/1.5 m

While every attempt has been made to ensure accuracy, all measurements are approximate, not to scale. This floor plan is for illustrative purposes only.

Calculations are based on RICS IPMS 3C standard.

GIRAFFE360