



Huntley Close, Cambridge, CB5 8QX

£1,570 pcm

Unfurnished

3 Bedrooms

Available from 20/04/2024

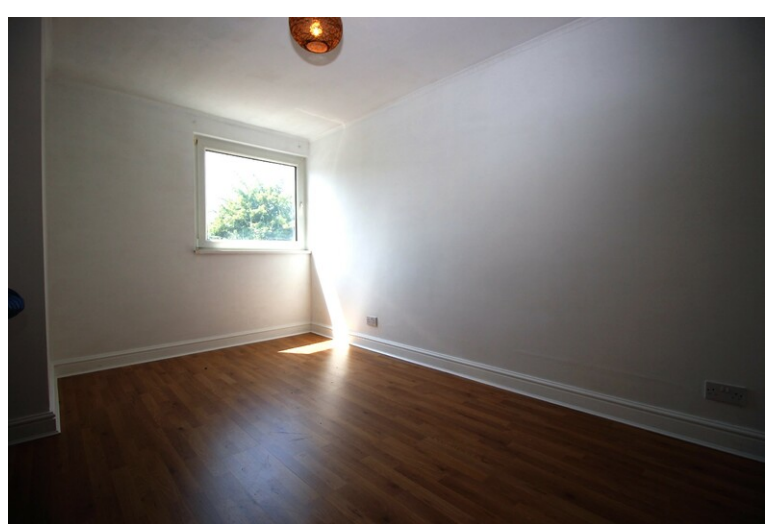
EPC rating: C

2 Dukes Court, 54-62 Newmarket Road, Cambridge, CB5 8DZ

TEL: 01223 322552

E-MAIL: cambridgelettings@pocock.co.uk

WEB: www.pocock.co.uk



Huntley Close, Cambridge CB5 8QX

Three bedroom family home located on the east side of Cambridge with views overlooking open fields. Ample storage in the kitchen (white goods not included). Large living room and two of the bedrooms are double. Off street parking and garden with large shed.

- Three bedroom family home
- Off street parking
- Garden with large shed
- Views over fields at the front
- Gas central heating
- Deposit: £1811.00
- EPC Rating: C

Rent: £1,570 pcm

Viewing by appointment

Located on the east of the city close to Fen Ditton with views of fields at the front. This three bedroom family home offers spacious living accommodation, off street parking, low maintenance secure garden with a large shed/ work room.

KITCHEN

13'1" x 8'6" (4.00 m x 2.60 m)

Ample built in storage, hob and oven with space and plumbing for a washing machine and room for fridge freezer.

LIVING ROOM

19'0" x 14'9" (5.80 m x 4.50 m)

Measurements are approximate and at the rooms widest points.

Large room with plenty of light with both patio and French doors offering access to the garden.

SHOWER ROOM

Ground floor shower room with basin and WC.

BEDROOM 1

14'5" x 9'2" (4.40 m x 2.80 m)

Double room overlooking the rear of the house.

BEDROOM 2

11'2" x 9'2" (3.40 m x 2.80 m)

Double room.

BEDROOM 3

9'6" x 8'2" (2.90 m x 2.50 m)

Good size single room.

Energy Efficiency Rating		
	Current	Potential
Very energy efficient - lower running costs		
(92 plus) A		
(81-91) B		87
(69-80) C	70	
(55-68) D		
(39-54) E		
(21-38) F		
(1-20) G		
Not energy efficient - higher running costs		

BATHROOM

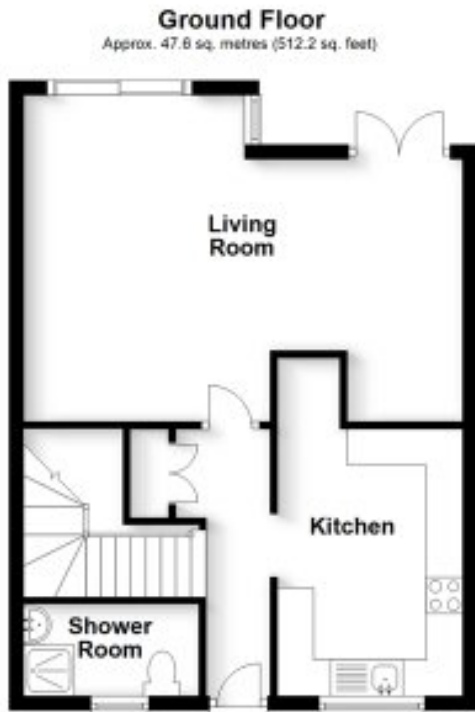
9'2" x 5'3" (2.80 m x 1.60 m)

Bath with shower over, basin and WC.

Garden at the rear with large shed.

Off street parking in car park. Not allocated..

Council Tax Band: C



Applying for a Property

British or Irish Citizens must evidence their right to rent from the documents listed below.

Either:

- a passport
- a travel document issued by the Home Office
- an immigration status document sent to you when you were given permission to stay in the UK

All of the above must include a Home Office endorsement. For example, a stamp or a vignette (sticker) inside. This must say you have one of the following

- indefinite leave to enter or indefinite leave to remain in the UK
- no time limit to your stay in the UK
- a certificate of entitlement to the right of abode
- exemption from immigration control
- limited leave to enter or limited leave to remain in the UK, or permission to stay for a time limited period - this must cover the time you'll be renting
- a certificate of entitlement to readmission to the UK

Non British or Irish Citizens will need to obtain a share code and including the following documentation to indicate the named person may stay in the UK. <https://www.gov.uk/prove-right-to-rent/get-a-share-code-online>

Either:

- a British passport (current or expired)
- an Irish passport or passport card (current or expired)
- a certificate of registration or naturalisation as a British citizen

OR

Two of the following:

- a current UK driving licence (full or provisional)
- a full birth or adoption certificate from the UK, Guernsey, Jersey, the Isle of Man or Ireland
- a letter from your employer
- a letter from a British passport holder in an accepted profession
- a letter from a UK government department or local council
- proof that you currently receive benefits
- a letter from a British school, college, or university that you currently go to
- a Disclosure and Barring Service (DBS) certificate
- proof that you have served in the UK armed forces
- a letter from a private rented sector access scheme or a voluntary organisation assisting you with housing
- a letter confirming you have been released from prison within the past 6 months
- a letter confirming you are on probation from your offender manager
- a letter from the UK police about the theft of your passport

These checks need to be followed up either 12 months from the date of the previous check, or before the expiry of the person's right to live in the UK. Copies of these documents are kept and will also be sent to our reference company so they can be verified

Important

All applications and negotiations are subject to contract, successful referencing and landlord approval. The payment of the initial monies will be deemed as acceptance of these terms.

Deposit held during the tenancy:

The security deposit of no more than the equivalent of 5 weeks' rent (or 6 weeks' for a property with a rent of over £50,000 per year), is held during the tenancy and this, together with the initial rent payment, is to be received by Pocock & Shaw before the tenancy can commence.

Other costs a tenant may incur

In addition to the deposit and rent, a tenant may potentially be charged for the following when required:

1. A holding deposit of no more than one weeks' rent;
2. A default fee for late payment of rent (after 14 days);
3. Reasonable charges for lost keys or security fobs;
4. Costs associated with contract variation when requested by the tenant, at £50, or reasonable costs incurred if higher.
5. Costs associated with early termination of the tenancy, when requested by the tenant; and
6. Costs in respect of bills - utilities, communication services, TV licence, council tax and green deal or other energy efficiency charges.