

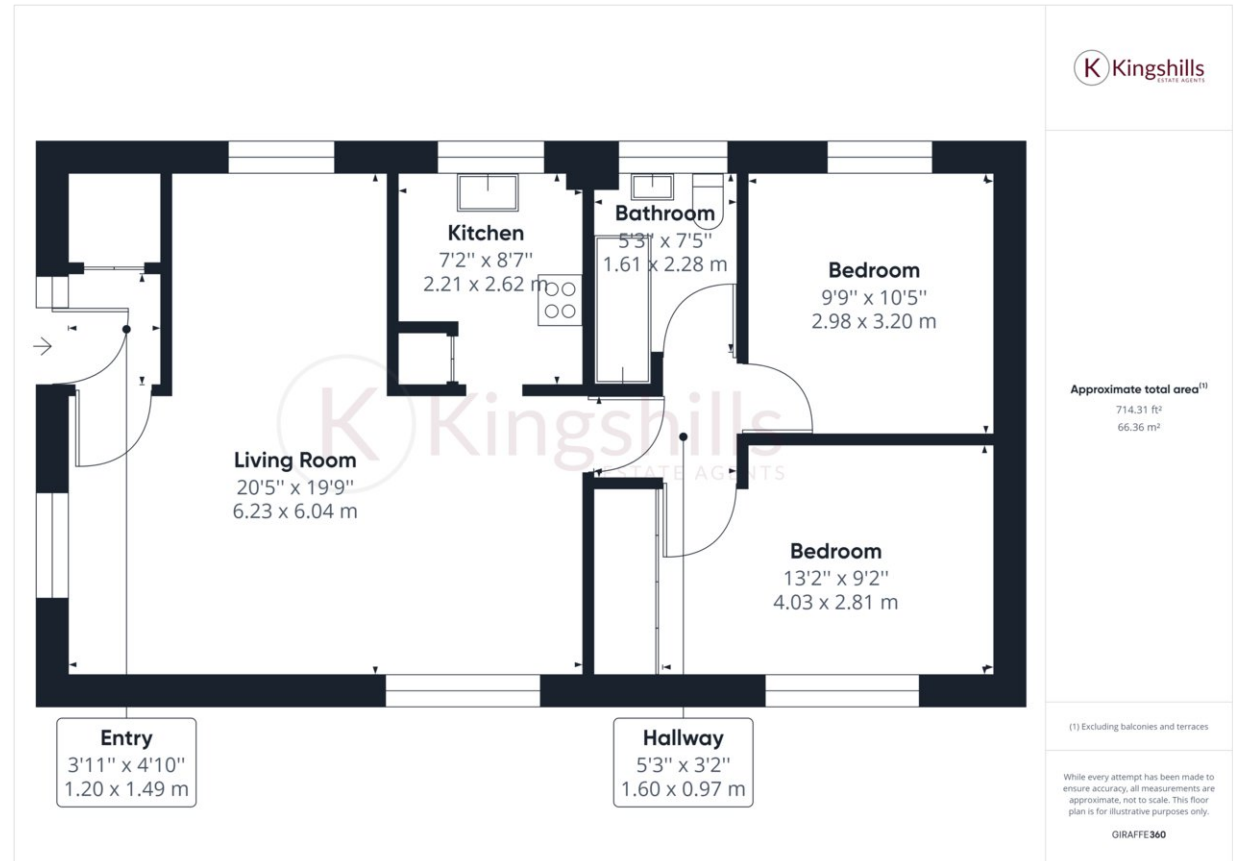


Property Description

A modern and well-presented two-bedroom maisonette, located in a popular estate in Hazlemere which benefits from a communal garden. The property is located within walking distance to local shops, cafes, and parkland. The accommodation comprises; private entrance which leads to a porch area with storage; a bright and spacious living/dining room; modern kitchen with a range of appliances included a dishwasher; two double bedrooms and modern bathroom with a shower. This maisonette offers spacious living accommodation with lots of natural light, in a nice quiet residential area. Available from 9th November on an unfurnished basis.

COUNCIL TAX C

EPC RATING D



Kingshills Estate Agents
Comet Studios
Amersham
Buckinghamshire
HP7 0PX

01494 939868
hello@kingshills.co.uk
kingshills.co.uk

Agents Note: Whilst every care has been taken to prepare these particulars, they are for guidance purposes only. All measurements are for general guidance purposes only and whilst every care has been taken to ensure accuracy, they should not be relied upon and potential buyers/tenants are advised to recheck the measurements