



Westfields House, London Road, High Wycombe, Buckinghamshire, HP11 1HA

Asking Price | £1,400

## Property Description

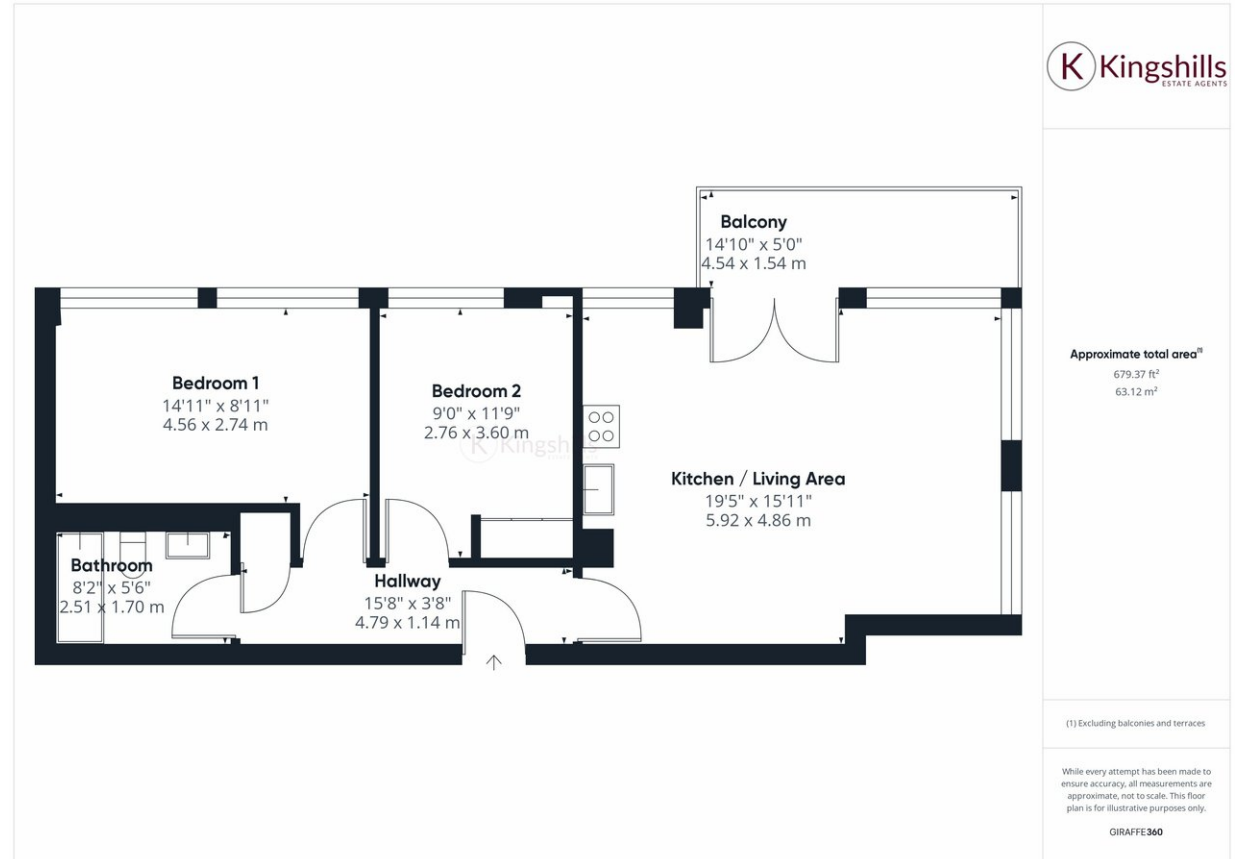
A modern third floor apartment with a balcony enjoying views over Kingsmead Park. The accommodation has an entrance hallway with doors leading to an open planned kitchen/living room with a balcony, Two Double Bedrooms and a Bathroom. There is secure gated allocated parking within the development.

High Wycombe Retail Park is within walking distance offering a variety of shopping and leisure facilities. In the town centre the bustling Eden shopping centre can be found offering a huge range of busy restaurants and bars, the town is fast becoming the place to live. Placed at Junction 4 of the M40 and having a train station in the centre offering a 24-minute commute to London Marylebone, High Wycombe is an ideal location to commute from.

Available 8th April. Unfurnished.

COUNCIL TAX C

EPC RATING D



Kingshills Estate Agents  
Comet Studios  
Amersham  
Buckinghamshire  
HP7 0PX

01494 939868  
hello@kingshills.co.uk  
kingshills.co.uk

Agents Note: Whilst every care has been taken to prepare these particulars, they are for guidance purposes only. All measurements are for general guidance purposes only and whilst every care has been taken to ensure accuracy, they should not be relied upon and potential buyers/tenants are advised to recheck the measurements