



Property Features

- Village Location
- Semi Detached
- Three Reception Rooms
- Kitchen/Breakfast Room
- Three Bedrooms
- Cloakroom
- Garden
- Garage
- Unfurnished
- Available 30th August

Full Description

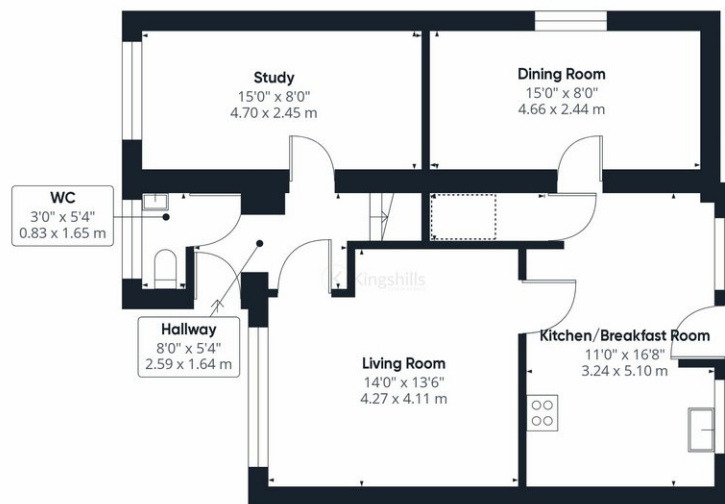
A well presented semi-detached property located in the quiet village of Prestwood and is ideally located for the village amenities and excellent local schooling.

This property consists of; three reception rooms, kitchen/breakfast room, cloakroom, three bedrooms (2 doubles and 1 single), family bathroom, garage and garden.

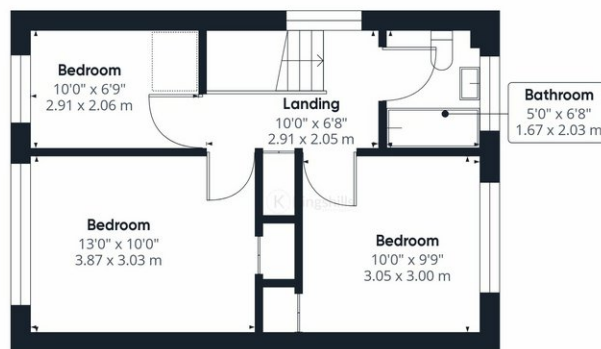
Available 30th August on an unfurnished basis.







Ground Floor



Floor 1

Approximate total area^m

1087.8 ft²
101.06 m²

Reduced headroom

9.69 ft²
0.9 m²

(1) Excluding balconies and terraces

Reduced headroom
(below 1.5m/4.92ft)

While every attempt has been made to ensure accuracy, all measurements are approximate, not to scale. This floor plan is for illustrative purposes only.

GIRAFFE360