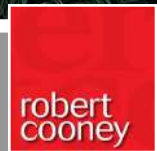




6 Belmont Drive Taunton TA1 4QB





In this superb private elevated cul de sac location with extensive views towards The Quantock Hills and within half a mile of the town centre is this well presented 5 bedroomed detached architecturally designed house with 3 reception rooms, gardens of approximately 0.3 acres, garage and driveway parking.





Features

- Entrance Hall
- Dining Room
- Living Room with woodburner
- Fitted Kitchen
- Utility Room with door to garden and garage
- Family Room
- Cloakroom
- Downstairs Shower Room
- Master Bedroom
- 4 Further Bedrooms
- Family Bathroom

- Established West facing garden of approximately 0.3 acre with views towards Quantock Hills
- Garage and driveway parking

- Gas central heating
- Double glazing
- Castle School catchment
- Council tax band F

- What3words:
///found.pots.modern







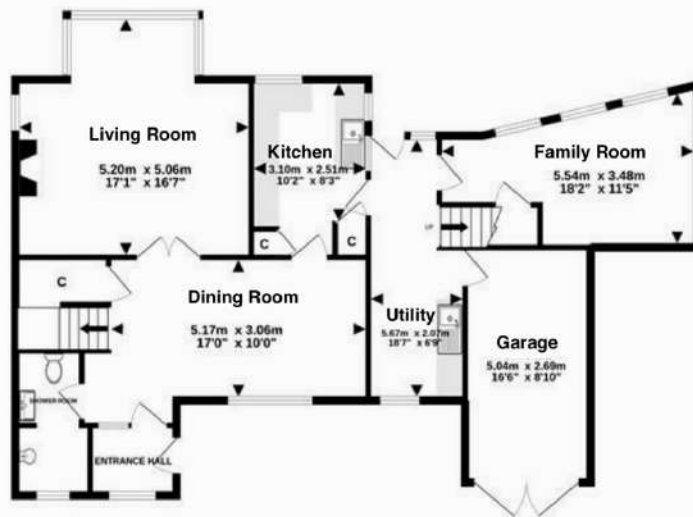
Belmont Drive is located in the grounds of Belmont House, a substantial Grade II Listed property and within a few minutes' walk of the centre of Taunton, the County Town of Somerset.

The town is bustling and forward-looking with excellent amenities including a good selection of independent and high street shops, distinctive restaurants, cafés, a wealth of history and sporting facilities including the County Cricket Ground.

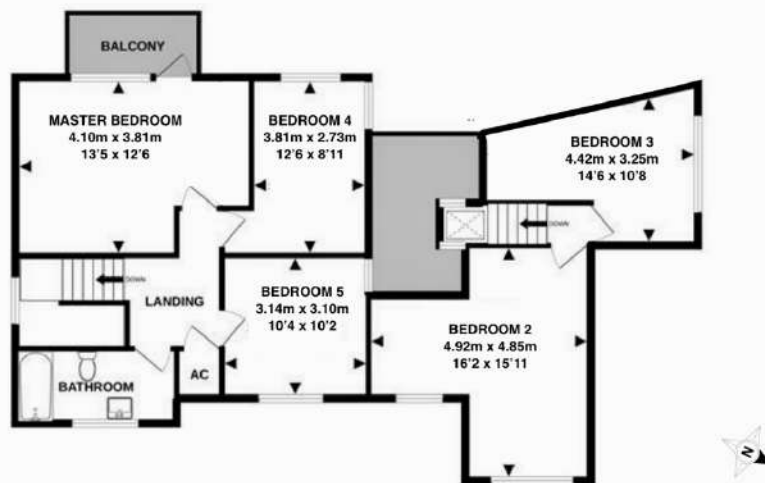
Taunton benefits from a main line railway station linking to London Paddington in less than 2 hours and excellent access for the M5 motorway at junction 25, situated on the eastern side of the town. International airports can be found within an hour's drive at Exeter and Bristol.



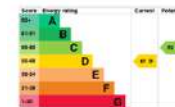
GROUND FLOOR
102.2 sq.m. (1100 sq.ft.) approx.



1ST FLOOR
86.4 sq.m. (930 sq.ft.) approx.



TOTAL FLOOR AREA : 188.6 sq.m. (2030 sq.ft.) approx.
Made with Metropix ©2022



Viewing strictly through the selling agents:

Robert Cooney

Corporation Street, Taunton,
Somerset TA1 4AW

Telephone 01823 230 230

E-mail taunton@robertcooney.co.uk

Website www.robertcooney.co.uk

**robert
cooney**

