



IVORY HOUSE

Turton

MAISON HAUS

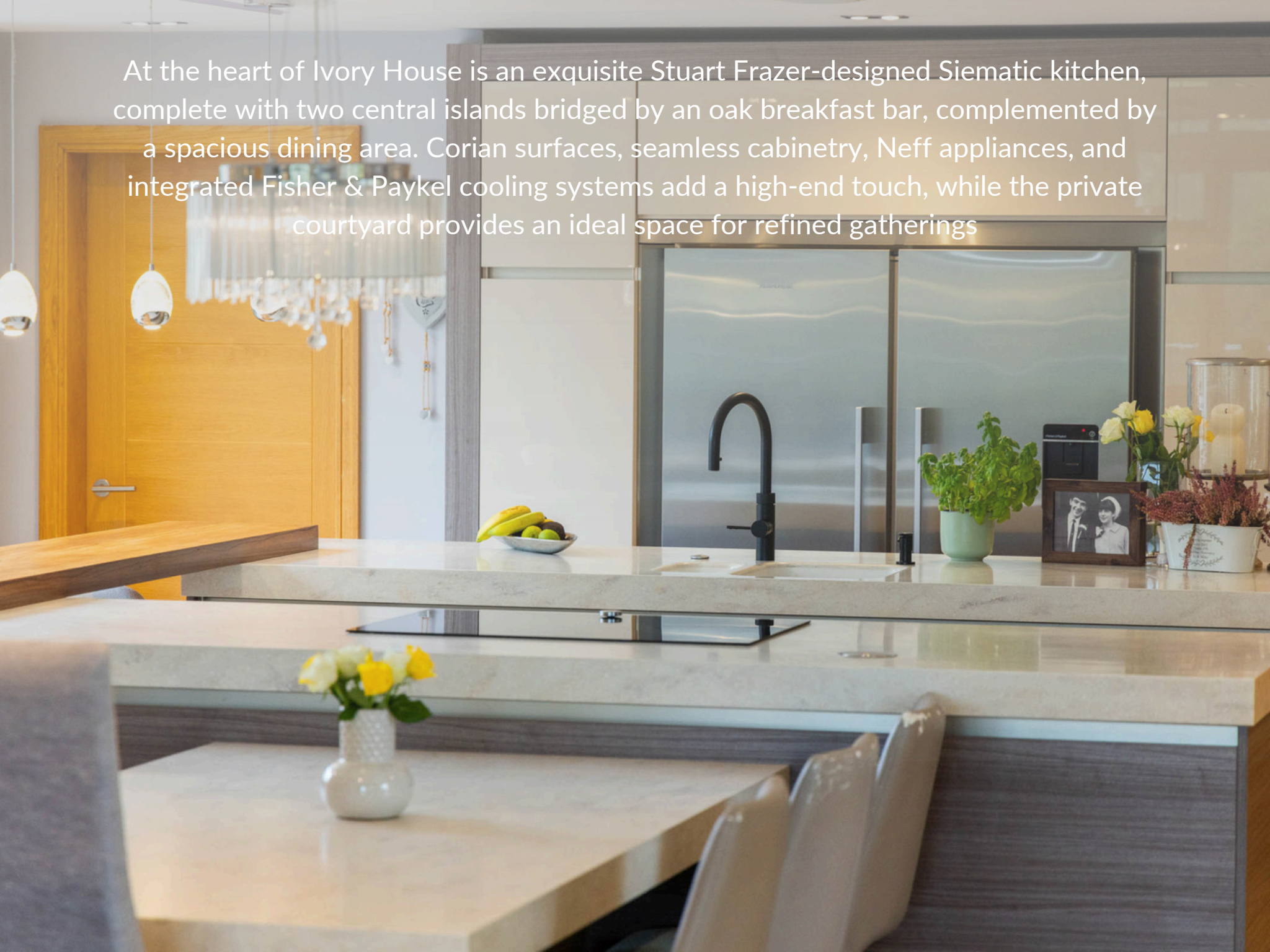
IVORY HOUSE

Discover an unparalleled opportunity with Ivory House, a masterpiece of modern architecture nestled within the serene hillside, boasting sweeping, unobstructed views over the breathtaking Turton countryside

Approach Ivory House through a tree-lined cobbled lane, where the electric-gated entrance opens to a private drive spacious enough to house a collection of vehicles. The landscaped front garden is complemented by a manicured lawn, stone borders, and tasteful architectural touches



At the heart of Ivory House is an exquisite Stuart Frazer-designed Siematic kitchen, complete with two central islands bridged by an oak breakfast bar, complemented by a spacious dining area. Corian surfaces, seamless cabinetry, Neff appliances, and integrated Fisher & Paykel cooling systems add a high-end touch, while the private courtyard provides an ideal space for refined gatherings







The lounge at Ivory House exudes elegance and warmth, centered around a striking Chesney's wood-burning log burner framed by exposed brick, a rich oak mantel, and slate hearth—inviting cozy evenings in a truly sophisticated setting. Elevated slightly within the open-plan layout, this lounge area enjoys a seamless flow with the adjoining kitchen and dining spaces, yet maintains a distinct sense of intimacy







Ivory House's design harmoniously connects the upper and lower levels with a beautifully crafted solid oak staircase, which stands as a central feature and flows seamlessly between floors. Bathed in natural light from the expansive glass wall, the staircase creates an airy, open atmosphere, enhancing the home's sense of spaciousness and unity. As you descend from the bright upper level, where the main living areas are, to the tranquil bedrooms below, the abundance of natural light and warm oak finishes provide a welcoming transition. This thoughtful design captures both elegance and practicality, blending modern architecture with inviting warmth









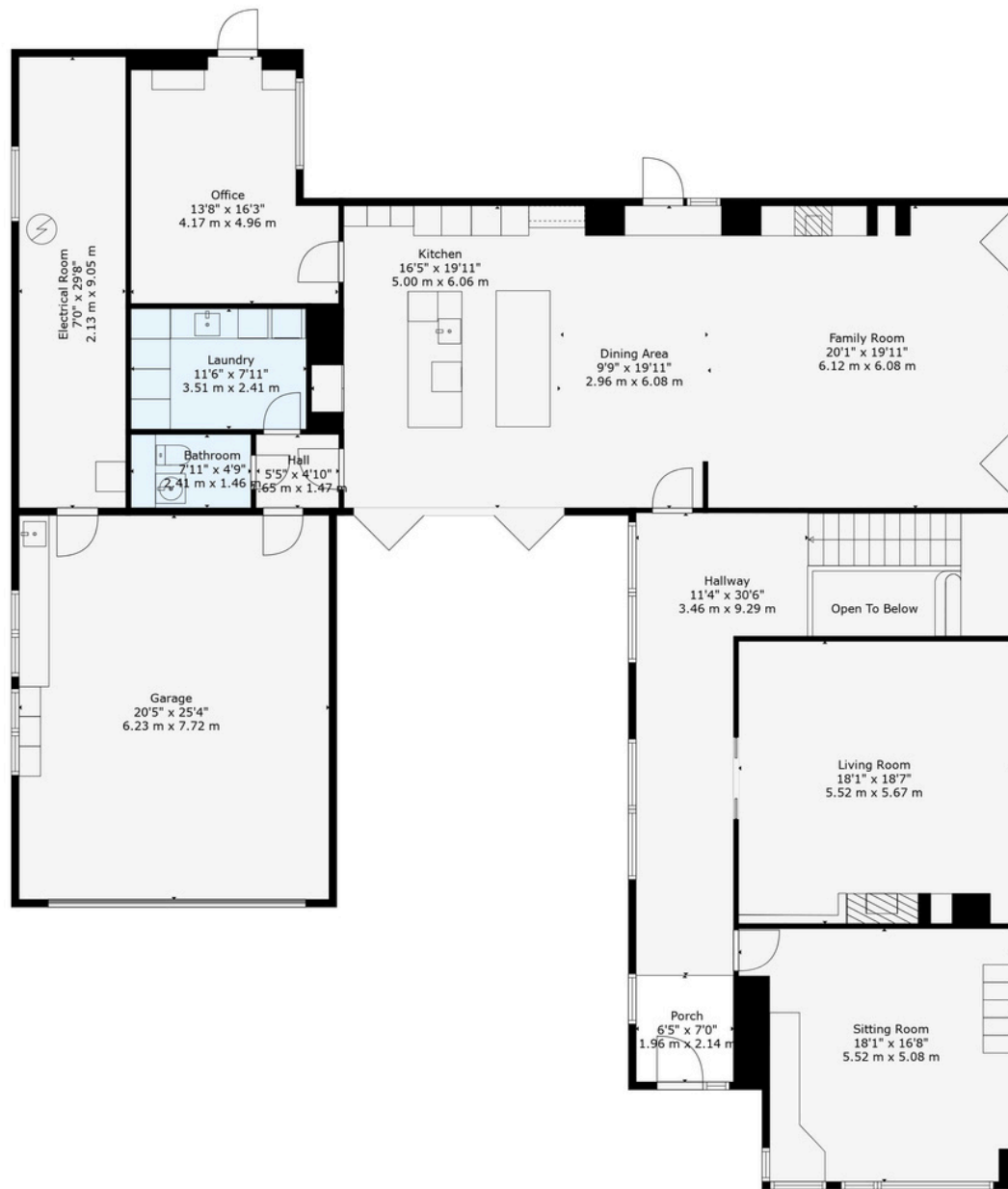
The outdoor spaces at Ivory House are as thoughtfully designed as the interiors, blending seamlessly with the natural beauty of the Turton countryside. Set on an elevated, landscaped plot, the grounds offer a perfect harmony of manicured gardens, lush lawns, and charming stone borders that mirror the home's modern architecture. Electric gates open onto a private drive, leading to a meticulously landscaped front garden that's a testament to understated elegance. This two-tiered plot adds to the property's allure, with an upper level housing the residence and outdoor entertaining areas, while the lower level provides additional green space for a variety of uses



From nearly every vantage point outdoors, Ivory House offers expansive, uninterrupted views of the countryside. The wraparound balcony and elevated back garden allow for a breathtaking perspective over rolling hills and verdant landscapes, creating a private oasis that feels worlds away from everyday life. Whether enjoying a sunrise with a morning coffee or watching the sun set across the horizon, these views make every moment here feel extraordinary, embodying the serenity and beauty of a rural retreat

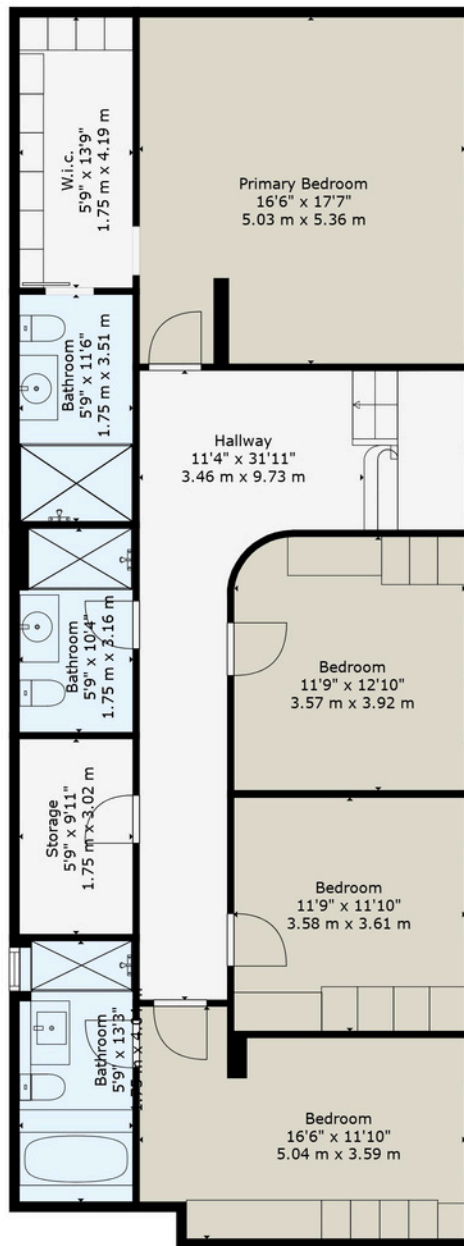


Perfectly suited for alfresco entertaining, the outdoor areas at Ivory House are designed to accommodate both intimate gatherings and larger events. The private courtyard extends directly from the kitchen, providing a sheltered space reminiscent of a Mediterranean villa, ideal for relaxed summer dining. A retractable awning offers shade on warmer days, while the wraparound balcony serves as a perfect spot for sunset cocktails, surrounded by lush greenery. With ample patio space and potential for a landscaped terrace, Ivory House effortlessly extends its luxurious indoor ambiance into the open air, making it a stunning setting for outdoor entertaining in all seasons



BELOW GROUND: 1331 sq. ft, 124 m², FLOOR 2: 2231 sq. ft, 207 m²
 EXCLUDED AREAS: STORAGE: 57 sq. ft, 5 m², GARAGE: 517 sq. ft, 48 m², PORCH: 45 sq. ft, 4 m²,
 ELECTRICAL ROOM: 209 sq. ft, 19 m², OPEN TO BELOW: 35 sq. ft, 3 m²





BELOW GROUND: 1331 sq. ft, 124 m², FLOOR 2: 2231 sq. ft, 207 m²
 EXCLUDED AREAS: STORAGE: 57 sq. ft, 5 m², GARAGE: 517 sq. ft, 48 m², PORCH: 45 sq. ft, 4 m²,
 ELECTRICAL ROOM: 209 sq. ft, 19 m², OPEN TO BELOW: 35 sq. ft, 3 m²



Ivory House
Station Road
Turton
BL7 0HE

Guide Price: £1,500,000
Tenure: Freehold (to be confirmed by solicitors)
Local Authority: Blackburn with Darwen
EPC Rating: B

CONTACT US:

The Place, Mill Lane, Alderley Edge, SK9 7TY
Moving@Maison.Haus
01625 919 079

Important Notice:

Maison Haus Limited, their solicitors and joint agents give notice that:

1. They are not authorised to make or give any representations or warranties in relation to the property either here or elsewhere, either on their own behalf or on behalf of their client or otherwise. They assume no responsibility for any statement that may be made in these particulars. These particulars do not form part of any offer or contract and must not be relied upon as statements or representation of fact.

2. Any areas, measurements or distances are approximate. The text, photographs and plans are for guidance only and are not necessarily comprehensive. It should not be assumed that the property has all necessary planning, building regulations or other consents and Maison Haus Limited have not tested any services, equipment or facilities. Purchasers must satisfy themselves by inspection or otherwise.