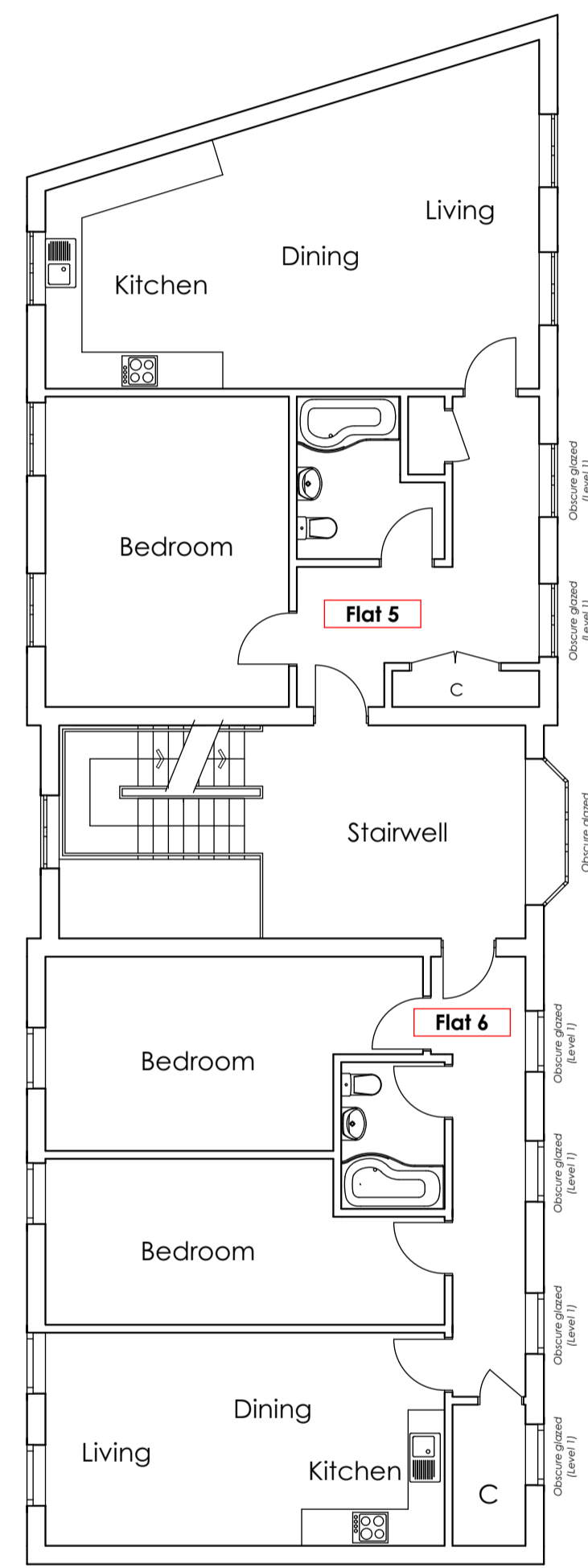
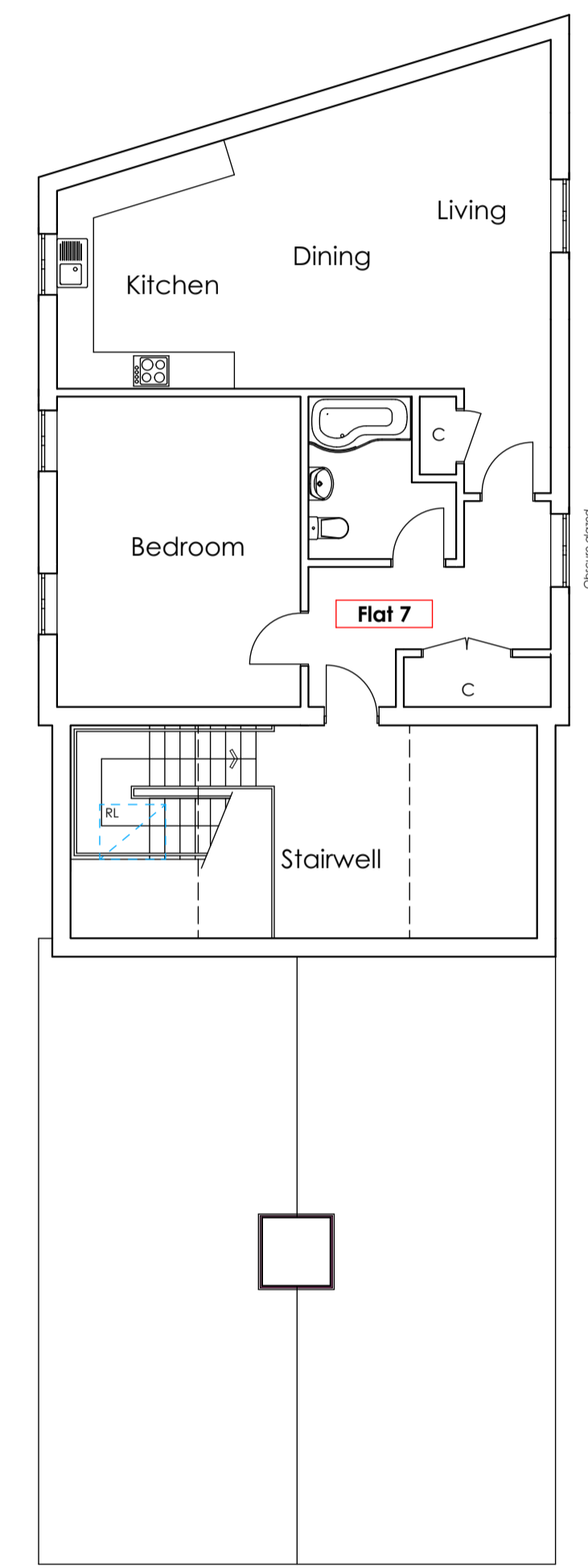


GROUND



FIRST



SECOND

FLOOR PLANS OF PROPOSED NEW BUILD BLOCK (1/100 @ A1)

Notes

Rev B	French doors to Flats 1 & 2 changed to windows. Flats 6 & 7 shown as 1 bed	Feb 2023
Rev A	Amendments for planning resubmission	Dec 2022
Revision	Description	Date



Maypole Court, 2 High Street, Wem, Shropshire, SY4 5AA
 Telephone: 01909 235 303 Fax: 01909 235 344
 E-mail: info@bleazardandgalletta.com
 Web: www.bleazardandgalletta.com

Project Location
**The Old Post Office,
 25 High Street, Wem, SY4 5DG**

Project Description
Redevelopment of Site

Client
Mr G Lewis, N Rutter & J Page.

Drawing
Floor Plans of New Build Block

Scale 1:100 @ A1 Date Oct 2021

Drawing Number
2067 D 201B

THE COPYRIGHT OF THIS DRAWING IS VESTED IN BLEAZARD AND GALLETTA LLP AND CANNOT BE COPIED OR REPRODUCED IN WHOLE OR IN PART WITHOUT THEIR WRITTEN CONSENT. DO NOT SCALE FROM THIS DRAWING. REPORT ANY ERRORS IMMEDIATELY.