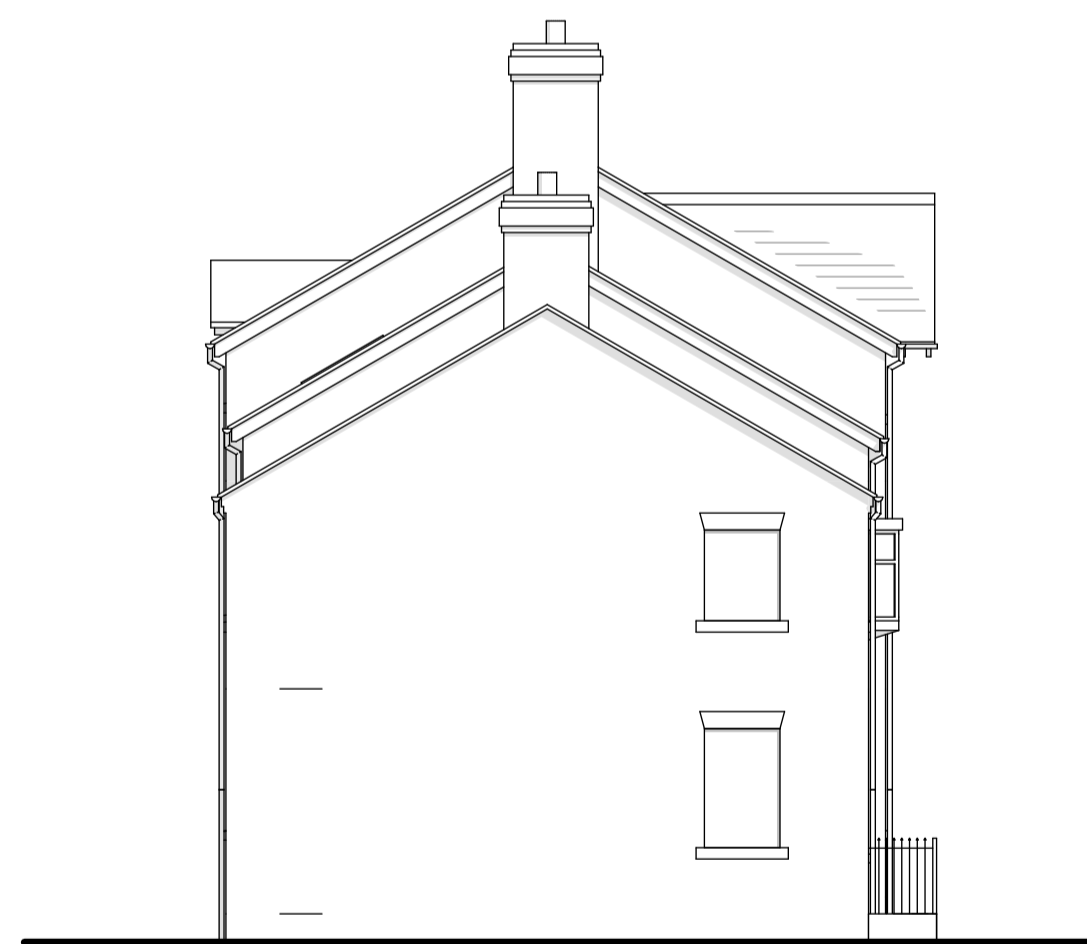


Notes



EAST (FACING LEEK STREET)

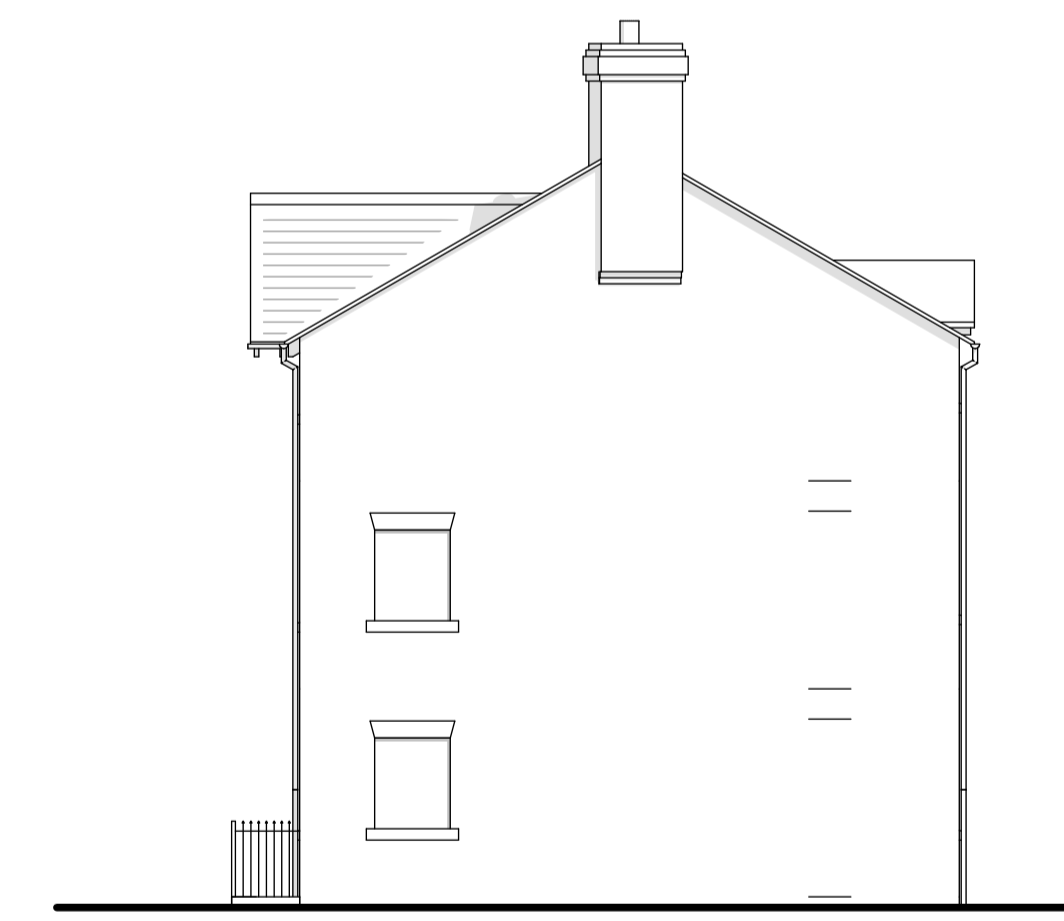


SOUTH (FACING GABLE OF NO 6 LEEK STREET)



WEST (FACING INTO COURTYARD)

ELEVATIONS OF PROPOSED NEW BUILD BLOCK (1/100 @ A1)



NORTH (FACING BACK OF NO 19 HIGH STREET)

Rev B	French doors to Flats 1 & 2 changed to windows	Feb 2023
Rev A	Amendments for planning resubmission	Dec 2022
Revision	Description	Date



Maypole Court, 2 High Street, Wem, Shropshire, SY4 5AA
 Telephone: 01909 235 303 Fax: 01909 235 344
 E-mail: info@bleazardandgalletta.co.uk
 Web: www.bleazardandgalletta.co.uk

Project Location

The Old Post Office,
 25 High Street, Wem, SY4 5DG

Project Description
 Redevelopment of Site

Client
 Mr G Lewis, N Rutter & J Page.

Drawing
 Elevations of New Build Block

Scale 1:100 @ A1 Date Oct 2021

Drawing Number
 2067 D 200B

THE COPYRIGHT OF THIS DRAWING IS VESTED IN BLEAZARD AND GALLETTA LLP AND CANNOT BE COPIED OR REPRODUCED IN WHOLE OR IN PART WITHOUT THEIR WRITTEN CONSENT. DO NOT SCALE FROM THIS DRAWING. REPORT ANY ERRORS IMMEDIATELY.