

Moving You



Elizabeth Way, Mangotsfield

03334041188 option 3

Asking Price £375,000

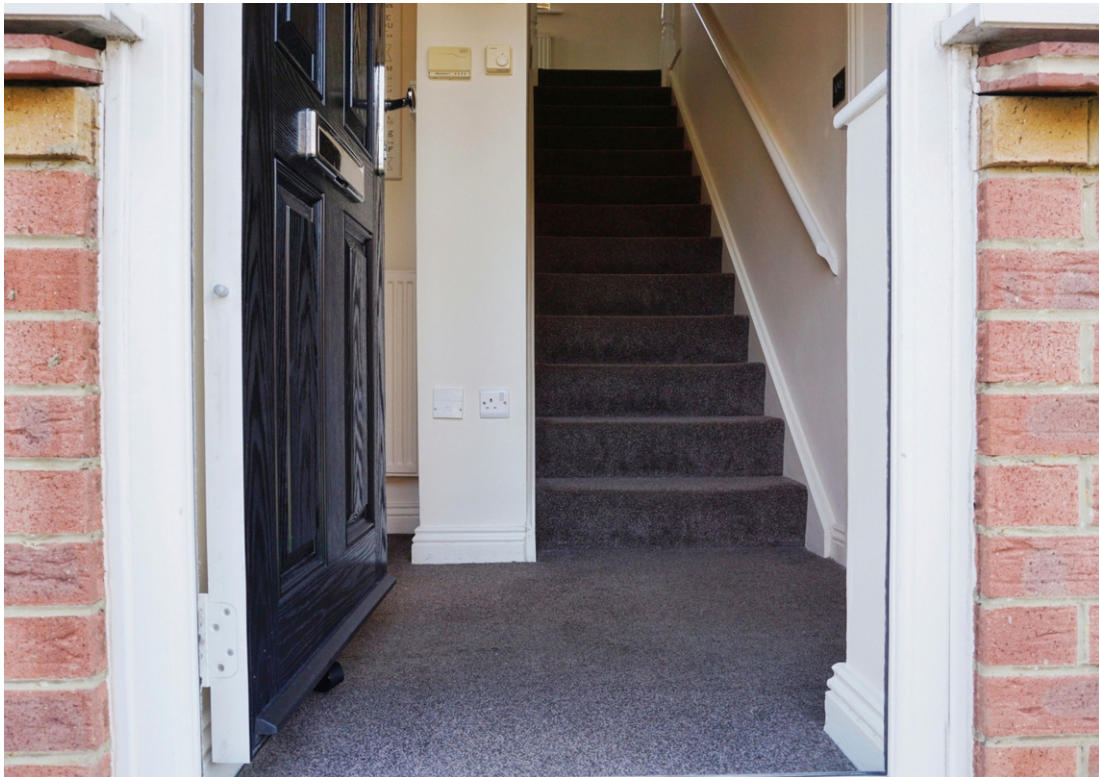
[guy.rolfe@moving-you.co.uk](mailto:guy.rolfe@moving-you.co.uk)

Freehold

[www.moving-you.co.uk](http://www.moving-you.co.uk)









## Elizabeth Way, Bristol, BS16 9LN

This charming detached property offers a perfect family home, boasting two reception rooms, a well-equipped kitchen with utility room and downstairs W.C and three bedrooms including a luxurious en-suite master. Outside, enjoy a garage, parking, and delightful garden. Situated in a sought-after location near schools and green spaces, this home combines convenience with tranquility. Features include double glazing, gas central heating, and ample storage. Don't miss this opportunity for a well-maintained home in a family-friendly area.

Welcome to this charming detached property in good condition, perfect for families looking for a new home. This lovely house features two reception rooms, ideal for entertaining guests or simply relaxing with your loved ones. The kitchen comes with a convenient utility room, offering extra space for storage, laundry needs and a downstairs W.C.

With three bedrooms, there is plenty of space for everyone in the family. The master bedroom boasts an en-suite shower room and built-in wardrobes, providing a luxurious and organised living space. The second bedroom is a comfortable double room with built-in wardrobes, while the third bedroom is a cosy single room.

The property benefits from a garage, parking facilities, and a delightful garden, creating the perfect outdoor space for children to play or for hosting summer barbecues. Situated in a desirable location near schools, green spaces, and cycling routes, this home offers both convenience and tranquillity.

The property is in Council Tax Band D, making it an attractive choice for those looking for a well-maintained home in a family-friendly area.

Don't miss out on the opportunity to make this wonderful property your new home!



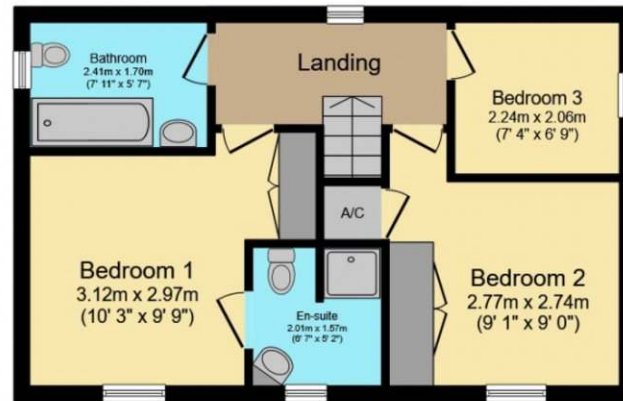








**Ground Floor**



**First Floor**

Total floor area 78.8 m<sup>2</sup> (848 sq.ft.) approx

This plan is for illustration purposes only and may not be representative of the property. Plan not to scale. Powered by PropertyBox

Guy Rolfe Moving You

03334041188 option 3

[guy.rolfe@moving-you.co.uk](mailto:guy.rolfe@moving-you.co.uk)

PROPERTY MISDESCRIPTIONS ACT 1991: The Agents has not tested any apparatus, equipment, fixtures and fittings, or services, so cannot verify that they are in working order or fit for the purpose. The buyer is advised to obtain verification from his or her Professional Buyer, References to the Tenure of the property are based on information supplied by the Vendor. The agents have not had sight of the title documents. The buyer is advised to obtain verification from their Solicitor. You are advised to check the availability of any property before travelling any distance to view.

[www.moving-you.co.uk](http://www.moving-you.co.uk)