

**£1,230**

25 Paterson Drive, Stafford, Staffordshire,  
ST16 1WH



## Features

New built detached house, 3 toilets, one living room, 3 bedroom, 1 kitchen and dining

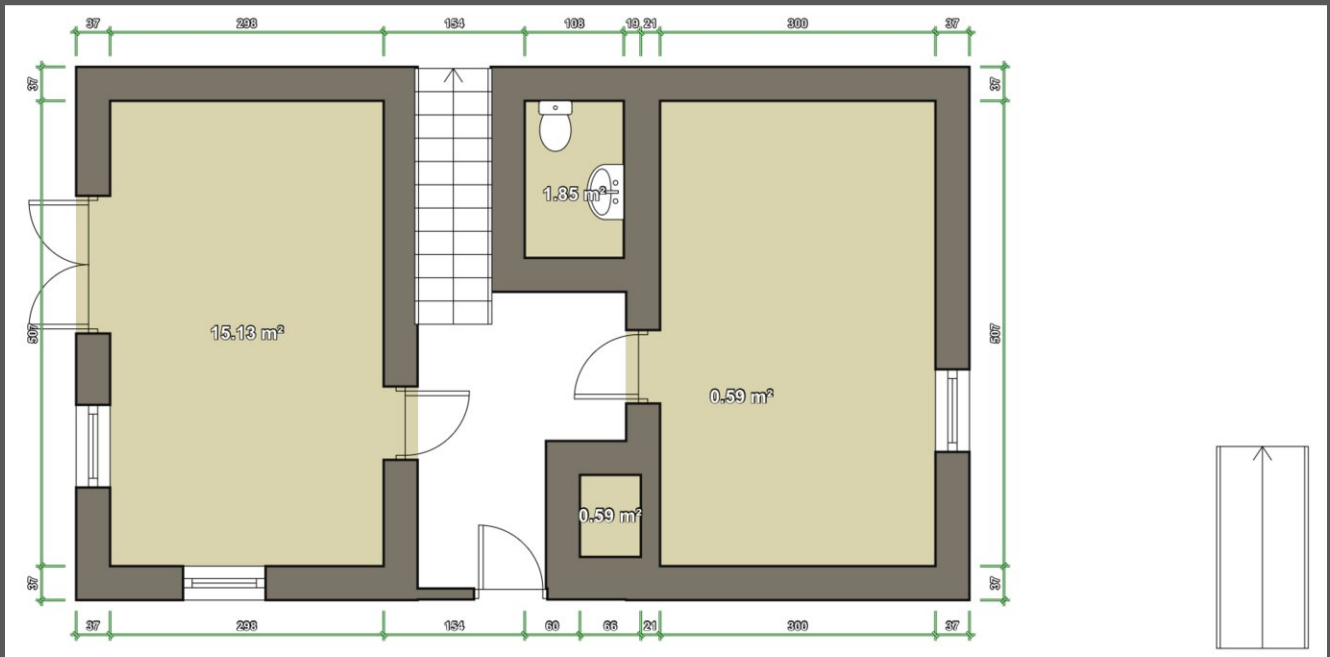
- 
- 
- 
- 
- 
- 
- 
- 
- 
- 

## Stafford

34 St. Georges Parkway,, Stafford, Staffordshire, ST16  
3W  
07454381501



# FLOORPLAN



# EPCs

## Stafford

34 St. Georges Parkway,, Stafford, Staffordshire, ST16  
3W  
07454381501

