



27 Willow Way, Princes Risborough, Buckinghamshire, HP27 9AY



Asking Price | £675,000

Property Features

- Extended Detached Family Home
- Cul-De-Sac Location
- Close to Train Station
- 4 Bedrooms
- 3 Reception Rooms
- Enclosed rear Gardens
- Driveway and Garage
- Catchment of Popular Schools
-
-

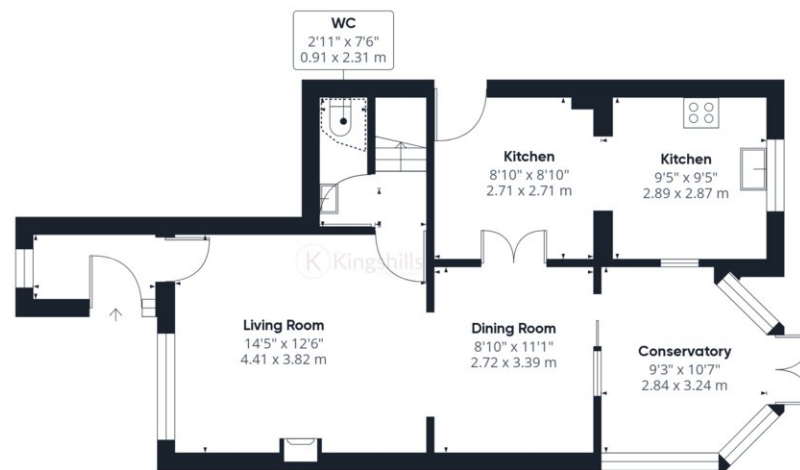
Full Description

A 4 bedroom detached home located towards the end of this popular road and within a short walk of Princes Risborough Train Station. This home has been extended over recent years to offer a conservatory and an extended Kitchen.

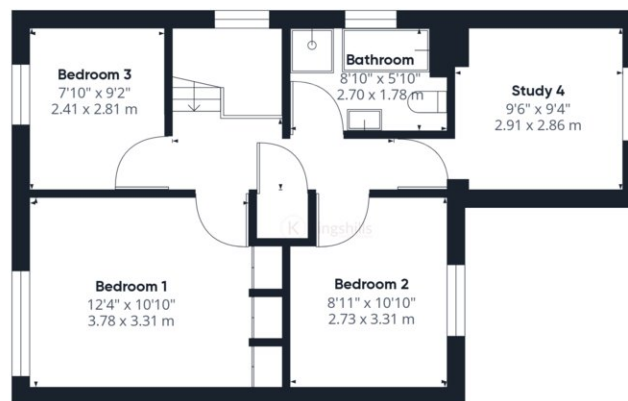
Entrance Porch, Living Room, separate Dining Room, Conservatory, Extended Kitchen. Downstairs Cloakroom, 4 bedrooms to the first floor and a family Bathroom. To the rear of the property is a low maintenance garden with parking to the front and integral garage.







Ground Floor



Floor 1

Approximate total area⁽¹⁾

1146 ft²
106.47 m²

Reduced headroom

7.91 ft²
0.73 m²

(1) Excluding balconies and terraces

☒ Reduced headroom
(below 1.5m/4.92ft)

While every attempt has been made to ensure accuracy, all measurements are approximate, not to scale. This floor plan is for illustrative purposes only.

GIRAFFE360