



16 Kendalls Close, High Wycombe, Buckinghamshire, HP13 7NN

Guide Price | £500,000

Property Features

- Extended Detached Bungalow
- Popular cul-de-sac
- Recently Refurbished
- 2 Large Bedrooms
- 2 Reception Rooms
- Landscaped garden
- Modern kitchen and bathroom
- Driveway Parking and Single Garage
- Close to schools
- EPC D / Council Tax Band D

Full Description

Welcome to this delightful detached bungalow located in a highly sought-after cul-de-sac in High Wycombe. Perfectly combining comfort and convenience, this beautifully extended property offers an ideal living space for those seeking a serene yet well-connected home.

The property has been thoughtfully extended offering versatile living space, ensuring there is plenty of room for all your needs. The generously sized living room is perfect for both entertaining and everyday living. With its expansive layout, this room easily accommodates various furniture arrangements, making it an adaptable space for your lifestyle.

The dining area conveniently flows into the modern kitchen making it a sociable space for preparing meals. There is ample cupboard space and worktop surfaces and the kitchen leads to a practical utility room.

Each bedroom provides ample space for relaxation, featuring large windows that invite plenty of natural light, creating a warm and inviting atmosphere. The contemporary bathroom is well-appointed, featuring high-quality fixtures and fittings designed for comfort and convenience.

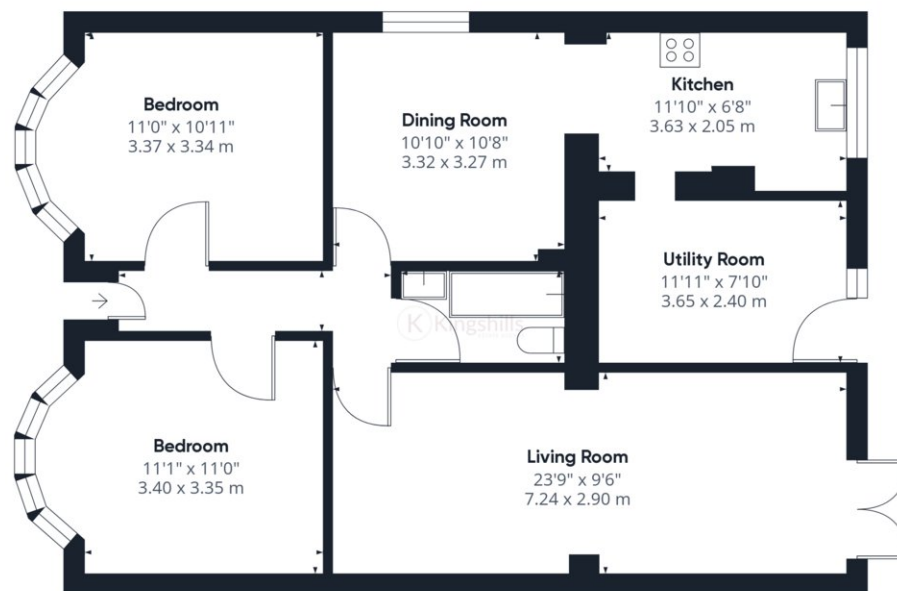
The garden has been landscaped and offers a perfect retreat to relax or is ideal for outdoor activities, gardening, or simply enjoying the fresh air. Situated in a popular cul-de-sac, this home is part of a friendly and welcoming neighborhood, perfect for families, couples, or individuals looking for a community feel.

Convenient driveway parking is available, providing easy and secure access to your home. This home also has the added benefit of a garage.

Located within easy reach of local shops, schools, and transport links, this bungalow offers both convenience and accessibility. This charming bungalow is not just a home; it's a lifestyle. Don't miss the opportunity to make it yours.







Ground Floor Building 1



Ground Floor Building 2

Approximate total area⁽¹⁾
1033.64 ft²
96.03 m²

(1) Excluding balconies and terraces

While every attempt has been made to ensure accuracy, all measurements are approximate, not to scale. This floor plan is for illustrative purposes only.

GIRAFFE360