

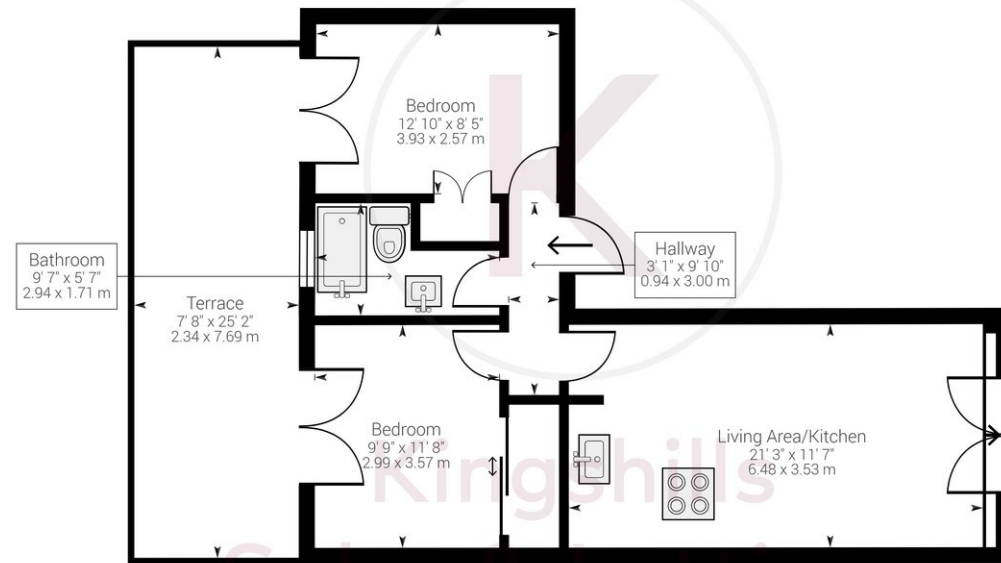


## Property Description

A two-bedroom apartment located in the heart of High Wycombe town centre, within a short stroll to the train station. The apartment benefits from a large roof terrace which enjoy views over High Wycombe. Internally the accommodation comprises; entrance hallway; two double bedrooms, both of which offer access to the roof terrace and storage space; bathroom; open plan kitchen/living area with Juliet balcony. Available NOW on an unfurnished basis.

COUNCIL TAX C

EPC RATING D



Approximate net internal area: 592.26 ft<sup>2</sup> (794.17 ft<sup>2</sup>) / 55.02 m<sup>2</sup> (73.78 m<sup>2</sup>)  
While every attempt has been made to ensure accuracy, all measurements are approximate, not to scale. This floor plan is for illustrative purpose only and should be used as such by any prospective tenant or purchaser.

Powered by Giraffe360

Kingshills Estate Agents  
Comet Studios  
Amersham  
Buckinghamshire  
HP7 0PX

01494 939868  
hello@kingshills.co.uk  
kingshills.co.uk

Agents Note: Whilst every care has been taken to prepare these particulars, they are for guidance purposes only. All measurements are for general guidance purposes only and whilst every care has been taken to ensure accuracy, they should not be relied upon and potential buyers/tenants are advised to recheck the measurements