



156 Kingsmead Road, High Wycombe, HP11 1JB

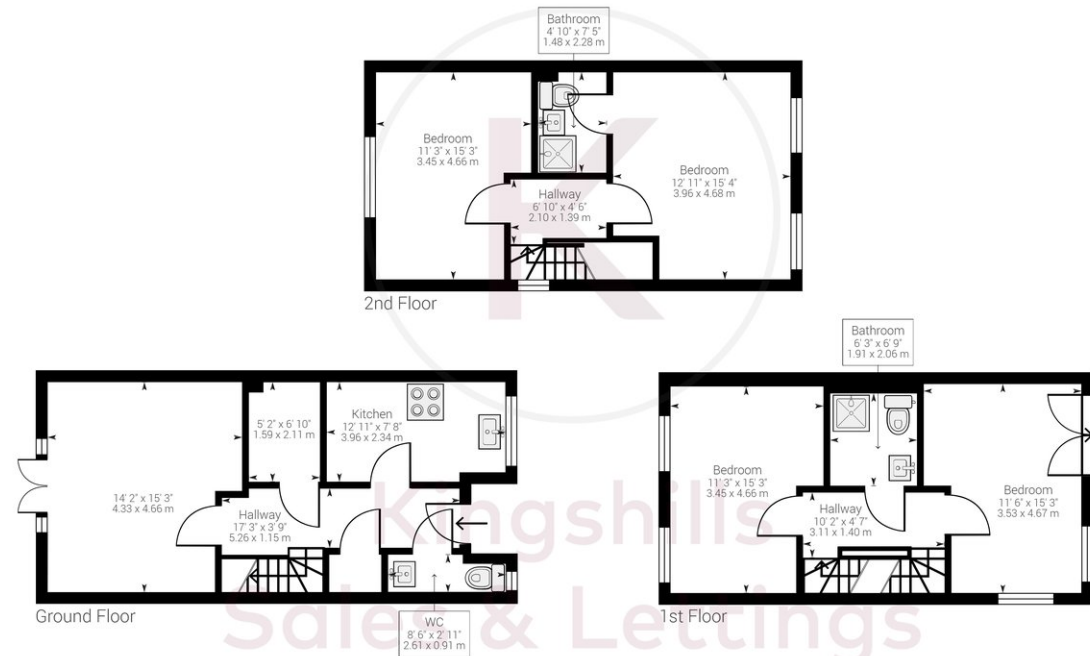
Asking Price | £2,250

Property Description

A modern semi-detached family home constructed by Redsky Homes. The property is located on the East Side of High Wycombe with easy access to Junction 3 of the M40. The home has been well maintained throughout and has lovely views over Kingsmead Playing Fields from the top floor windows. The accommodation comprises; entrance hall; downstairs cloakroom; kitchen/breakfast room with fitted appliances; utility room; living/dining Room. The first floor offers 2 bedrooms (principal bedroom with an en-suite), 2 further bedrooms to the second floor and family bathroom. The external of the property offers a terraced garden to the rear and off-road parking for 2 cars. Available late January. Unfurnished.

COUNCIL TAX E

EPC RATING B



Approximate net internal area: 1353.23 ft² / 125.72 m²

While every attempt has been made to ensure accuracy, all measurements are approximate, not to scale. This floor plan is for illustrative purpose only and should be used as such by any prospective tenant or purchaser.

Powered by Giraffe360

Kingshills Estate Agents
Comet Studios
Amersham
Buckinghamshire
HP7 0PX

01494 939868
hello@kingshills.co.uk
kingshills.co.uk

Agents Note: Whilst every care has been taken to prepare these particulars, they are for guidance purposes only. All measurements are for general guidance purposes only and whilst every care has been taken to ensure accuracy, they should not be relied upon and potential buyers/tenants are advised to recheck the measurements