

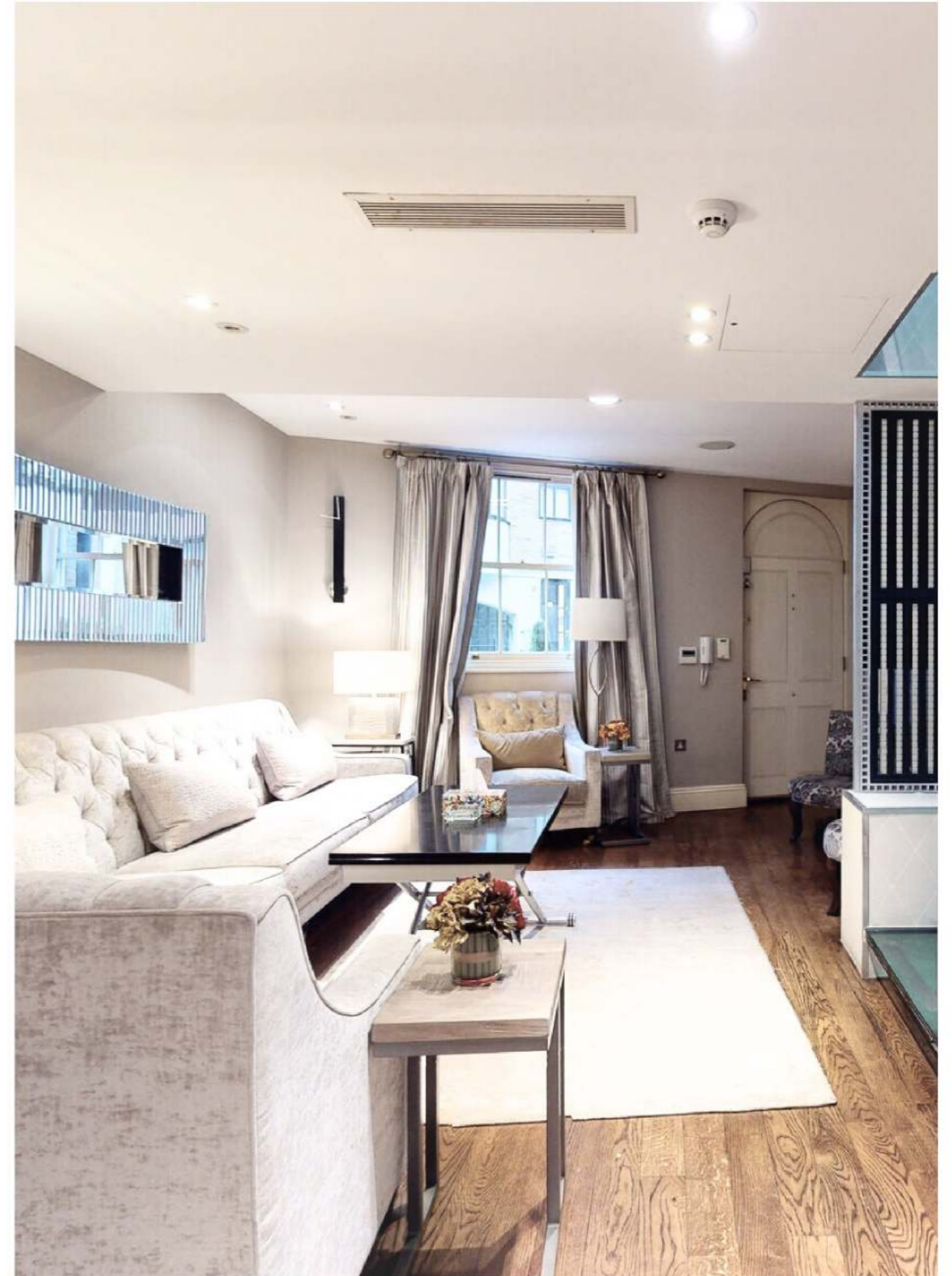


# Montpellier News

KNIGHTSBRIDGE SW7

A ONE-OF-A-KIND FREEHOLD TOWNHOUSE WITH  
PARKING SPACE AND COURTYARD

Indulge in the luxurious lifestyle of Knightsbridge with this recently refurbished 4-bedroom house. Located in London SW7, this stunning property covers an impressive 1,539 square feet of living space, featuring large windows that allow natural light to flood in, creating a bright and airy living experience.







## COMPREHENSIVE REDESIGN

This house has been comprehensively designed and redeveloped to create a new benchmark of quality.

## PRIME LOCATION

This is a rare opportunity to own such a unique townhouse located in the heart of Knightsbridge, where you can indulge in the luxurious lifestyle.

## STYLISH INTERIOR

The modern interior boasts a sleek and stylish design, with contemporary furnishings and state-of-the-art appliances. The property is equipped with air conditioning, an elevator, and a private courtyard, perfect for relaxing and enjoying the surrounding tranquility.

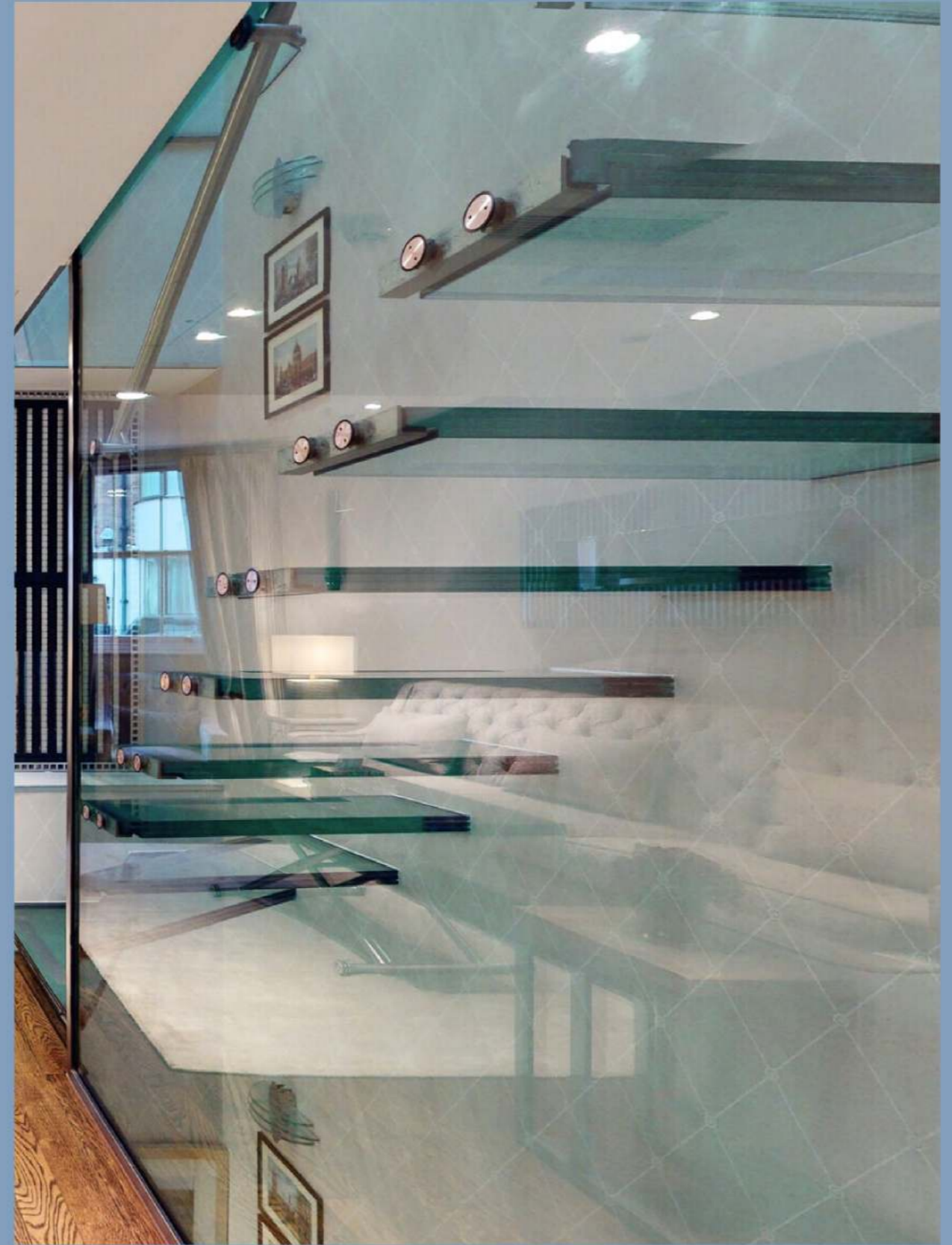
## SPACIOUS AND COMFORTABLE BEDROOMS

The spacious bedrooms feature comfortable bedding, plush carpeting, and ample storage space.

## PEACEFUL RETREAT IN THE HEART OF KNIGHTSBRIDGE

Located on a quiet street, this property provides a peaceful retreat in the heart of Knightsbridge, just moments away from the world-famous Harrods and the lush greenery of Hyde Park.

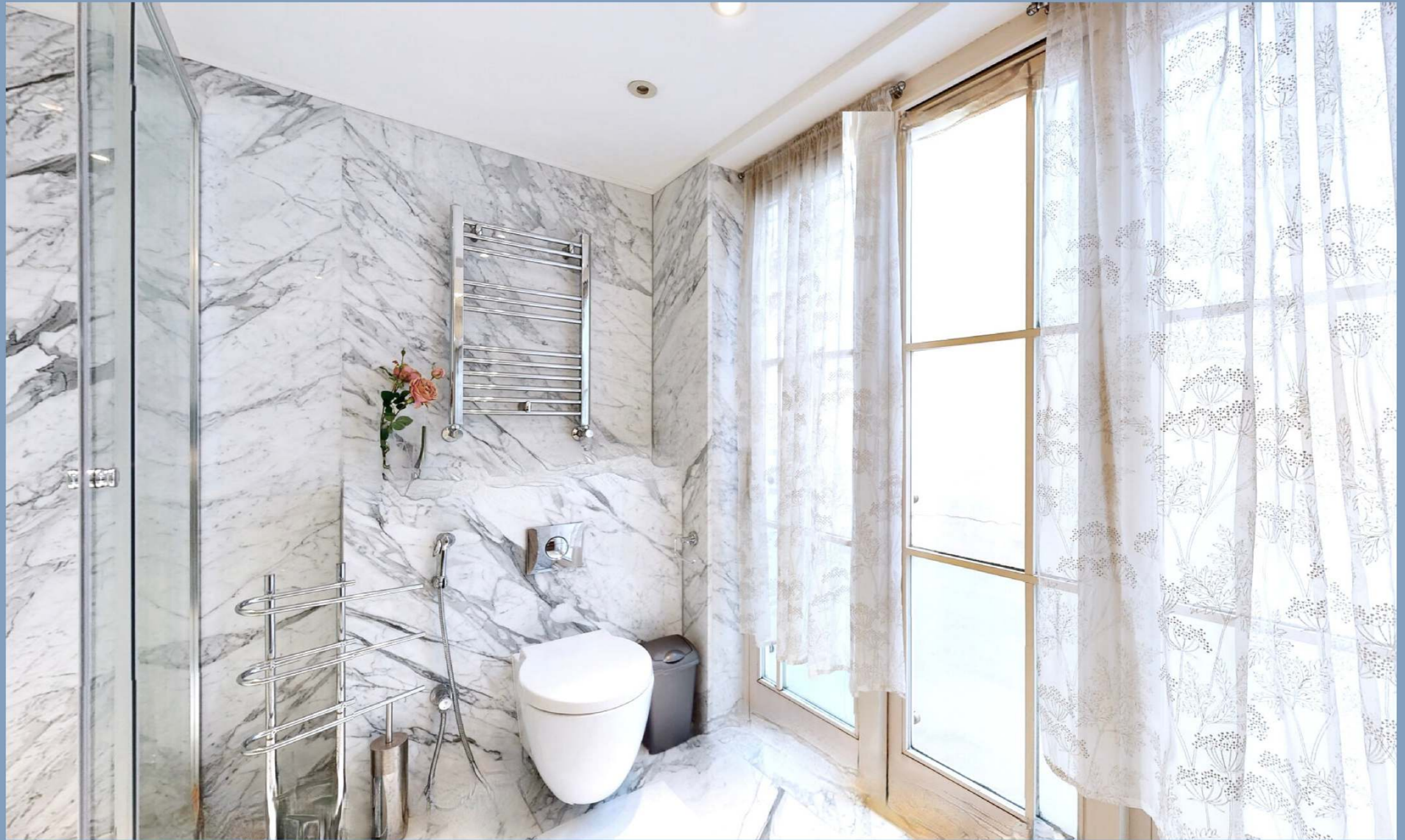






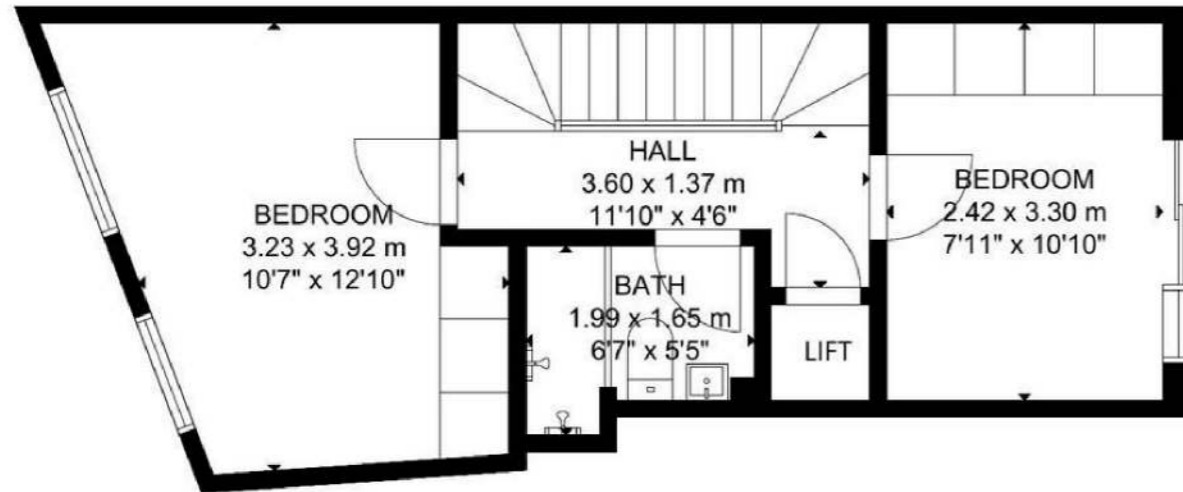




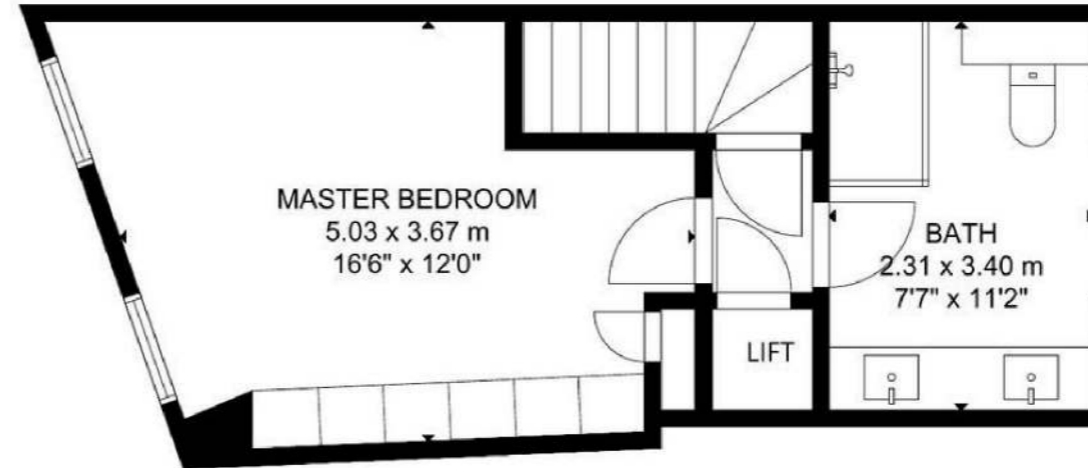




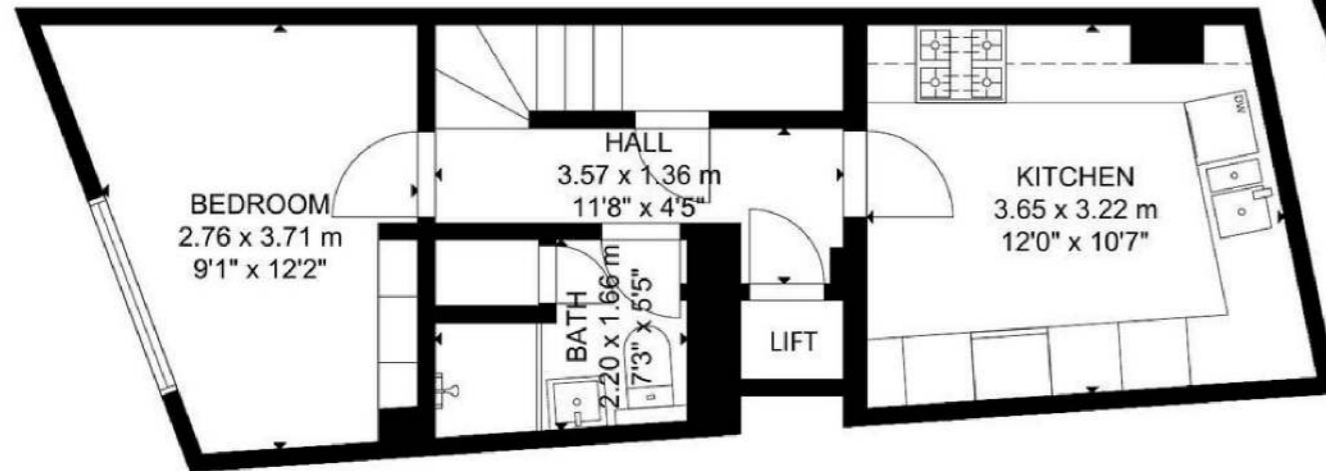




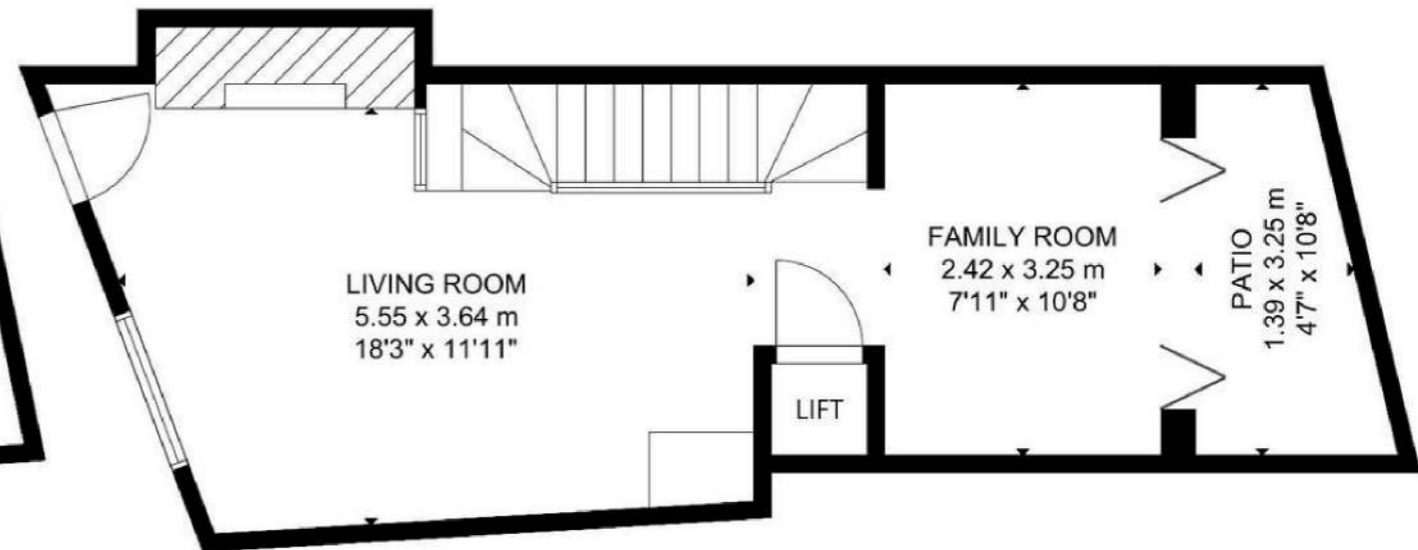
FIRST FLOOR



SECOND FLOOR



BASEMENT

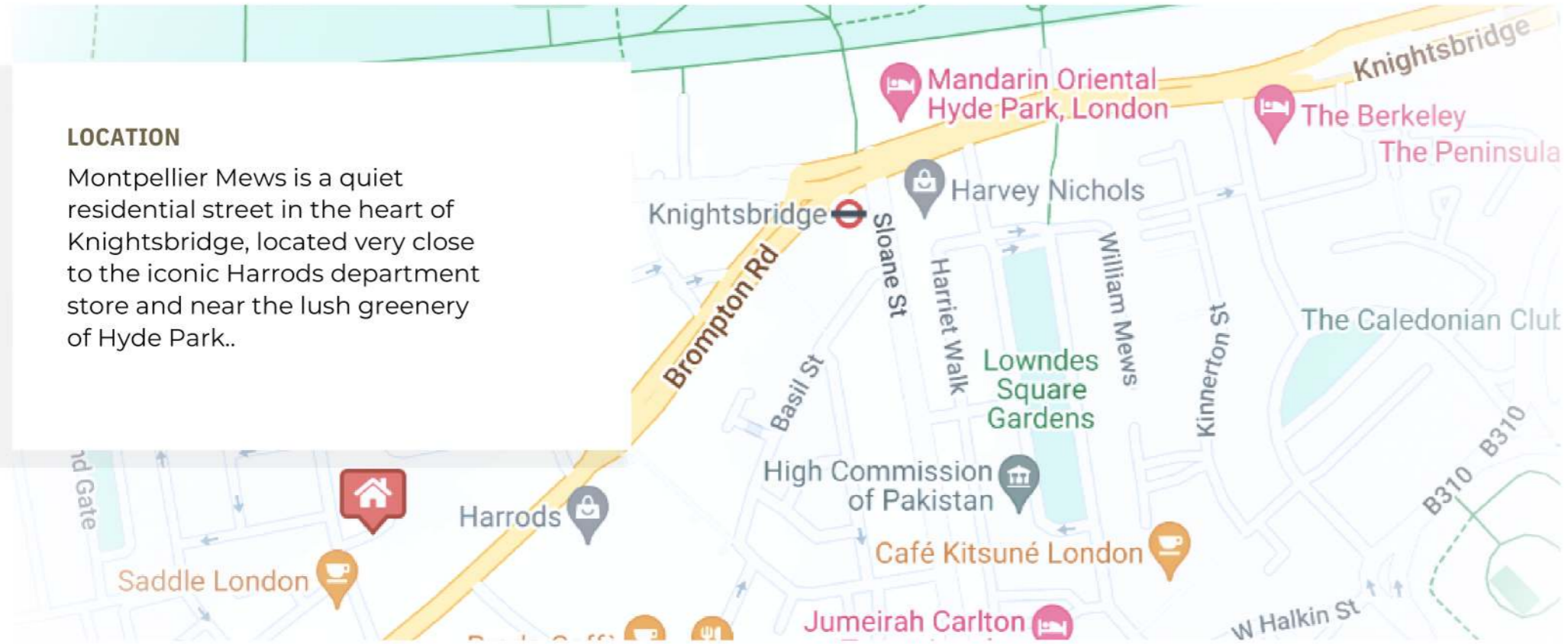


GROUND FLOOR

GROSS INTERNAL AREA  
 TOTAL: 131 m<sup>2</sup>/1,401 sq ft  
 BASEMENT: 35 m<sup>2</sup>/372 sq ft, GROUND FLOOR: 34 m<sup>2</sup>/361 sq ft  
 FIRST FLOOR: 32 m<sup>2</sup>/345 sq ft, SECOND FLOOR: 30 m<sup>2</sup>/323 sq ft  
 EXCLUDED AREA: PATIO: 5 m<sup>2</sup>/49 sq ft  
 SIZE AND DIMENSIONS ARE APPROXIMATE, ACTUAL MAY VARY.

**LOCATION**

Montpellier Mews is a quiet residential street in the heart of Knightsbridge, located very close to the iconic Harrods department store and near the lush greenery of Hyde Park..



Local Authority: City of Westminster  
Conservation Area: Knightsbridge

Council Tax: Band H  
Tenure: Freehold

**EPC:**





---

FOR ENQUIRIES PLEASE CONTACT:

Q INVESTMENTS INTERNATIONAL LTD

T: +44 79 854 87333

E: [OFFICE@QINVESTMENTS.LONDON](mailto:OFFICE@QINVESTMENTS.LONDON)

W: [QINVESTMENTS.LONDON](http://QINVESTMENTS.LONDON)

Viewing by appointment only

---

**DISCLAIMER:**

The information provided in this document has been obtained from the owner of the property and other external sources, and Representative does not take any responsibility for its accuracy or completeness. The details are given without any guarantee, and any intending Purchasers or Third Party should not rely on them as statements or representations of fact, but must satisfy themselves by inspection or otherwise as to the correctness of each of them.

No person employed or engaged by Representative has any authority to make any representation or warranty whatsoever in relation to this property.

This disclaimer is provided as a general outline for the guidance of intending Purchasers. The particulars do not constitute any part of an offer or contract. Representative accepts no responsibility for the information contained herein, and any intending Purchasers or Third Party should not rely on them as statements or representations of fact.





