



Mid Elm Cottage, Elm Road, Penn, High Wycombe, Buckinghamshire, HP10 8LF

Asking Price | £1,800

Property Features

- Three Bedroom Cottage
- Sought After Location
- Overlooking Widmer Pond
- Rear Garden
- Within Walking Distance of a Café and Restaurant
- Living Area with Open Fire
- Storage Garage in Garden
- Unfurnished
- Available 7th February

Full Description

An opportunity to rent a three-bedroom Cottage which overlooks Widmer Pond. Occupying an enviable position overlooking the waterfront, this delightful property is within walking distance of the popular Red Lion Pub, the cozy JJ's Café, and a handy convenience store.

The property features three bedrooms, a living area with an open-fire fireplace that adds to the homely atmosphere, kitchen that overlooks the rear of the property and bathroom.

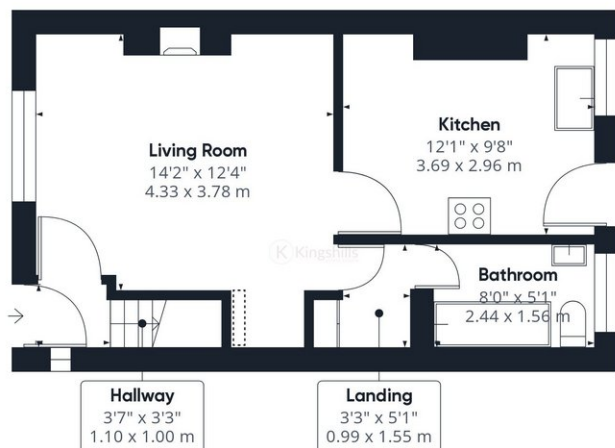
At the rear of the Cottage is a delightful garden that backs on to Penn and Tylers Green football playing fields, offering a peaceful setting. The garden is ideal for al fresco dining, providing outdoor seating and plenty of space to unwind in.

Furthermore, the location of the Cottage offers easy access to nearby towns and activities. High Wycombe and Beaconsfield are excellent spots for shopping, dining, and entertainment. Both towns offer train stations that are convenient for getting into London.

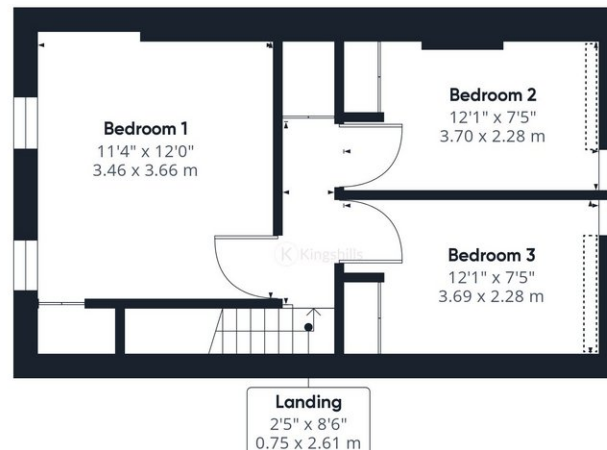
In conclusion, this delightful Cottage in Penn offers tenants a comfortable, relaxing stay, in a peaceful setting with breathtaking views of Widmer Pond. The location of the Cottage is perfect for exploring the local area and taking in nearby attractions. It is a perfect retreat from the hustle and bustle of everyday life, suitable for families or friends traveling in groups.







Ground Floor



Floor 1

Approximate total area^m

742.24 ft²
68.96 m²

Reduced headroom

8.7 ft²
0.81 m²

(1) Excluding balconies and terraces

Reduced headroom
(below 1.5m/4.92ft)

While every attempt has been made to ensure accuracy, all measurements are approximate, not to scale. This floor plan is for illustrative purposes only.

GIRAFFE360